



ព្រះរាជាណាចក្រកម្ពុជា
ជាតិ សាសនា ព្រះមហាក្សត្រ

រាជរដ្ឋាភិបាលកម្ពុជា

លេខ : ...៤៦... អនក្រ.បក

អនុក្រឹត្យ
ស្តីពី

ការកំណត់និយាមកាផ្ទៃបឹងទន្លេបាទី ទុកជាសម្បត្តិសាធារណៈរបស់រដ្ឋ និងការធ្វើ
អនុបយោគពីសម្បត្តិសាធារណៈរបស់រដ្ឋ មកជាសម្បត្តិឯកជនរបស់រដ្ឋនូវផ្ទៃដីស្ថិតក្នុង
ភូមិសាស្ត្រស្រុកបាទី ខេត្តតាកែវ និងស្រុកកណ្តាលស្ទឹង ខេត្តកណ្តាល

រាជរដ្ឋាភិបាល

- បានឃើញរដ្ឋធម្មនុញ្ញនៃព្រះរាជាណាចក្រកម្ពុជា
- បានឃើញព្រះរាជក្រឹត្យលេខ នស/រកត/០៩១៨/៩២៥ ចុះថ្ងៃទី ០៦ ខែកញ្ញា ឆ្នាំ ២០១៨ ស្តីពីការតែងតាំងរាជរដ្ឋាភិបាលនៃព្រះរាជាណាចក្រកម្ពុជា
- បានឃើញព្រះរាជក្រឹត្យលេខ នស/រកត/០៣២០/៤២១ ចុះថ្ងៃទី ៣០ ខែមីនា ឆ្នាំ ២០២០ ស្តីពីការតែងតាំង និងកែសម្រួលសមាសភាពរាជរដ្ឋាភិបាលនៃព្រះរាជាណាចក្រកម្ពុជា
- បានឃើញព្រះរាជក្រមលេខ នស/រកម/០៦១៨/០១២ ចុះថ្ងៃទី ២៨ ខែមិថុនា ឆ្នាំ ២០១៨ ដែលប្រកាសឱ្យប្រើច្បាប់ស្តីពីការរៀបចំនិងការប្រព្រឹត្តទៅនៃគណៈរដ្ឋមន្ត្រី
- បានឃើញព្រះរាជក្រមលេខ នស/រកម/០៦៩៩/០៩ ចុះថ្ងៃទី ២៣ ខែមិថុនា ឆ្នាំ ១៩៩៩ ដែលប្រកាសឱ្យប្រើច្បាប់ស្តីពីការបង្កើតក្រសួងរៀបចំដែនដី នគរូបនីយកម្ម និងសំណង់
- បានឃើញព្រះរាជក្រមលេខ នស/រកម/០៨០១/១៤ ចុះថ្ងៃទី ៣០ ខែសីហា ឆ្នាំ ២០០១ ដែលប្រកាសឱ្យប្រើច្បាប់កូមិបាល
- បានឃើញព្រះរាជក្រឹត្យលេខ នស/រកត/០៨០៦/៣៣៦ ចុះថ្ងៃទី ០៣ ខែសីហា ឆ្នាំ ២០០៦ ស្តីពីគោលការណ៍ និងបញ្ញត្តិអន្តរកាលនៃការធ្វើអនុបយោគទ្រព្យសម្បត្តិសាធារណៈរបស់រដ្ឋ និងរបស់នីតិបុគ្គលសាធារណៈ
- បានឃើញអនុក្រឹត្យលេខ ១២៩ អនក្រ.បក ចុះថ្ងៃទី ២៧ ខែវិច្ឆិកា ឆ្នាំ ២០០៦ ស្តីពីវិធាន និងនីតិវិធីនៃការធ្វើអនុបយោគទ្រព្យសម្បត្តិសាធារណៈរបស់រដ្ឋ និងនីតិបុគ្គលសាធារណៈ
- យោងតាមសំណើរបស់ក្រសួងរៀបចំដែនដី នគរូបនីយកម្ម និងសំណង់

សម្រេច

មាត្រា ១ .-

កំណត់និយាមកាផ្ទៃបឹងទន្លេបាទីទុកជាសម្បត្តិសាធារណៈរបស់រដ្ឋ ទំហំ ៩៧ហិកតា ១៩អា និង ១៩សង់ទីអា ក្នុងនោះផ្ទៃបឹងទំហំ ៥៧ហិកតា ៧៥អា និង ៦៩សង់ទីអា ស្ថិតក្នុងភូមិសាស្ត្រស្រុកបាទី ខេត្តតាកែវ ចុះបញ្ជីជូនរដ្ឋបាលខេត្តតាកែវ និងផ្ទៃបឹងទំហំ ៣៩ហិកតា ៤៣អា និង ៥០សង់ទីអា ស្ថិតក្នុងភូមិសាស្ត្រស្រុកកណ្តាលស្ទឹង ខេត្តកណ្តាល ចុះបញ្ជីជូនរដ្ឋបាលខេត្តកណ្តាល តាមប្រព័ន្ធកូអរដោណេ Project UTM Zone 48N Datum WGS 1984 ដូចមានផែនទីនិងតារាងនិយាមកាភ្ជាប់ជាឧបសម្ព័ន្ធទី ១ នៃអនុក្រឹត្យនេះ។

មាត្រា ២ .-

ធ្វើអនុបយោគពីសម្បត្តិសាធារណៈរបស់រដ្ឋមកជាសម្បត្តិឯកជនរបស់រដ្ឋនូវផ្ទៃដីស្ថិតក្នុងភូមិសាស្ត្រ ស្រុកបាទី ខេត្តតាកែវ និងស្រុកកណ្តាលស្ទឹង ខេត្តកណ្តាល តាមប្រព័ន្ធកូអរដោណេ Project UTM Zone 48N Datum WGS 1984 ចំនួន ២ ទីតាំងដូចខាងក្រោម៖

១. ធ្វើអនុបយោគជាសម្បត្តិឯកជនរបស់រដ្ឋនូវផ្ទៃដីទំហំ ២២២ហិកតា ៦៣អា និង ៧៧សង់ទីអា នៅសល់ពីផ្ទៃបឹងទន្លេបាទីដែលរក្សាទុក ក្នុងនោះផ្ទៃដីទំហំ ១១៦ហិកតា ៣៥អា និង ៣៤សង់ទីអា ស្ថិតនៅភូមិទន្លេបាទី ឃុំក្រាំងធ្នង់ ស្រុកបាទី ខេត្តតាកែវ ចុះបញ្ជីជូនរដ្ឋបាលខេត្តតាកែវ និងផ្ទៃដី ទំហំ ១០៦ហិកតា ២៨អា និង ៤៣សង់ទីអា ស្ថិតនៅឃុំព្រែករកា និងឃុំទ្រា ស្រុកកណ្តាលស្ទឹង ខេត្តកណ្តាល ចុះបញ្ជីជូនរដ្ឋបាលខេត្តកណ្តាល ដូចមានផែនទី និងតារាងនិយាមកាភ្ជាប់ជា ឧបសម្ព័ន្ធទី ១ នៃអនុក្រឹត្យនេះ។
២. ធ្វើអនុបយោគជាសម្បត្តិឯកជនរបស់រដ្ឋនូវផ្ទៃដីទំហំ ៤៦ហិកតា ២៨អា និង ៦៦សង់ទីអា ស្ថិតនៅ ឃុំទ្រា ស្រុកកណ្តាលស្ទឹង ខេត្តកណ្តាល ដែលបានចុះបញ្ជីជូនរដ្ឋបាលខេត្តកណ្តាល មានចំនួន ៤បណ្ណ រួមមានវិញ្ញាបនបត្រសម្គាល់ម្ចាស់អចលនវត្ថុលេខ ០៨០១២៨០៥-០៤៧៥, លេខ ០៨០១២៨០៣-០៦២៧, លេខ ០៨០១២៨០៤-០៥០៦ និងលេខ០៨០១២៨០១-១១៤៥ ចុះថ្ងៃទី១៨ ខែវិច្ឆិកា ឆ្នាំ២០០៩ ដូចមានផែនទី និងតារាងនិយាមកាភ្ជាប់ជាឧបសម្ព័ន្ធទី ២ នៃ អនុក្រឹត្យនេះ។

មាត្រា ៣ .-

បទប្បញ្ញត្តិទាំងឡាយណាដែលផ្ទុយនឹងអនុក្រឹត្យនេះ ត្រូវទុកជានិរាករណ៍។

មាត្រា ៤ .-

រដ្ឋមន្ត្រីទទួលបន្ទុកទីស្តីការគណៈរដ្ឋមន្ត្រី រដ្ឋមន្ត្រីក្រសួងសេដ្ឋកិច្ច និងហិរញ្ញវត្ថុ រដ្ឋមន្ត្រីក្រសួងរៀបចំដែនដី នគរូបនីយកម្ម និងសំណង់ រដ្ឋមន្ត្រីក្រសួងមហាផ្ទៃ រដ្ឋមន្ត្រីក្រសួងធនធានទឹក និងឧតុនិយម រដ្ឋមន្ត្រីគ្រប់ក្រសួង និងប្រធានគ្រប់ស្ថាប័នដែលពាក់ព័ន្ធ និងអភិបាលនៃគណៈអភិបាលខេត្តតាកែវ និងខេត្តកណ្តាល ត្រូវទទួល បន្ទុកអនុវត្តអនុក្រឹត្យនេះតាមភារកិច្ចរៀងៗខ្លួន ចាប់ពីថ្ងៃចុះហត្ថលេខាតទៅ។

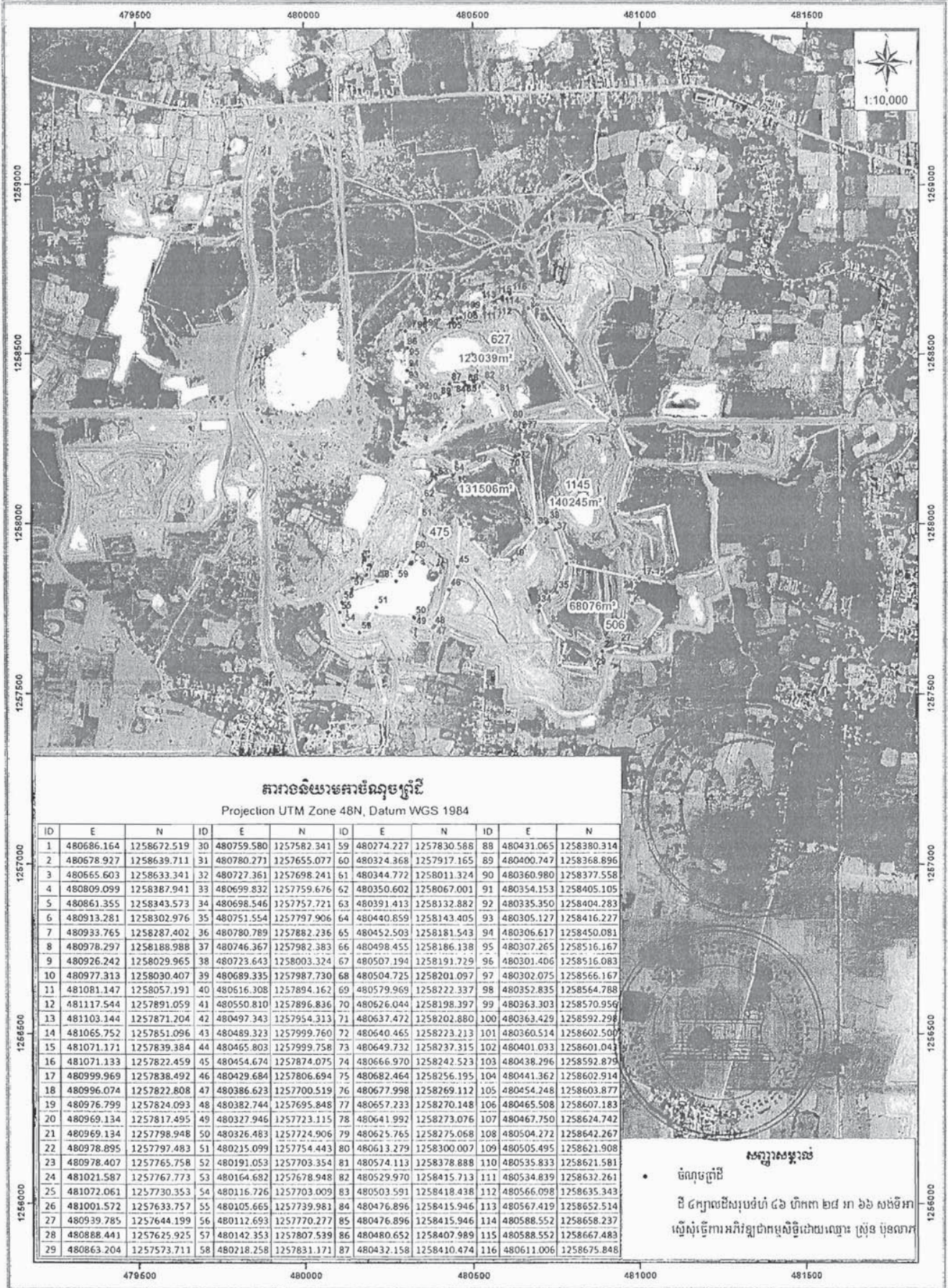
ថ្ងៃពុធ ១៤ ខែ មេសា ឆ្នាំ ឆ្លូវ ត្រីស័ក ព.ស.២៥៦៥
ធ្វើនៅរាជធានីភ្នំពេញ ថ្ងៃទី ១៣ ខែ មេសា ឆ្នាំ ២០២២



សម្តេចអគ្គមហាសេនាបតីតេជោ ហ៊ុន សែន

- កន្លែងទទួល:**
- ក្រសួងព្រះបរមរាជវាំង
 - អគ្គលេខាធិការដ្ឋានក្រុមប្រឹក្សាធម្មនុញ្ញ
 - អគ្គលេខាធិការដ្ឋានព្រឹទ្ធសភា
 - អគ្គលេខាធិការដ្ឋានរដ្ឋសភា
 - ឧទ្ធរណ៍យសម្តេចអគ្គមហាសេនាបតីតេជោនាយករដ្ឋមន្ត្រី
 - ឧទ្ធរណ៍យសម្តេច ឯកឧត្តម លោកជំទាវ ឧបនាយករដ្ឋមន្ត្រី
 - ដូចមាត្រា ៤
 - រាជកិច្ច
 - ឯកសារ កាលប្បវត្តិ

**ផែនទីបង្ហាញពីការចែងទំហំដីសម្រាប់ ឃុំកោះ ២៨ អា ៦៦ សង្កាត់អា ស្ថិតនៅឃុំទ្រូង ស្រុកអណ្តូងស្នួល ខេត្តកណ្តាល
ស្នើសុំធ្វើការអភិវឌ្ឍជាកម្មសិទ្ធិដីដោយឈ្មោះ ស្រ្តីន ម៉ីនលាត**



តារាងទំហំដីសម្រាប់ប្រតិបត្តិ
Projection UTM Zone 48N, Datum WGS 1984

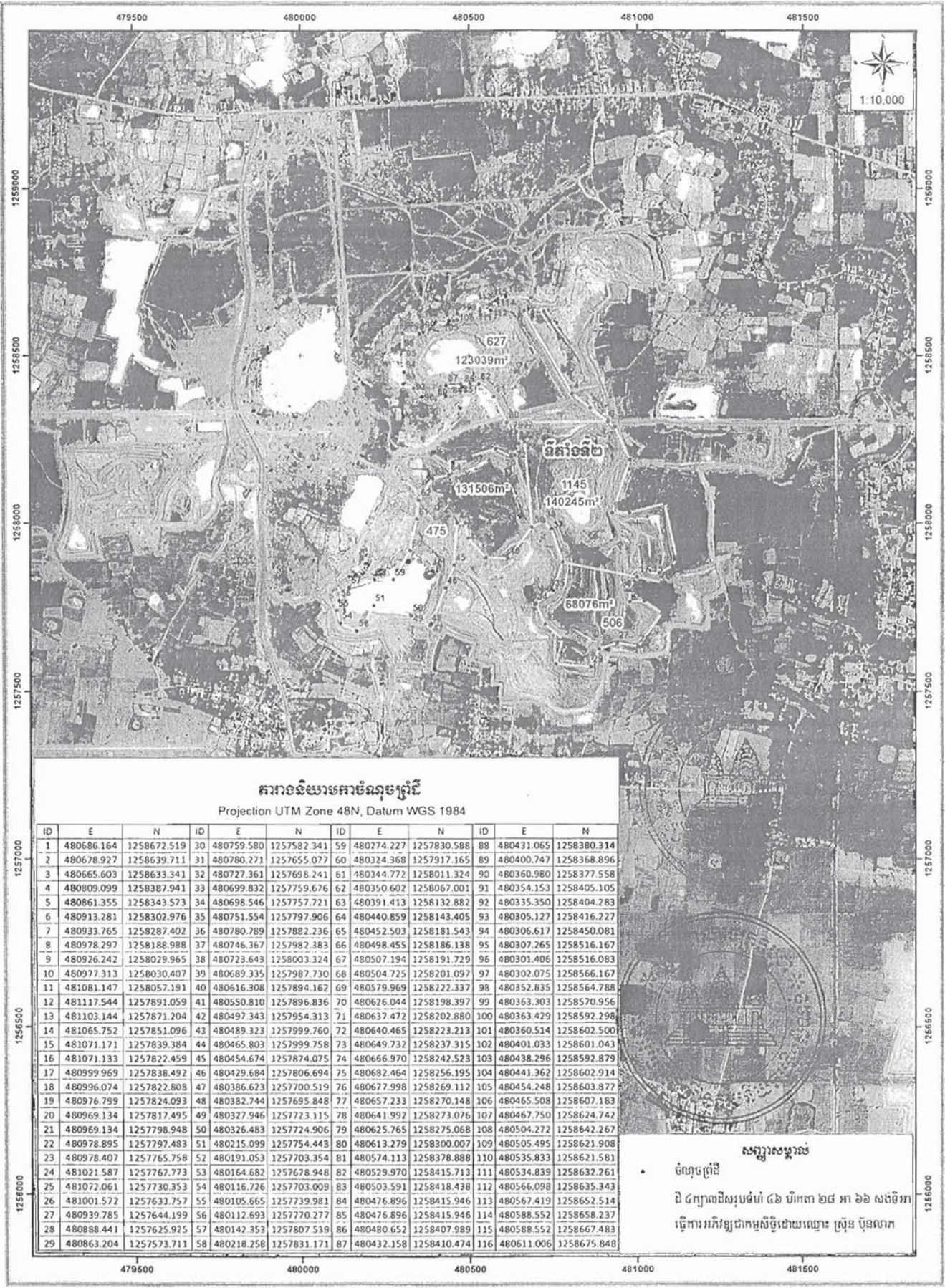
ID	E	N	ID	E	N	ID	E	N	ID	E	N
1	480686.164	1258672.519	30	480759.580	1257582.341	59	480274.227	1257830.588	88	480431.065	1258380.314
2	480678.927	1258639.711	31	480780.271	1257655.077	60	480324.368	1257917.165	89	480400.747	1258368.896
3	480665.603	1258633.341	32	480727.361	1257698.241	61	480344.772	1258011.324	90	480360.980	1258377.558
4	480809.099	1258387.941	33	480699.832	1257759.676	62	480350.602	1258067.001	91	480354.153	1258405.105
5	480861.355	1258343.573	34	480698.546	1257757.721	63	480391.413	1258132.882	92	480335.350	1258404.283
6	480913.281	1258302.976	35	480751.554	1257797.906	64	480440.859	1258143.405	93	480305.127	1258416.227
7	480933.765	1258287.402	36	480780.789	1257882.236	65	480452.503	1258181.543	94	480306.617	1258450.081
8	480978.297	1258188.988	37	480746.367	1257982.383	66	480498.455	1258186.138	95	480307.265	1258516.167
9	480926.242	1258029.965	38	480723.643	1258003.324	67	480507.194	1258191.729	96	480301.406	1258516.083
10	480977.313	1258030.407	39	480689.335	1257987.730	68	480504.725	1258201.097	97	480302.075	1258566.167
11	481081.147	1258057.191	40	480616.308	1257894.162	69	480579.969	1258222.337	98	480352.835	1258564.788
12	481117.544	1257891.059	41	480550.810	1257896.836	70	480626.044	1258198.397	99	480363.303	1258750.956
13	481103.144	1257871.204	42	480497.343	1257954.313	71	480637.472	1258202.880	100	480363.429	1258592.298
14	481065.752	1257851.096	43	480489.323	1257999.760	72	480640.465	1258223.213	101	480360.514	1258602.507
15	481071.171	1257839.384	44	480465.803	1257999.758	73	480649.732	1258237.315	102	480401.033	1258601.043
16	481071.133	1257822.459	45	480454.674	1257874.075	74	480666.970	1258242.523	103	480438.296	1258592.879
17	480999.969	1257838.492	46	480429.684	1257806.694	75	480682.464	1258256.195	104	480441.362	1258602.914
18	480996.074	1257822.808	47	480386.623	1257700.519	76	480677.998	1258269.112	105	480454.248	1258603.877
19	480976.799	1257824.093	48	480382.744	1257695.848	77	480657.233	1258270.148	106	480465.508	1258607.183
20	480969.134	1257817.495	49	480327.946	1257723.115	78	480641.992	1258273.076	107	480467.750	1258624.742
21	480969.134	1257798.948	50	480326.483	1257724.906	79	480625.765	1258275.068	108	480504.272	1258642.267
22	480978.895	1257797.483	51	480215.099	1257754.443	80	480613.279	1258300.007	109	480505.495	1258621.908
23	480978.407	1257765.758	52	480191.053	1257703.354	81	480574.113	1258378.888	110	480535.833	1258621.581
24	481021.587	1257767.773	53	480164.682	1257678.948	82	480529.970	1258415.713	111	480534.839	1258632.261
25	481072.061	1257730.353	54	480116.726	1257703.009	83	480503.591	1258418.438	112	480566.098	1258635.343
26	481001.572	1257633.757	55	480105.665	1257739.981	84	480476.896	1258415.946	113	480567.419	1258652.514
27	480939.785	1257644.199	56	480112.693	1257770.277	85	480476.896	1258415.946	114	480588.552	1258658.237
28	480888.441	1257625.925	57	480142.353	1257807.539	86	480480.652	1258407.989	115	480588.552	1258667.483
29	480863.204	1257573.711	58	480218.258	1257831.171	87	480432.158	1258410.474	116	480611.006	1258675.848

សញ្ញាសម្រាប់

- ចំណុចប្រតិបត្តិ

ដី ៤៧១៧៧ម^២សរុបទំហំ ៤៦ ហិកតា ២៨ អា ៦៦ សង្កាត់អា ស្ថិតនៅឃុំទ្រូង ស្រុកអណ្តូងស្នួល ខេត្តកណ្តាល

ផែនទីនិងការវាស់វែងប្រកបដោយសុវត្ថិភាពនៃអង្គការស្រុកស្រែចម្ការស្រះស្រែចម្ការ...២...ទំព័រ...ឆ្នាំ២០២២



តារាងទិន្នន័យអ័ណូមេត្រីក

Projection UTM Zone 48N, Datum WGS 1984

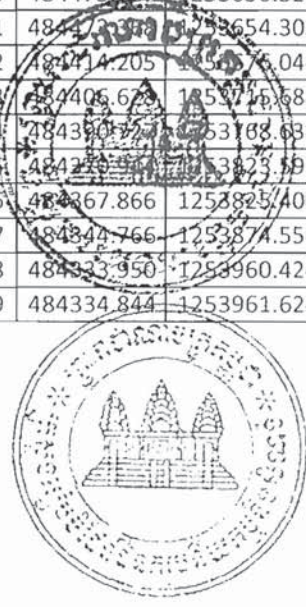
ID	E	N	ID	E	N	ID	E	N	ID	E	N
1	480686.164	1258672.519	30	480759.580	1257582.341	59	480274.227	1257830.588	88	480431.065	1258380.314
2	480678.927	1258639.711	31	480780.271	1257655.077	60	480324.368	1257917.165	89	480400.747	1258368.896
3	480665.603	1258633.341	32	480727.361	1257698.241	61	480344.772	1258011.324	90	480360.980	1258377.558
4	480809.099	1258387.941	33	480699.832	1257759.676	62	480350.602	1258067.001	91	480354.153	1258405.105
5	480861.355	1258343.573	34	480698.546	1257757.721	63	480391.413	1258132.882	92	480335.350	1258404.283
6	480913.281	1258302.976	35	480751.554	1257797.906	64	480440.859	1258143.405	93	480305.127	1258416.227
7	480933.765	1258287.402	36	480780.789	1257882.236	65	480452.503	1258181.543	94	480306.617	1258450.081
8	480978.297	1258188.988	37	480746.367	1257982.383	66	480498.455	1258186.138	95	480307.265	1258516.167
9	480926.242	1258029.965	38	480723.643	1258003.324	67	480507.194	1258191.729	96	480301.406	1258516.083
10	480977.313	1258030.407	39	480689.335	1257987.730	68	480504.725	1258201.097	97	480302.075	1258566.167
11	481081.147	1258057.191	40	480616.308	1257894.162	69	480579.969	1258222.337	98	480352.835	1258564.788
12	481117.544	1257891.059	41	480550.810	1257896.836	70	480626.044	1258198.397	99	480363.303	1258570.956
13	481103.144	1257871.204	42	480497.343	1257954.313	71	480637.472	1258202.880	100	480363.429	1258592.298
14	481065.752	1257851.096	43	480489.323	1257999.760	72	480640.465	1258223.213	101	480360.514	1258602.500
15	481071.171	1257839.384	44	480465.803	1257999.758	73	480649.732	1258237.315	102	480401.033	1258601.043
16	481071.133	1257822.459	45	480454.674	1257874.075	74	480666.970	1258242.523	103	480438.296	1258592.879
17	480999.969	1257838.492	46	480429.684	1257806.694	75	480682.464	1258256.195	104	480441.362	1258602.914
18	480996.074	1257822.808	47	480386.623	1257700.519	76	480677.998	1258269.117	105	480454.248	1258603.877
19	480976.999	1257824.093	48	480382.744	1257695.848	77	480657.233	1258270.148	106	480465.508	1258607.183
20	480969.134	1257817.495	49	480327.946	1257723.115	78	480641.992	1258273.076	107	480467.750	1258624.742
21	480969.134	1257798.948	50	480326.483	1257724.906	79	480625.765	1258275.068	108	480504.272	1258642.267
22	480978.895	1257797.483	51	480215.099	1257754.443	80	480613.279	1258300.007	109	480505.495	1258621.908
23	480978.407	1257765.758	52	480191.053	1257703.354	81	480574.113	1258378.888	110	480535.833	1258621.581
24	481021.587	1257767.773	53	480164.682	1257678.948	82	480529.970	1258415.713	111	480534.839	1258632.261
25	481072.061	1257730.353	54	480116.726	1257703.009	83	480503.591	1258418.438	112	480566.098	1258635.343
26	481001.572	1257633.757	55	480105.665	1257739.981	84	480476.896	1258415.946	113	480567.419	1258652.514
27	480939.785	1257644.199	56	480112.693	1257770.277	85	480476.896	1258415.946	114	480588.552	1258658.237
28	480888.441	1257625.925	57	480142.353	1257807.539	86	480480.652	1258407.989	115	480588.552	1258667.483
29	480863.204	1257573.711	58	480218.258	1257831.171	87	480432.158	1258410.474	116	480611.006	1258675.848

សញ្ញាសម្គាល់
 • ចំណុចព្រំដី
 ដី ៤ក្បាលដីសរុបដំបៅ ៤៦ ហិកតា ២៨ អា ៦៦ សង់ដី អា
 ធ្វើការអភិវឌ្ឍជាអម្បិលដោយឈ្មោះ ស្រ៊ុន ប៉ុនលាក

ការពិនិត្យយោងការបំពេញត្រួតពិនិត្យ ទីតាំងទីតាំង ក្នុងតំបន់បឹងទន្លេសាប ស្ថិតនៅឃុំទ្រូង ឃុំព្រែកកោះ ស្រុកកណ្តាលស្ទឹង ខេត្តកណ្តាល ស្នើសុំធ្វើការអភិវឌ្ឍន៍ស្ថិតិស្ថានភាពដោយឈ្មោះ ស្រ្តីន ប៊ុនលាត

Projection UTM Zone 48N, Datum WGS 1984								
ID	E	N	ID	E	N	ID	E	N
1	480493.752	1254316.178	46	482035.694	1254215.695	91	482152.904	1253920.074
2	480494.356	1254301.141	47	482080.477	1254197.664	92	482100.225	1253912.460
3	480492.428	1254281.782	48	482111.508	1254177.212	93	482055.515	1253909.257
4	480497.191	1254259.557	49	482139.150	1254145.027	94	482016.647	1253908.865
5	480494.280	1254218.017	50	482148.298	1254138.624	95	481977.035	1253910.663
6	480503.012	1254209.550	51	482191.302	1254120.979	96	481923.025	1253916.863
7	480525.237	1254211.932	52	482325.557	1254113.238	97	481884.574	1253923.932
8	480571.862	1254227.896	53	482418.425	1254116.035	98	481844.459	1253933.719
9	480594.029	1254225.955	54	482500.955	1254154.445	99	481804.968	1253945.872
10	480628.689	1254211.403	55	482540.800	1254180.420	100	481770.458	1253958.821
11	480646.152	1254215.107	56	482558.201	1254189.637	101	481739.596	1253972.008
12	480677.751	1254249.719	57	482576.691	1254195.457	102	481690.948	1253983.834
13	480689.829	1254249.216	58	482598.288	1254199.374	103	481529.021	1254102.028
14	480822.686	1254162.154	59	482622.459	1254197.688	104	481326.118	1254176.011
15	480874.987	1254168.540	60	482655.853	1254189.264	105	481258.439	1254180.463
16	480850.752	1254178.807	61	482684.691	1254176.701	106	480958.701	1254325.944
17	480838.998	1254194.878	62	482742.559	1254173.419	107	480936.559	1254332.148
18	480831.504	1254211.101	63	482795.093	1254179.144	108	480919.769	1254333.913
19	480827.855	1254225.450	64	482872.540	1254184.858	109	480905.785	1254332.908
20	480826.451	1254241.601	65	482935.290	1254180.559	110	480893.690	1254330.464
21	480827.360	1254255.216	66	482957.034	1254174.506	111	480877.305	1254324.117
22	480829.417	1254265.002	67	483021.912	1254137.770	112	480867.175	1254318.090
23	480501.601	1254324.906	68	483048.430	1254118.177	113	480855.709	1254309.096
24	480496.496	1254358.702	69	483074.861	1254102.318	114	480844.058	1254295.943
25	480469.874	1254382.890	70	483114.471	1254072.856	115	480835.107	1254280.819
26	480471.946	1254391.034	71	483135.171	1254061.014	116	484346.308	1253976.997
27	480714.972	1254339.421	72	483091.175	1254052.038	117	484369.434	1254008.012
28	480716.492	1254356.292	73	483052.180	1254046.937	118	484371.335	1254019.074
29	480793.435	1254340.034	74	483019.010	1254044.678	119	484340.394	1254029.510
30	480816.847	1254516.352	75	482964.126	1254044.216	120	483360.813	1254021.987
31	480830.733	1254560.651	76	482919.180	1254045.454	121	483342.696	1254119.214
32	480847.096	1254573.638	77	482873.129	1254045.735	122	483321.761	1254127.031
33	480866.175	1254577.340	78	482829.451	1254045.090	123	483297.431	1254117.852
34	480889.605	1254575.387	79	482787.329	1254043.615	124	483299.640	1254102.314
35	480905.441	1254570.108	80	482744.170	1254041.228	125	483277.581	1254076.975
36	481126.761	1254394.015	81	482694.689	1254037.427	126	483252.527	1254230.181
37	481316.093	1254339.405	82	482657.390	1254033.746	127	483242.799	1254304.302
38	481377.880	1254338.295	83	482630.671	1254030.685	128	483237.180	1254313.217
39	481665.072	1254383.221	84	482579.321	1254023.879	129	483211.500	1254329.421
40	481707.884	1254365.135	85	482534.171	1254016.845	130	483202.260	1254388.421
41	481768.012	1254328.083	86	482471.543	1254005.315	131	483187.852	1254380.415
42	481879.006	1254225.914	87	482430.219	1253996.659	132	483162.733	1254391.441
43	481903.318	1254213.758	88	482295.753	1253962.501	133	483144.244	1254461.679
44	481932.399	1254210.768	89	482251.910	1253945.839	134	483165.743	1254482.925
45	481989.423	1254217.488	90	482199.502	1253930.289	135	483195.331	1254496.174

ID	E	N	ID	E	N	ID	E	N
136	483543.067	1254509.110	175	483321.701	1254051.505	214	483891.332	1254090.647
137	483482.538	1254519.926	176	483327.300	1254043.847	215	483910.909	1254075.529
138	483424.361	1254527.791	177	483335.646	1254036.166	216	483925.209	1254062.785
139	483291.645	1254575.549	178	483345.386	1254030.352	217	483939.839	1254047.852
140	483274.360	1254588.421	179	483356.120	1254026.646	218	483952.275	1254033.373
141	483230.732	1254616.072	180	483364.791	1254025.403	219	483965.062	1254016.157
142	483166.424	1254701.914	181	483374.982	1254025.627	220	483976.682	1253998.001
143	483142.542	1254720.127	182	483386.671	1254028.279	221	483985.834	1253981.308
144	483119.759	1254729.648	183	483398.605	1254034.003	222	483993.382	1253965.195
145	483102.112	1254733.976	184	483408.956	1254042.578	223	483999.259	1253950.603
146	483077.274	1254735.168	185	483417.977	1254050.537	224	484006.275	1253929.327
147	483027.714	1254730.827	186	483428.150	1254058.989	225	484011.312	1253909.340
148	482977.716	1254722.676	187	483436.647	1254065.509	226	484015.746	1253883.218
149	482955.766	1254716.220	188	483447.078	1254073.191	227	484017.825	1253857.643
150	482944.717	1254700.860	189	483458.310	1254080.972	228	484018.066	1253844.178
151	482931.213	1254670.296	190	483469.515	1254088.031	229	484016.194	1253812.835
152	482891.733	1254499.125	191	483480.890	1254094.763	230	484012.560	1253789.415
153	482897.208	1254485.575	192	483491.914	1254100.904	231	484009.164	1253774.079
154	482917.235	1254472.588	193	483502.365	1254106.243	232	484006.070	1253762.641
155	482945.275	1254457.166	194	483512.549	1254111.122	233	484002.226	1253750.166
156	482965.056	1254446.472	195	483523.721	1254116.158	234	484167.749	1253697.114
157	483008.656	1254427.221	196	483538.036	1254121.942	235	484241.833	1253662.718
158	483014.333	1254423.468	197	483556.705	1254128.644	236	484318.310	1253641.209
159	483052.732	1254387.772	198	483573.563	1254133.821	237	484405.875	1253625.676
160	483071.985	1254365.651	199	483599.931	1254140.284	238	484460.456	1253620.930
161	483076.982	1254347.226	200	483623.776	1254144.748	239	484467.275	1253633.830
162	483174.018	1254346.913	201	483648.099	1254147.654	240	484473.207	1253650.328
163	483194.725	1254334.829	202	483666.360	1254148.948	241	484473.371	1253654.303
164	483215.965	1254315.712	203	483688.177	1254149.495	242	484474.205	1253676.044
165	483240.962	1254284.652	204	483704.332	1254149.105	243	484406.671	1253715.688
166	483240.192	1254255.411	205	483723.591	1254147.759	244	484390.771	1253768.688
167	483245.348	1254257.276	206	483742.575	1254145.575	245	484390.771	1253768.688
168	483252.065	1254258.473	207	483755.086	1254143.734	246	484367.866	1253825.400
169	483265.477	1254257.418	208	483776.190	1254139.664	247	484344.766	1253874.556
170	483272.809	1254254.680	209	483793.908	1254135.660	248	484333.950	1253960.424
171	483280.500	1254249.994	210	483815.162	1254129.339	249	484334.844	1253961.624
172	483287.881	1254242.319	211	483837.925	1254120.638			
173	483290.948	1254238.580	212	483856.483	1254111.741			
174	483320.421	1254055.908	213	483875.995	1254100.711			



ការពិនិត្យយោងកាត់ដុចប្រើបីជាន់ឆ្នោតត្រូវគ្នាគ្នា ក្នុងតំបន់បីជាន់ឆ្នោត ស្ថិតនៅឃុំទ្រោ ឃុំទ្រោកកោ
ស្រុកកណ្តាលស្ទឹង ខេត្តកណ្តាល

Projection UTM Zone 48N, Datum WGS 1984								
ID	E	N	ID	E	N	ID	E	N
1	480914.542	1254173.370	46	482236.110	1253919.699	91	483330.101	1254015.813
2	480863.208	1254195.251	47	482264.148	1253928.992	92	483340.487	1254010.761
3	480860.107	1254199.126	48	482302.166	1253943.527	93	483346.705	1254008.548
4	480853.804	1254209.734	49	482340.101	1253954.133	94	483354.532	1254006.608
5	480849.555	1254220.588	50	482373.131	1253962.698	95	483362.415	1254005.529
6	480846.781	1254234.646	51	482401.806	1253969.660	96	483369.656	1254005.272
7	480846.463	1254245.282	52	482435.131	1253977.261	97	483377.019	1254005.727
8	480847.500	1254253.943	53	482472.137	1253985.039	98	483387.058	1254007.523
9	480849.218	1254261.384	54	482493.645	1253989.331	99	483396.032	1254010.317
10	480853.233	1254272.312	55	482523.975	1253994.789	100	483404.868	1254014.532
11	480858.294	1254281.194	56	482555.574	1254000.024	101	483411.455	1254018.608
12	480864.558	1254289.520	57	482594.291	1254005.793	102	483417.048	1254022.903
13	480870.962	1254295.806	58	482636.468	1254011.243	103	483422.199	1254027.588
14	480877.127	1254300.650	59	482676.657	1254015.620	104	483429.083	1254033.762
15	480888.652	1254307.270	60	482709.517	1254018.598	105	483435.937	1254039.576
16	480899.114	1254311.191	61	482746.703	1254021.350	106	483443.291	1254045.441
17	480911.570	1254313.498	62	482797.560	1254024.061	107	483450.149	1254050.650
18	480919.541	1254313.892	63	482845.881	1254025.522	108	483457.648	1254056.183
19	480928.246	1254313.201	64	482895.168	1254025.720	109	483465.891	1254061.893
20	480939.581	1254311.171	65	482931.867	1254025.176	110	483475.304	1254068.040
21	480948.148	1254308.517	66	482972.958	1254024.392	111	483483.882	1254073.444
22	480959.267	1254303.706	67	483003.667	1254024.229	112	483499.924	1254082.485
23	480972.849	1254297.232	68	483033.879	1254025.379	113	483521.278	1254093.123
24	480987.046	1254290.321	69	483058.838	1254027.567	114	483540.264	1254101.308
25	481002.053	1254283.017	70	483082.399	1254030.528	115	483564.710	1254110.186
26	481019.979	1254274.291	71	483114.406	1254035.915	116	483583.951	1254115.868
27	481052.106	1254258.653	72	483147.355	1254043.436	117	483598.330	1254119.477
28	481092.480	1254239.001	73	483169.027	1254049.356	118	483613.339	1254122.645
29	481205.599	1254183.940	74	483216.245	1254064.692	119	483627.551	1254125.739
30	481733.258	1253952.950	75	483235.878	1254091.742	120	483655.785	1254128.285
31	481783.438	1253932.380	76	483239.530	1254230.306	121	483674.332	1254129.486
32	481813.756	1253922.001	77	483243.637	1254234.431	122	483692.575	1254129.381
33	481843.266	1253913.250	78	483248.884	1254237.287	123	483710.145	1254128.697
34	481865.969	1253907.515	79	483253.893	1254238.484	124	483733.199	1254126.648
35	481893.632	1253901.655	80	483258.233	1254238.348	125	483754.277	1254123.529
36	481920.328	1253897.044	81	483265.652	1254235.900	126	483776.046	1254119.310
37	481948.315	1253893.303	82	483269.947	1254232.568	127	483793.330	1254115.186
38	481981.635	1253890.215	83	483272.063	1254230.068	128	483808.686	1254110.416
39	482017.091	1253888.855	84	483297.608	1254071.740	129	483821.264	1254105.875
40	482051.848	1253889.052	85	483300.872	1254051.507	130	483834.425	1254100.213
41	482088.652	1253891.315	86	483303.896	1254042.221	131	483847.155	1254094.049
42	482121.832	1253894.829	87	483307.477	1254036.633	132	483860.512	1254086.676
43	482151.904	1253899.557	88	483312.298	1254030.581	133	483872.995	1254078.888
44	482177.258	1253904.522	89	483317.715	1254025.056	134	483881.367	1254073.380
45	482201.466	1253910.158	90	483323.574	1254020.196	135	483896.300	1254061.681

ID	E	N	ID	E	N	ID	E	N
136	483909.102	1254050.463	145	483992.335	1253902.557	154	483569.789	1253871.740
137	483922.978	1254036.661	146	483996.731	1253873.592	155	483360.768	1253940.531
138	483934.820	1254023.239	147	483998.063	1253844.325	156	483025.234	1253906.717
139	483945.353	1254009.466	148	483996.317	1253815.080	157	482865.996	1253884.968
140	483953.444	1253997.632	149	483992.924	1253793.215	158	482487.641	1253800.302
141	483960.035	1253987.006	150	483987.978	1253771.958	159	481990.224	1253795.010
142	483971.770	1253964.472	151	483983.180	1253756.271	160	481884.390	1253842.635
143	483980.114	1253944.742	152	483961.373	1253763.260	161	481784.363	1253915.647
144	483987.063	1253923.765	153	483823.790	1253765.906			

ការវាស់វែងយោងតាមប្រព័ន្ធគ្រប់គ្រង ទីតាំងភព ក្នុងតំបន់បឹងទន្លេសាប ស្ថិតនៅឃុំក្រាំងឆ្នង់ ស្រុកឆាយ ខេត្តតាកែវ ស្នើសុំធ្វើការអភិបាលកិច្ចស្ថិតភពដោយឈ្មោះ ប្រសិន ប៊ុនលាត

Projection UTM Zone 48N, Datum WGS 1984

ID	E	N	ID	E	N	ID	E	N
1	484443.383	1253403.539	38	484541.979	1253599.696	75	484377.410	1253282.526
2	484487.493	1253430.261	39	484535.046	1253597.698	76	484375.195	1253277.775
3	484528.989	1253459.793	40	484527.899	1253595.752	77	484373.838	1253272.711
4	484473.005	1253474.565	41	484504.739	1253589.445	78	484373.490	1253266.058
5	484529.904	1253490.277	42	484501.212	1253588.656	79	484374.008	1253257.012
6	484575.039	1253506.304	43	484494.670	1253588.083	80	484380.100	1253150.625
7	484606.929	1253514.774	44	484487.711	1253588.692	81	483973.210	1253169.361
8	484635.984	1253539.313	45	484480.963	1253590.500	82	483953.046	1253274.973
9	484648.637	1253563.851	46	484474.519	1253593.531	83	483925.550	1253385.807
10	484656.508	1253597.306	47	484486.017	1253558.208	84	483921.942	1253390.711
11	484674.663	1253659.127	48	484481.105	1253503.395	85	483891.298	1253418.150
12	484686.674	1253739.802	49	484460.438	1253620.902	86	483872.703	1253423.635
13	484689.637	1253754.284	50	484451.623	1253602.038	87	483838.489	1253428.427
14	484684.659	1253778.585	51	484465.722	1253555.811	88	483767.776	1253431.626
15	484662.769	1253825.092	52	484461.506	1253509.723	89	483683.226	1253428.380
16	484660.801	1253833.130	53	483961.820	1253671.709	90	483666.922	1253429.215
17	484660.041	1253840.178	54	483980.520	1253701.200	91	483633.885	1253429.075
18	484660.242	1253847.629	55	483991.314	1253722.467	92	483639.243	1253557.505
19	484661.840	1253856.295	56	484002.226	1253750.166	93	483651.917	1253555.467
20	484664.848	1253864.778	57	484055.968	1253732.941	94	483669.734	1253583.446
21	484670.100	1253874.089	58	484167.817	1253697.082	95	483687.625	1253512.254
22	484681.701	1253890.350	59	484241.833	1253662.718	96	483703.582	1253511.895
23	484689.738	1253922.331	60	484326.499	1253638.905	97	483710.244	1253552.285
24	484698.249	1253947.432	61	484405.875	1253625.676	98	483741.360	1253553.676
25	484698.395	1253951.712	62	484453.915	1253480.722	99	483759.163	1253555.812
26	484661.145	1253955.249	63	484420.417	1253400.414	100	483776.848	1253558.773
27	484654.359	1253952.115	64	484410.495	1253387.846	101	483797.632	1253563.414
28	484647.940	1253924.495	65	484394.161	1253375.711	102	483819.265	1253569.523
29	484643.500	1253905.386	66	484381.633	1253364.000	103	483840.276	1253576.776
30	484638.341	1253835.099	67	484377.544	1253353.077	104	483858.625	1253584.171
31	484629.945	1253804.563	68	484377.544	1253342.631	105	483879.291	1253593.822
32	484619.498	1253768.662	69	484379.924	1253335.274	106	483899.702	1253608.136
33	484593.624	1253679.990	70	484395.564	1253302.842	107	483912.851	1253618.685
34	484571.012	1253638.152	71	484395.184	1253296.303	108	483924.455	1253629.083
35	484555.090	1253609.205	72	484388.419	1253293.535	109	483942.293	1253647.401
36	484550.609	1253604.725	73	484384.124	1253290.528	110	483959.523	1253660.476
37	484546.314	1253601.717	74	484380.417	1253286.821	111	482785.122	1253426.277

ID	E	N	ID	E	N	ID	E	N
112	482775.935	1253424.458	163	481987.418	1253282.634	214	482071.842	1253480.536
113	482770.159	1253426.710	164	481985.202	1253287.385	215	482103.180	1253477.755
114	482764.366	1253428.143	165	481982.195	1253291.680	216	482139.783	1253477.777
115	482760.059	1253428.717	166	481978.488	1253295.387	217	482163.312	1253479.839
116	482754.368	1253428.858	167	481974.194	1253298.394	218	482190.442	1253483.916
117	482738.960	1253428.275	168	481969.442	1253300.609	219	482223.536	1253491.863
118	482720.070	1253427.488	169	481965.609	1253301.636	220	482250.522	1253500.905
119	482706.737	1253426.935	170	481918.999	1253307.077	221	482276.194	1253511.647
120	482695.363	1253426.259	171	481887.791	1253326.633	222	482302.176	1253524.856
121	482685.314	1253423.232	172	481887.151	1253329.047	223	482338.192	1253549.327
122	482676.608	1253418.476	173	481885.117	1253333.408	224	482376.324	1253573.139
123	482618.451	1253382.700	174	481883.748	1253335.566	225	482419.730	1253597.712
124	482543.717	1253336.726	175	481839.810	1253398.745	226	482457.599	1253616.858
125	482500.803	1253320.618	176	481793.953	1253464.684	227	482524.805	1253646.673
126	482326.516	1253271.353	177	481790.327	1253468.812	228	482579.177	1253666.815
127	482321.489	1253264.312	178	481786.089	1253472.203	229	482656.197	1253689.737
128	482325.493	1253171.507	179	481780.276	1253475.257	230	482739.531	1253707.725
129	482315.672	1253112.939	180	481669.662	1253505.262	231	482805.137	1253717.178
130	482320.958	1253104.622	181	481662.437	1253506.798	232	482871.976	1253723.162
131	482297.001	1253051.776	182	481656.355	1253506.824	233	482928.505	1253727.171
132	482303.734	1253037.889	183	481650.419	1253505.654	234	483007.832	1253728.525
133	482313.746	1253035.022	184	481644.208	1253503.047	235	483097.884	1253723.979
134	482231.830	1253029.323	185	481639.914	1253500.040	236	483177.404	1253715.009
135	482225.002	1253022.902	186	481636.207	1253496.333	237	483243.463	1253703.417
136	482223.199	1253009.211	187	481633.199	1253492.039	238	483301.828	1253689.376
137	482208.479	1253009.629	188	481631.169	1253487.685	239	483363.482	1253670.248
138	482199.311	1253000.927	189	481630.189	1253484.466	240	483442.740	1253639.111
139	482199.231	1252997.570	190	481614.076	1253481.976	241	483500.004	1253611.634
140	482163.799	1253000.460	191	481600.068	1253479.812	242	483540.843	1253589.046
141	482102.646	1253034.703	192	481593.471	1253480.018	243	483595.560	1253567.551
142	482118.705	1253061.578	193	481591.885	1253481.274	244	481559.201	1253799.822
143	482125.811	1253075.085	194	481591.011	1253482.522	245	481441.844	1253621.718
144	482127.600	1253085.279	195	481587.304	1253486.229	246	481406.159	1253523.683
145	482126.217	1253093.960	196	481583.009	1253489.236	247	481385.939	1253525.866
146	482122.205	1253102.267	197	481578.499	1253491.339	248	481371.596	1253537.055
147	482116.857	1253108.319	198	481575.327	1253492.280	249	481339.307	1253538.561
148	482111.021	1253112.074	199	481489.179	1253512.163	250	481324.307	1253489.831
149	482068.564	1253132.857	200	481484.566	1253512.566	251	481319.774	1253492.920
150	482062.198	1253138.339	201	481479.343	1253512.110	252	481314.017	1253493.111
151	482057.544	1253141.672	202	481475.289	1253511.023	253	481316.118	1253492.548
152	482051.807	1253144.686	203	481470.984	1253509.240	254	481321.340	1253492.091
153	482046.355	1253146.719	204	481420.986	1253520.380	255	481326.563	1253492.548
154	482030.501	1253152.312	205	481454.898	1253614.315	256	481331.627	1253493.905
155	482040.505	1253231.095	206	481571.809	1253791.610	257	481336.378	1253498.121
156	482040.068	1253236.090	207	481774.902	1253648.651	258	481340.673	1253499.128
157	482038.712	1253241.154	208	481913.854	1253540.593	259	481344.405	1253502.860
158	482036.496	1253245.906	209	481939.383	1253524.917	260	481347.011	1253506.610
159	482032.673	1253251.016	210	481962.207	1253513.090	261	481376.715	1253560.958
160	482029.782	1253253.907	211	481991.279	1253500.740	262	481378.055	1253565.357
161	482024.656	1253257.291	212	482018.849	1253491.669	263	481378.512	1253570.579
162	481988.891	1253276.243	213	482045.654	1253485.093	264	481378.172	1253574.463

ID	E	N	ID	E	N	ID	E	N
265	481378.719	1253583.595	291	480950.513	1253906.976	317	480494.399	1254301.156
266	481380.950	1253586.825	292	480910.033	1253909.170	318	480492.472	1254281.796
267	481390.751	1253605.848	293	480897.495	1253920.645	319	480497.191	1254259.557
268	481399.377	1253621.428	294	480890.027	1253926.326	320	480494.280	1254218.017
269	481406.350	1253646.095	295	480882.742	1253930.246	321	480503.012	1254209.550
270	481406.776	1253650.963	296	480844.371	1253948.492	322	480525.281	1254211.946
271	481406.319	1253656.186	297	480807.159	1253962.155	323	480573.920	1254228.600
272	481405.036	1253660.976	298	480762.045	1253978.621	324	480594.072	1254225.970
273	481392.459	1253686.208	299	480677.071	1254006.374	325	480628.689	1254211.403
274	481390.053	1253689.644	300	480658.698	1254011.814	326	480646.152	1254215.107
275	481388.384	1253691.472	301	480643.716	1254015.362	327	480677.780	1254249.718
276	481388.477	1253692.541	302	480636.254	1254016.952	328	480689.829	1254249.216
277	481388.020	1253697.764	303	480529.962	1254026.296	329	480822.686	1254162.154
278	481386.606	1253702.951	304	480481.838	1254030.589	330	480874.987	1254168.540
279	481384.448	1253707.579	305	480469.589	1254031.996	331	480939.626	1254140.621
280	481381.441	1253711.874	306	480455.120	1254035.472	332	481005.348	1254110.729
281	481377.956	1253715.359	307	480453.961	1254154.785	333	481068.992	1254080.259
282	481271.860	1253786.003	308	480450.039	1254166.551	334	481123.813	1254052.889
283	481159.376	1253870.577	309	480439.441	1254408.522	335	481187.995	1254019.625
284	481152.899	1253874.638	310	480442.730	1254416.470	336	481260.681	1253980.280
285	481144.772	1253878.979	311	480449.567	1254418.836	337	481325.355	1253943.890
286	481138.294	1253880.481	312	480457.293	1254414.592	338	481364.929	1253920.860
287	481094.820	1253885.703	313	480463.103	1254400.065	339	481406.284	1253896.249
288	481072.029	1253891.489	314	480459.620	1254381.530	340	481451.045	1253868.938
289	481020.900	1253901.108	315	480486.343	1254356.395	341	481493.430	1253842.431
290	480988.307	1253904.978	316	480493.796	1254316.170	342	481527.601	1253820.550

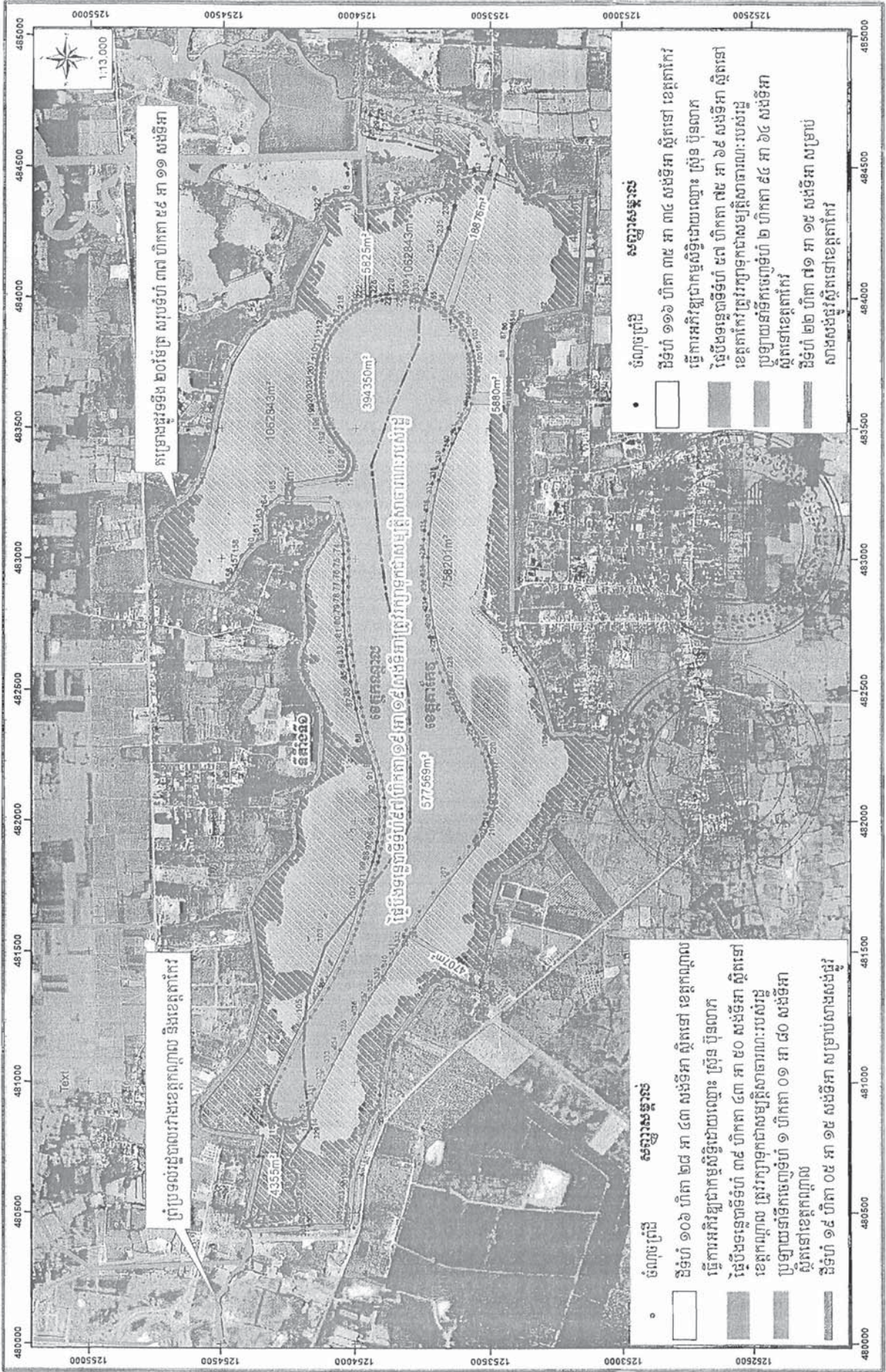
**តារាងទិសដៅកាត់បន្ថយប្រើប្រាស់ប្រព័ន្ធធាតុក្រាហ្វិក ក្នុងតំបន់បឹងទន្លេសាប ស្ថិតនៅឃុំក្រាំងខ្ពស់
ស្រុកធានី ខេត្តកោះកុង**

Projection UTM Zone 48N, Datum WGS 1984								
ID	E	N	ID	E	N	ID	E	N
1	480914.542	1254173.370	20	481692.703	1253962.718	39	483062.281	1253910.451
2	480979.513	1254181.302	21	481733.258	1253952.950	40	483123.479	1253916.613
3	481038.222	1254184.505	22	481884.390	1253842.635	41	483205.170	1253824.885
4	481125.035	1254189.240	23	481990.224	1253795.010	42	483271.585	1253791.544
5	481205.599	1254183.940	24	482035.910	1253794.548	43	483321.758	1253795.701
6	481249.020	1254162.805	25	482089.465	1253794.007	44	483360.768	1253794.581
7	481276.211	1254144.738	26	482133.064	1253793.567	45	483569.789	1253791.740
8	481316.221	1254119.890	27	482160.472	1253793.290	46	483823.790	1253759.906
9	481359.537	1254094.829	28	482205.137	1253792.839	47	483961.373	1253763.260
10	481400.293	1254073.193	29	482303.279	1253794.087	48	483983.180	1253756.271
11	481437.737	1254054.764	30	482393.753	1253797.137	49	483978.777	1253744.234
12	481465.963	1254041.753	31	482487.641	1253800.302	50	483972.439	1253729.429
13	481498.292	1254027.767	32	482575.841	1253821.366	51	483969.571	1253704.905
14	481532.465	1254014.005	33	482642.029	1253836.409	52	483945.882	1253683.981
15	481563.673	1254002.338	34	482737.018	1253856.763	53	483932.399	1253666.577
16	481587.248	1253994.076	35	482803.891	1253871.336	54	483917.809	1253647.526
17	481611.350	1253986.060	36	482867.060	1253885.115	55	483869.228	1253611.207
18	481639.346	1253977.366	37	482930.329	1253893.842	56	483891.099	1253626.759
19	481667.365	1253969.390	38	482996.905	1253903.025	57	483840.207	1253598.140

ID	E	N	ID	E	N	ID	E	N
58	483811.490	1253588.051	82	483008.750	1253748.484	106	482158.397	1253499.378
59	483785.674	1253581.134	83	482972.250	1253748.564	107	482133.622	1253497.588
60	483756.212	1253575.589	84	482940.040	1253747.755	108	482106.454	1253497.555
61	483726.436	1253572.622	85	482914.210	1253746.460	109	482082.182	1253499.482
62	483688.383	1253572.216	86	482880.948	1253744.108	110	482053.337	1253503.888
63	483660.562	1253574.577	87	482807.952	1253737.534	111	482027.092	1253510.013
64	483637.741	1253577.961	88	482851.481	1253741.260	112	481991.775	1253521.964
65	483596.317	1253588.245	89	482744.311	1253728.906	113	481970.164	1253531.370
66	483553.791	1253604.590	90	482704.092	1253721.329	114	481942.051	1253546.388
67	483520.895	1253623.019	91	482653.737	1253709.781	115	481925.417	1253556.843
68	483488.392	1253639.812	92	482605.913	1253696.386	116	481902.431	1253575.204
69	483455.576	1253655.246	93	482567.351	1253683.852	117	481857.254	1253610.808
70	483418.095	1253671.164	94	482535.356	1253672.199	118	481799.938	1253654.679
71	483381.499	1253685.106	95	482489.987	1253653.833	119	481727.364	1253708.158
72	483350.333	1253695.657	96	482449.708	1253635.284	120	481655.217	1253759.143
73	483318.226	1253705.409	97	482421.062	1253620.940	121	481582.421	1253808.473
74	483289.549	1253713.172	98	482384.339	1253601.075	122	481566.009	1253838.962
75	483260.845	1253720.060	99	482350.169	1253580.727	123	481526.500	1253844.961
76	483223.114	1253727.794	100	482314.976	1253558.092	124	481444.689	1253896.373
77	483186.450	1253733.845	101	482291.645	1253541.940	125	481333.571	1253961.085
78	483146.864	1253738.984	102	482259.371	1253526.040	126	481215.401	1254004.174
79	483110.691	1253742.885	103	482228.807	1253514.496	127	481131.125	1254051.561
80	483077.302	1253745.604	104	482206.704	1253508.101	128	481039.180	1254116.935
81	483041.391	1253747.565	105	482186.564	1253503.537	129	480972.180	1254147.415



ផែនទីឧបសម្ព័ន្ធផែលចុះផ្សារក្រីក្រប្រទេសខ្មែរ... ផ្នែក... ផ្នែក ១១ សង្កាត់



តារាងលិខិតបញ្ជីសម្ព័ន្ធន៍ នៃអនុក្រឹត្យលេខ ៤៦ អនក្រ.បក.ចុះថ្ងៃទី ២៧ ខែ វិច្ឆិកា ឆ្នាំ ២០២២

ចំណុចព្រំដីស្ថិតនៅឃុំទ្រា ឃុំព្រែកវកា ស្រុកកណ្តាលស្ទឹង ខេត្តកណ្តាល អភិវឌ្ឍន៍ដីកម្មសិទ្ធិឯកជនដោយឈ្មោះ ស្រ្តី ប៊ុនលាភ								
Projection UTM Zone 48N, Datum WGS 1984								
ID	E	N	ID	E	N	ID	E	N
1	480493.752	1254316.178	46	482035.694	1254215.695	91	482152.904	1253920.074
2	480494.356	1254301.141	47	482080.477	1254197.664	92	482100.225	1253912.460
3	480492.428	1254281.782	48	482111.508	1254177.212	93	482055.515	1253909.257
4	480497.191	1254259.557	49	482139.150	1254145.027	94	482016.647	1253908.865
5	480494.280	1254218.017	50	482148.298	1254138.624	95	481977.035	1253910.663
6	480503.012	1254209.550	51	482191.302	1254120.979	96	481923.025	1253916.863
7	480525.237	1254211.932	52	482325.557	1254113.238	97	481884.574	1253923.932
8	480571.862	1254227.896	53	482418.425	1254116.035	98	481844.459	1253933.719
9	480594.029	1254225.955	54	482500.955	1254154.445	99	481804.968	1253945.872
10	480628.689	1254211.403	55	482540.800	1254180.420	100	481770.458	1253958.821
11	480646.152	1254215.107	56	482558.201	1254189.637	101	481739.596	1253972.008
12	480677.751	1254249.719	57	482576.691	1254195.457	102	481690.948	1253983.834
13	480689.829	1254249.216	58	482598.288	1254199.374	103	481529.021	1254102.028
14	480822.686	1254162.154	59	482622.459	1254197.688	104	481326.118	1254176.011
15	480874.987	1254168.540	60	482655.853	1254189.264	105	481258.439	1254180.463
16	480850.752	1254178.807	61	482684.691	1254176.701	106	480958.701	1254325.944
17	480838.998	1254194.878	62	482742.559	1254173.419	107	480936.559	1254332.148
18	480831.504	1254211.101	63	482795.093	1254179.144	108	480919.769	1254333.913
19	480827.855	1254225.450	64	482872.540	1254184.858	109	480905.785	1254332.908
20	480826.451	1254241.601	65	482935.290	1254180.559	110	480893.690	1254330.464
21	480827.360	1254255.216	66	482957.034	1254174.506	111	480877.305	1254324.117
22	480829.417	1254265.002	67	483021.912	1254137.770	112	480867.175	1254318.090
23	480501.601	1254324.906	68	483048.430	1254118.177	113	480855.709	1254309.096
24	480496.496	1254358.702	69	483074.861	1254102.318	114	480844.058	1254295.943
25	480469.874	1254382.890	70	483114.471	1254072.856	115	480835.107	1254280.819
26	480471.946	1254391.034	71	483135.171	1254061.014	116	484346.308	1253976.997
27	480714.972	1254339.421	72	483091.175	1254052.038	117	484369.434	1254008.012
28	480716.492	1254356.292	73	483052.180	1254046.937	118	484374.238	1254019.074
29	480793.435	1254340.034	74	483019.010	1254044.678	119	484368.082	1254072.510
30	480816.847	1254516.352	75	482964.126	1254044.216	120	484360.813	1254091.387
31	480830.733	1254560.651	76	482919.180	1254045.454	121	484345.656	1254143.214
32	480847.096	1254573.638	77	482873.129	1254045.735	122	484324.591	1254112.031
33	480866.175	1254577.340	78	482829.451	1254045.090	123	484297.431	1254114.852
34	480889.605	1254575.387	79	482787.329	1254043.615	124	484259.640	1254102.314
35	480905.441	1254570.108	80	482744.170	1254041.228	125	484032.581	1254116.975
36	481126.761	1254394.015	81	482694.689	1254037.427	126	483952.527	1254130.181
37	481316.093	1254339.405	82	482657.390	1254033.746	127	483942.799	1254304.302
38	481377.880	1254338.295	83	482630.671	1254030.685	128	483937.180	1254313.217
39	481665.072	1254383.221	84	482579.321	1254023.879	129	483911.900	1254329.421
40	481707.884	1254365.135	85	482534.171	1254016.845	130	483902.260	1254338.431
41	481768.012	1254328.083	86	482471.543	1254005.315	131	483874.862	1254380.415
42	481879.006	1254225.914	87	482430.219	1253996.659	132	483862.733	1254391.441
43	481903.318	1254213.758	88	482295.753	1253962.501	133	483744.244	1254461.679
44	481932.399	1254210.768	89	482251.910	1253945.839	134	483685.743	1254482.925
45	481989.423	1254217.488	90	482199.502	1253930.289	135	483595.331	1254496.174

ID	E	N	ID	E	N	ID	E	N
136	483543.067	1254509.110	175	483321.701	1254051.505	214	483891.332	1254090.647
137	483482.538	1254519.926	176	483327.300	1254043.847	215	483910.909	1254075.529
138	483424.361	1254527.791	177	483335.646	1254036.166	216	483925.209	1254062.785
139	483291.645	1254575.549	178	483345.386	1254030.352	217	483939.839	1254047.852
140	483274.360	1254588.421	179	483356.120	1254026.646	218	483952.275	1254033.373
141	483230.732	1254616.072	180	483364.791	1254025.403	219	483965.062	1254016.157
142	483166.424	1254701.914	181	483374.982	1254025.627	220	483976.682	1253998.001
143	483142.542	1254720.127	182	483386.671	1254028.279	221	483985.834	1253981.308
144	483119.759	1254729.648	183	483398.605	1254034.003	222	483993.382	1253965.195
145	483102.112	1254733.976	184	483408.956	1254042.578	223	483999.259	1253950.603
146	483077.274	1254735.168	185	483417.977	1254050.537	224	484006.275	1253929.327
147	483027.714	1254730.827	186	483428.150	1254058.989	225	484011.312	1253909.340
148	482977.716	1254722.676	187	483436.647	1254065.509	226	484015.746	1253883.218
149	482955.766	1254716.220	188	483447.078	1254073.191	227	484017.825	1253857.643
150	482944.717	1254700.860	189	483458.310	1254080.972	228	484018.066	1253844.178
151	482931.213	1254670.296	190	483469.515	1254088.031	229	484016.194	1253812.835
152	482891.733	1254499.125	191	483480.890	1254094.763	230	484012.560	1253789.415
153	482897.208	1254485.575	192	483491.914	1254100.904	231	484009.164	1253774.079
154	482917.235	1254472.588	193	483502.365	1254106.243	232	484006.070	1253762.641
155	482945.275	1254457.166	194	483512.549	1254111.122	233	484002.226	1253750.166
156	482965.056	1254446.472	195	483523.721	1254116.158	234	484167.749	1253697.114
157	483008.656	1254427.221	196	483538.036	1254121.942	235	484241.833	1253662.718
158	483014.333	1254423.468	197	483556.705	1254128.644	236	484318.310	1253641.209
159	483052.732	1254387.772	198	483573.563	1254133.821	237	484405.875	1253625.676
160	483071.985	1254365.651	199	483599.931	1254140.284	238	484460.456	1253620.930
161	483076.982	1254347.226	200	483623.776	1254144.748	239	484467.275	1253633.830
162	483174.018	1254346.913	201	483648.099	1254147.654	240	484473.207	1253650.328
163	483194.725	1254334.829	202	483666.360	1254148.948	241	484473.368	1253654.303
164	483215.965	1254315.712	203	483688.177	1254149.495	242	484414.205	1253676.044
165	483240.962	1254284.652	204	483704.332	1254149.105	243	484406.628	1253715.688
166	483240.192	1254255.411	205	483723.591	1254147.759	244	484390.727	1253768.638
167	483245.348	1254257.276	206	483742.575	1254145.575	245	484370.944	1253823.592
168	483252.065	1254258.473	207	483755.086	1254143.734	246	484367.965	1253825.400
169	483265.477	1254257.418	208	483776.190	1254139.664	247	484344.756	1253804.556
170	483272.809	1254254.680	209	483793.908	1254135.660	248	484353.951	1253800.424
171	483280.500	1254249.994	210	483815.162	1254129.339	249	484333.623	1253761.624
172	483287.881	1254242.319	211	483837.925	1254120.638			

ចំណុចប្រាំបីដទៃទៀតត្រូវរក្សាទុក ស្ថិតនៅឃុំទ្រា ឃុំព្រៃករកា ស្រុកកណ្តាលស្ទឹង ខេត្តកណ្តាល

Projection UTM Zone 48N, Datum WGS 1984

ID	E	N	ID	E	N	ID	E	N
1	480914.542	1254173.370	9	480849.218	1254261.384	17	480911.570	1254313.498
2	480863.208	1254195.251	10	480853.233	1254272.312	18	480919.541	1254313.892
3	480860.107	1254199.126	11	480858.294	1254281.194	19	480928.246	1254313.201
4	480853.804	1254209.734	12	480864.558	1254289.520	20	480939.581	1254311.171
5	480849.555	1254220.588	13	480870.962	1254295.806	21	480948.148	1254308.517
6	480846.781	1254234.646	14	480877.127	1254300.650	22	480959.267	1254303.706
7	480846.463	1254245.282	15	480888.652	1254307.270	23	480972.849	1254297.232
8	480847.500	1254253.943	16	480899.114	1254311.191	24	480987.046	1254290.321

ID	E	N	ID	E	N	ID	E	N
25	481002.053	1254283.017	72	483147.355	1254043.436	119	483632.551	1254125.739
26	481019.979	1254274.291	73	483169.027	1254049.356	120	483655.785	1254128.285
27	481052.106	1254258.653	74	483216.245	1254064.692	121	483674.333	1254129.286
28	481092.480	1254239.001	75	483235.878	1254091.742	122	483692.675	1254129.381
29	481205.599	1254183.940	76	483239.530	1254230.306	123	483710.145	1254128.697
30	481733.258	1253952.950	77	483243.637	1254234.431	124	483733.199	1254126.648
31	481783.438	1253932.380	78	483248.884	1254237.287	125	483754.277	1254123.529
32	481813.756	1253922.001	79	483253.893	1254238.484	126	483776.046	1254119.310
33	481843.266	1253913.250	80	483258.233	1254238.348	127	483793.330	1254115.186
34	481865.969	1253907.515	81	483265.652	1254235.900	128	483808.686	1254110.416
35	481893.632	1253901.655	82	483269.947	1254232.568	129	483821.264	1254105.875
36	481920.328	1253897.044	83	483272.063	1254230.068	130	483834.425	1254100.213
37	481948.315	1253893.303	84	483297.608	1254071.740	131	483847.155	1254094.049
38	481981.635	1253890.215	85	483300.872	1254051.507	132	483860.512	1254086.676
39	482017.091	1253888.855	86	483303.896	1254042.221	133	483872.995	1254078.888
40	482051.848	1253889.052	87	483307.477	1254036.633	134	483881.167	1254073.380
41	482088.652	1253891.315	88	483312.298	1254030.581	135	483896.300	1254061.681
42	482121.832	1253894.829	89	483317.715	1254025.056	136	483909.102	1254050.463
43	482151.904	1253899.557	90	483323.574	1254020.196	137	483922.978	1254036.661
44	482177.258	1253904.522	91	483330.101	1254015.813	138	483934.820	1254023.239
45	482201.466	1253910.158	92	483340.487	1254010.761	139	483945.353	1254009.466
46	482236.110	1253919.699	93	483346.705	1254008.548	140	483953.444	1253997.632
47	482264.148	1253928.992	94	483354.532	1254006.608	141	483960.035	1253987.006
48	482302.166	1253943.527	95	483362.415	1254005.529	142	483971.770	1253964.472
49	482340.101	1253954.133	96	483369.656	1254005.272	143	483980.114	1253944.742
50	482373.131	1253962.698	97	483377.019	1254005.727	144	483987.063	1253923.765
51	482401.806	1253969.660	98	483387.058	1254007.523	145	483992.335	1253902.557
52	482435.131	1253977.261	99	483396.032	1254010.317	146	483996.731	1253873.592
53	482472.137	1253985.039	100	483404.868	1254014.532	147	483998.063	1253844.325
54	482493.645	1253989.331	101	483411.455	1254018.608	148	483996.317	1253815.080
55	482523.975	1253994.789	102	483417.048	1254022.903	149	483992.924	1253793.215
56	482555.574	1254000.024	103	483422.199	1254027.588	150	483987.978	1253771.958
57	482594.291	1254005.793	104	483429.083	1254033.762	151	483983.180	1253756.271
58	482636.468	1254011.243	105	483435.937	1254039.576	152	483961.373	1253763.260
59	482676.657	1254015.620	106	483443.291	1254045.441	153	483923.790	1253765.906
60	482709.517	1254018.598	107	483450.149	1254050.650	154	483569.780	1253871.740
61	482746.703	1254021.350	108	483457.648	1254056.183	155	483360.768	1253940.531
62	482797.560	1254024.061	109	483465.891	1254061.893	156	483453.249	1253906.717
63	482845.881	1254025.522	110	483475.304	1254068.040	157	483856.194	1253884.968
64	482895.168	1254025.720	111	483483.882	1254073.444	158	482487.641	1253800.302
65	482931.867	1254025.176	112	483499.924	1254082.485	159	481990.224	1253795.010
66	482972.958	1254024.392	113	483521.278	1254093.123	160	481834.590	1253842.635
67	483003.667	1254024.229	114	483540.264	1254101.308	161	481784.563	1253915.647
68	483033.879	1254025.379	115	483564.710	1254110.186			
69	483058.838	1254027.567	116	483583.951	1254115.868			
70	483082.399	1254030.528	117	483598.330	1254119.477			
71	483114.406	1254035.915	118	483613.339	1254122.645			



ចំណុចព្រំដី ស្ថិតនៅឃុំក្រាំងឆ្នង ស្រុកបាទី ខេត្តតាកែវ អភិវឌ្ឍជាមូលដ្ឋានដោយឈ្មោះ ស្រ៊ុន ប៊ុនណារ

Projection UTM Zone 48N, Datum WGS 1984

ID	E	N	ID	E	N	ID	E	N
1	484443.383	1253403.539	46	484474.519	1253593.531	91	483633.885	1253429.075
2	484487.493	1253430.261	47	484486.017	1253558.208	92	483639.243	1253557.505
3	484528.989	1253459.793	48	484481.105	1253503.395	93	483651.917	1253555.467
4	484473.005	1253474.565	49	484460.438	1253620.902	94	483669.734	1253553.446
5	484529.904	1253490.277	50	484451.623	1253602.038	95	483687.625	1253552.254
6	484575.039	1253506.304	51	484465.722	1253555.811	96	483705.552	1253551.895
7	484606.929	1253514.774	52	484461.506	1253509.723	97	483720.269	1253552.285
8	484635.984	1253539.313	53	483961.820	1253671.709	98	483741.360	1253553.676
9	484648.637	1253563.851	54	483980.520	1253701.200	99	483759.163	1253555.812
10	484656.508	1253597.306	55	483991.314	1253722.467	100	483776.848	1253558.773
11	484674.663	1253659.127	56	484002.226	1253750.166	101	483797.632	1253563.414
12	484686.674	1253739.802	57	484055.968	1253732.941	102	483819.265	1253569.523
13	484689.637	1253754.284	58	484167.817	1253697.082	103	483840.376	1253576.776
14	484684.659	1253778.585	59	484241.833	1253662.718	104	483858.625	1253584.171
15	484662.769	1253825.092	60	484326.499	1253638.905	105	483879.291	1253593.822
16	484660.801	1253833.130	61	484405.875	1253625.676	106	483899.702	1253608.136
17	484660.041	1253840.178	62	484453.915	1253480.722	107	483912.851	1253618.685
18	484660.242	1253847.629	63	484420.417	1253400.414	108	483924.455	1253629.083
19	484661.840	1253856.295	64	484410.495	1253387.846	109	483942.293	1253647.401
20	484664.848	1253864.778	65	484394.161	1253375.711	110	483589.523	1253430.476
21	484670.100	1253874.089	66	484381.633	1253364.000	111	482785.122	1253426.277
22	484681.701	1253890.350	67	484377.544	1253353.077	112	482775.935	1253424.458
23	484689.738	1253922.331	68	484377.544	1253342.631	113	482770.159	1253426.710
24	484698.249	1253947.432	69	484379.924	1253335.274	114	482764.366	1253428.143
25	484698.395	1253951.712	70	484395.564	1253302.842	115	482760.059	1253428.717
26	484661.145	1253955.249	71	484395.184	1253296.303	116	482754.368	1253428.858
27	484654.359	1253952.115	72	484388.419	1253293.535	117	482738.960	1253428.275
28	484647.940	1253924.495	73	484384.124	1253290.528	118	482720.070	1253427.488
29	484643.500	1253905.386	74	484380.417	1253286.821	119	482706.777	1253426.935
30	484638.341	1253835.099	75	484377.410	1253282.526	120	482695.362	1253426.259
31	484629.945	1253804.563	76	484375.195	1253277.775	121	482685.314	1253418.232
32	484619.498	1253768.662	77	484373.838	1253272.711	122	482676.601	1253418.476
33	484593.624	1253679.990	78	484373.490	1253266.058	123	482668.451	1253382.700
34	484571.012	1253638.152	79	484374.008	1253257.012	124	482654.717	1253336.726
35	484555.090	1253609.205	80	484380.100	1253150.625	125	482500.803	1253370.618
36	484550.609	1253604.725	81	483973.210	1253169.361	126	482326.516	1253271.353
37	484546.314	1253601.717	82	483953.046	1253274.973	127	482321.489	1253264.312
38	484541.979	1253599.696	83	483925.550	1253385.807	128	482325.493	1253171.507
39	484535.046	1253597.698	84	483921.942	1253390.711	129	482315.672	1253112.939
40	484527.899	1253595.752	85	483891.298	1253418.150	130	482320.958	1253104.622
41	484504.739	1253589.445	86	483872.703	1253423.635	131	482297.001	1253051.776
42	484501.212	1253588.656	87	483838.489	1253428.427	132	482303.734	1253037.889
43	484494.670	1253588.083	88	483767.776	1253431.626	133	482313.746	1253035.022
44	484487.711	1253588.692	89	483683.226	1253428.380	134	482331.830	1253029.323
45	484480.963	1253590.500	90	483666.922	1253429.215	135	482325.002	1253022.902

ID	E	N	ID	E	N	ID	E	N
136	482223.199	1253009.211	185	481639.914	1253500.040	234	483007.832	1253728.525
137	482208.479	1253009.629	186	481636.207	1253496.333	235	483097.884	1253723.979
138	482199.311	1253000.927	187	481633.199	1253492.039	236	483177.404	1253715.009
139	482199.231	1252997.570	188	481631.169	1253487.685	237	483243.463	1253703.417
140	482163.799	1253000.460	189	481630.189	1253484.466	238	483301.828	1253689.376
141	482102.646	1253034.703	190	481614.076	1253481.976	239	483363.482	1253670.248
142	482118.705	1253061.578	191	481600.068	1253479.812	240	483442.740	1253639.111
143	482125.811	1253075.085	192	481593.471	1253480.018	241	483500.004	1253611.634
144	482127.600	1253085.279	193	481591.885	1253481.274	242	483540.843	1253589.046
145	482126.217	1253093.960	194	481591.011	1253482.522	243	483595.560	1253567.551
146	482122.205	1253102.267	195	481587.304	1253486.229	244	481559.201	1253799.822
147	482116.857	1253108.319	196	481583.009	1253489.236	245	481441.844	1253621.718
148	482111.021	1253112.074	197	481578.499	1253491.339	246	481406.159	1253523.683
149	482068.564	1253132.857	198	481575.327	1253492.280	247	481385.939	1253525.866
150	482062.198	1253138.339	199	481489.179	1253512.163	248	481371.596	1253487.055
151	482057.544	1253141.672	200	481484.566	1253512.566	249	481339.304	1253458.561
152	482051.807	1253144.686	201	481479.343	1253512.110	250	481314.297	1253485.831
153	482046.355	1253146.719	202	481475.289	1253511.023	251	481313.474	1253492.920
154	482030.501	1253152.312	203	481470.984	1253509.240	252	481314.017	1253493.111
155	482040.505	1253231.095	204	481420.986	1253520.380	253	481316.118	1253492.548
156	482040.068	1253236.090	205	481454.898	1253614.315	254	481321.340	1253492.091
157	482038.712	1253241.154	206	481571.809	1253791.610	255	481326.563	1253492.548
158	482036.496	1253245.906	207	481774.902	1253648.651	256	481331.627	1253493.905
159	482032.673	1253251.016	208	481913.854	1253540.593	257	481336.378	1253496.121
160	482029.782	1253253.907	209	481939.383	1253524.917	258	481340.673	1253499.128
161	482024.656	1253257.291	210	481962.207	1253513.090	259	481344.405	1253502.860
162	481988.891	1253276.243	211	481991.279	1253500.740	260	481347.011	1253506.610
163	481987.418	1253282.634	212	482018.849	1253491.669	261	481376.715	1253560.358
164	481985.202	1253287.385	213	482045.654	1253485.093	262	481378.055	1253565.357
165	481982.195	1253291.680	214	482071.842	1253480.536	263	481378.512	1253570.579
166	481978.488	1253295.387	215	482103.180	1253477.755	264	481378.172	1253574.463
167	481974.194	1253298.394	216	482139.783	1253477.777	265	481378.719	1253583.595
168	481969.442	1253300.609	217	482163.312	1253479.839	266	481380.959	1253586.825
169	481965.609	1253301.636	218	482190.442	1253483.916	267	481371.751	1253605.848
170	481918.999	1253307.077	219	482223.536	1253491.863	268	481399.373	1253621.428
171	481887.791	1253326.633	220	482250.522	1253500.905	269	481446.350	1253646.095
172	481887.151	1253329.047	221	482276.194	1253511.647	270	481446.248	1253650.963
173	481885.117	1253333.408	222	482302.176	1253524.856	271	481406.319	1253656.186
174	481883.748	1253335.566	223	482338.192	1253549.327	272	481405.036	1253660.976
175	481839.810	1253398.745	224	482376.324	1253573.139	273	481392.459	1253686.208
176	481793.953	1253464.684	225	482419.730	1253597.712	274	481390.053	1253689.644
177	481790.327	1253468.812	226	482457.599	1253616.858	275	481388.387	1253691.472
178	481786.089	1253472.203	227	482524.805	1253646.673	276	481388.477	1253692.541
179	481780.276	1253475.257	228	482579.177	1253666.815	277	481388.020	1253687.764
180	481669.662	1253505.262	229	482656.197	1253689.737	278	481386.606	1253702.951
181	481662.437	1253506.798	230	482739.531	1253707.725	279	481384.448	1253707.579
182	481656.355	1253506.824	231	482805.137	1253717.178	280	481381.441	1253711.874
183	481650.419	1253505.654	232	482871.976	1253723.162	281	481377.956	1253718.359
184	481644.208	1253503.047	233	482928.505	1253727.171	282	481371.860	1253786.003

ID	E	N	ID	E	N	ID	E	N
283	481159.376	1253870.577	303	480529.962	1254026.296	323	480573.920	1254228.600
284	481152.899	1253874.638	304	480481.838	1254030.589	324	480594.072	1254225.970
285	481144.772	1253878.979	305	480469.589	1254031.996	325	480628.689	1254211.403
286	481138.294	1253880.481	306	480455.120	1254035.472	326	480646.152	1254215.107
287	481094.820	1253885.703	307	480453.961	1254154.785	327	480677.780	1254249.718
288	481072.029	1253891.489	308	480450.039	1254166.551	328	480689.829	1254249.216
289	481020.900	1253901.108	309	480439.441	1254408.522	329	480822.686	1254162.154
290	480988.307	1253904.978	310	480442.730	1254416.470	330	480874.987	1254168.540
291	480950.513	1253906.976	311	480449.567	1254418.836	331	480939.626	1254140.621
292	480910.033	1253909.170	312	480457.293	1254414.592	332	481005.348	1254110.729
293	480897.495	1253920.645	313	480463.103	1254400.065	333	481068.992	1254080.259
294	480890.027	1253926.326	314	480459.620	1254381.530	334	481123.813	1254052.889
295	480882.742	1253930.246	315	480486.343	1254356.395	335	481187.995	1254019.625
296	480844.371	1253948.492	316	480493.796	1254316.170	336	481260.681	1253980.280
297	480807.159	1253962.155	317	480494.399	1254301.156	337	481325.355	1253943.890
298	480762.045	1253978.621	318	480492.472	1254281.796	338	481364.929	1253920.860
299	480677.071	1254006.374	319	480497.191	1254259.557	339	481406.284	1253896.249
300	480658.698	1254011.814	320	480494.280	1254218.017	340	481451.045	1253868.938
301	480643.716	1254015.362	321	480503.012	1254209.550	341	481493.430	1253842.431
302	480636.254	1254016.952	322	480525.281	1254211.946	342	481527.601	1253820.550

ចំណុចប្រាំបីដទៃទៀតនៅក្នុងតំបន់ស្រុកបាទី ខេត្តតាកែវ

Projection UTM Zone 48N, Datum WGS 1984

ID	E	N	ID	E	N	ID	E	N
1	480914.542	1254173.370	26	482133.064	1253793.567	51	483959.571	1253704.905
2	480979.513	1254181.302	27	482160.472	1253793.290	52	483945.882	1253683.931
3	481038.222	1254184.505	28	482205.137	1253792.839	53	483932.399	1253666.577
4	481125.035	1254189.240	29	482303.279	1253794.087	54	483914.809	1253647.526
5	481205.599	1254183.940	30	482393.753	1253797.137	55	483869.228	1253611.207
6	481249.020	1254162.805	31	482487.641	1253800.302	56	483891.099	1253626.759
7	481276.211	1254144.738	32	482575.841	1253821.366	57	483840.207	1253598.140
8	481316.221	1254119.890	33	482642.029	1253836.409	58	483811.490	1253588.051
9	481359.537	1254094.829	34	482737.018	1253856.763	59	483785.574	1253581.134
10	481400.293	1254073.193	35	482803.891	1253871.336	60	483756.312	1253575.589
11	481437.737	1254054.764	36	482867.060	1253885.115	61	483726.426	1253571.622
12	481465.963	1254041.753	37	482930.329	1253893.842	62	483688.583	1253572.216
13	481498.292	1254027.767	38	482996.905	1253903.025	63	483650.350	1253574.577
14	481532.465	1254014.005	39	483062.281	1253910.451	64	483637.741	1253577.961
15	481563.673	1254002.338	40	483123.429	1253916.613	65	483596.317	1253588.245
16	481587.248	1253994.076	41	483205.512	1253924.885	66	483557.791	1253604.590
17	481611.350	1253986.060	42	483271.585	1253931.544	67	483520.895	1253623.019
18	481639.346	1253977.366	43	483322.758	1253936.701	68	483488.392	1253639.812
19	481667.365	1253969.390	44	483360.768	1253940.531	69	483455.576	1253655.246
20	481692.703	1253962.718	45	483569.789	1253871.740	70	483418.095	1253671.164
21	481733.258	1253952.950	46	483823.790	1253765.906	71	483381.499	1253686.106
22	481884.390	1253842.635	47	483961.373	1253763.260	72	483350.333	1253695.657
23	481990.224	1253795.010	48	483983.180	1253756.271	73	483318.226	1253705.709
24	482035.910	1253794.548	49	483978.722	1253744.234	74	483289.549	1253718.172
25	482089.465	1253794.007	50	483972.439	1253729.429	75	483260.845	1253720.060

ID	E	N	ID	E	N	ID	E	N
76	483223.114	1253727.794	94	482535.356	1253672.199	112	481991.775	1253521.964
77	483186.450	1253733.845	95	482489.987	1253653.833	113	481970.164	1253531.370
78	483146.864	1253738.984	96	482449.708	1253635.284	114	481942.051	1253546.388
79	483110.691	1253742.885	97	482421.062	1253620.940	115	481925.417	1253556.843
80	483077.302	1253745.604	98	482384.339	1253601.075	116	481902.431	1253575.204
81	483041.391	1253747.565	99	482350.169	1253580.727	117	481857.254	1253610.808
82	483008.750	1253748.484	100	482314.976	1253558.092	118	481799.938	1253654.679
83	482972.250	1253748.564	101	482291.645	1253541.940	119	481727.364	1253708.158
84	482940.040	1253747.755	102	482259.371	1253526.040	120	481655.217	1253759.143
85	482914.210	1253746.460	103	482228.807	1253514.496	121	481582.431	1253808.473
86	482880.948	1253744.108	104	482206.704	1253508.101	122	481556.509	1253818.962
87	482807.952	1253737.534	105	482186.564	1253503.537	123	481526.500	1253844.961
88	482851.481	1253741.260	106	482158.397	1253499.378	124	481484.183	1253896.373
89	482744.311	1253728.906	107	482133.622	1253497.588	125	481455.749	1253961.045
90	482704.092	1253721.329	108	482106.454	1253497.555	126	481426.145	1254001.174
91	482653.737	1253709.781	109	482082.182	1253499.482	127	481381.125	1254071.561
92	482605.913	1253696.386	110	482053.337	1253503.888	128	481039.180	1254116.935
93	482567.351	1253683.852	111	482027.092	1253510.013	129	480973.180	1254147.415

