



Ministry of Health and Sports (Myanmar)

Department of Public Health

Central Epidemiology Unit

(3 June 2020)

Coronavirus Disease 2019 (COVID-19)

Situation Report - 57

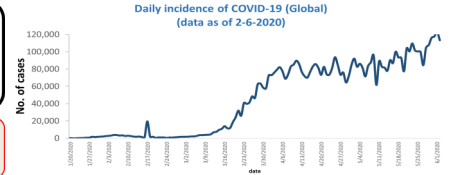
Data as reported by States and Regions by 11:30 PM MST 2 June 2020

Global Situation
(WHO situation report - 134)
data as of 14:30 MST 2 June 2020

Confirmed cases
6,194,533

Deaths
376,320

Case Fatality Rate
6.1 %



Myanmar Situation

Total tested
29,923

Confirmed cases
233

Negative
29,695

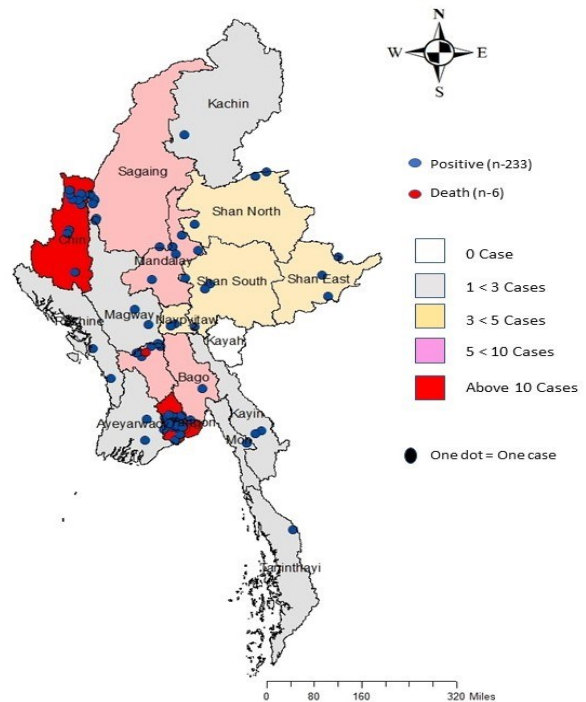
Recovered
145
62.2% of confirmed cases

Active
82
35.1% of confirmed cases

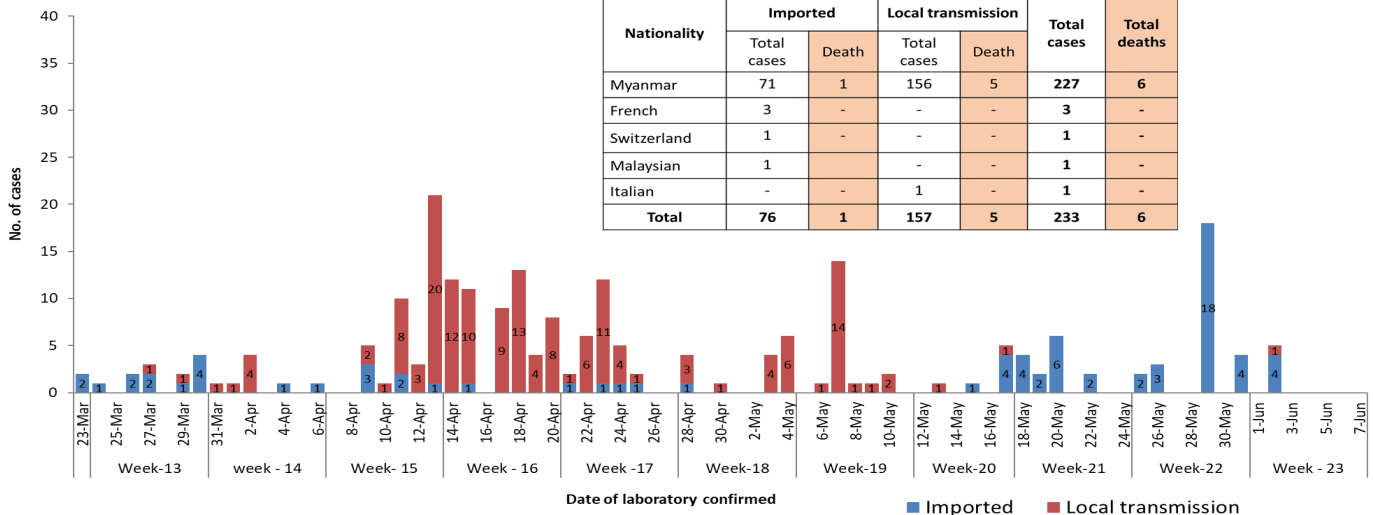
Death
6
2.6% of confirmed cases

No.	State/Region	COVID –19 Confirmed case	Recovered	Deaths
1.	Yangon	183 (1 New)	110	5
2.	Chin	10 (1 New)	3	-
3.	Bago	8(1 New)	6	1
4.	Sagaing	7	7	-
5.	Shan(East)	3	3	-
6.	Mandalay	3	3	-
7.	Shan(South)	3 (1 New)	2	-
8.	Shan(North)	3 (1 New)	2	-
9.	Naypyitaw	2	2	-
10.	Kayin	2	2	-
11.	Magway	2	1 (1 new)	-
12.	Rakhine	2	-	-
13.	Ayeyarwaddy	2	1 (new)	-
14.	Mon	1	1	-
15.	Kachin	1	1	-
16.	Thanintharyi	1	1	-
17.	Kayah	-	-	-
Total		233 (5 new)	145 (2 new)	6

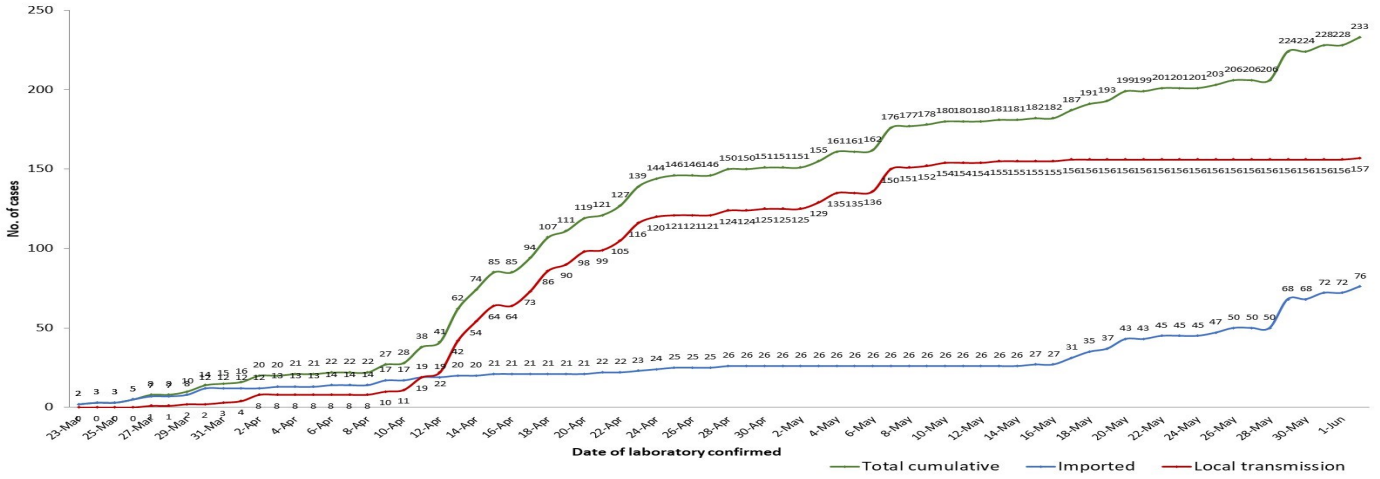
Map showing COVID-19 laboratory confirmed cases



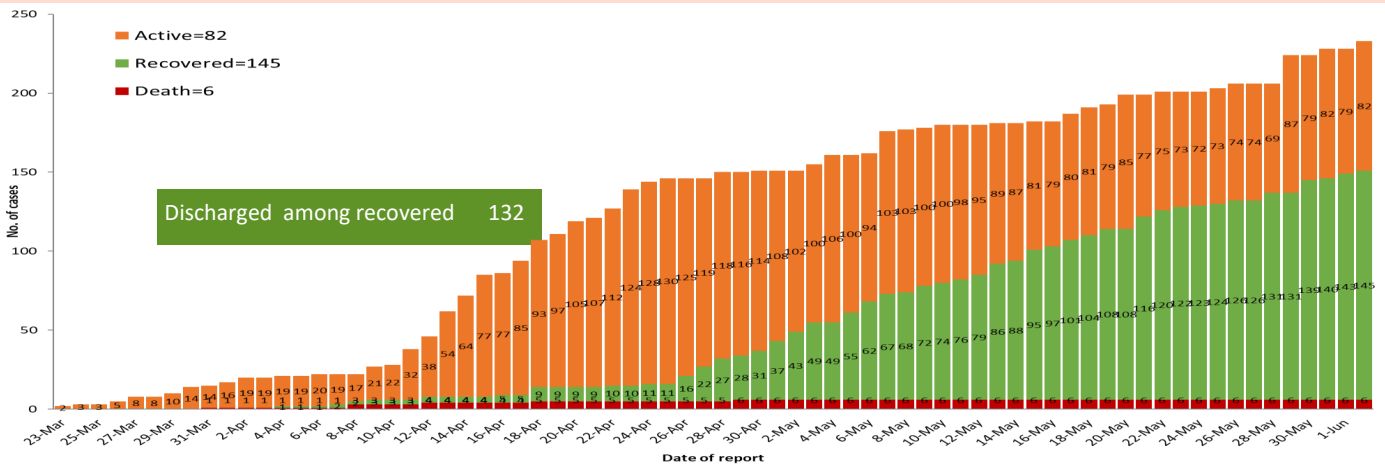
COVID-19 confirmed cases by types of transmissions (as of 2-6-2020,11:30 pm) n=233



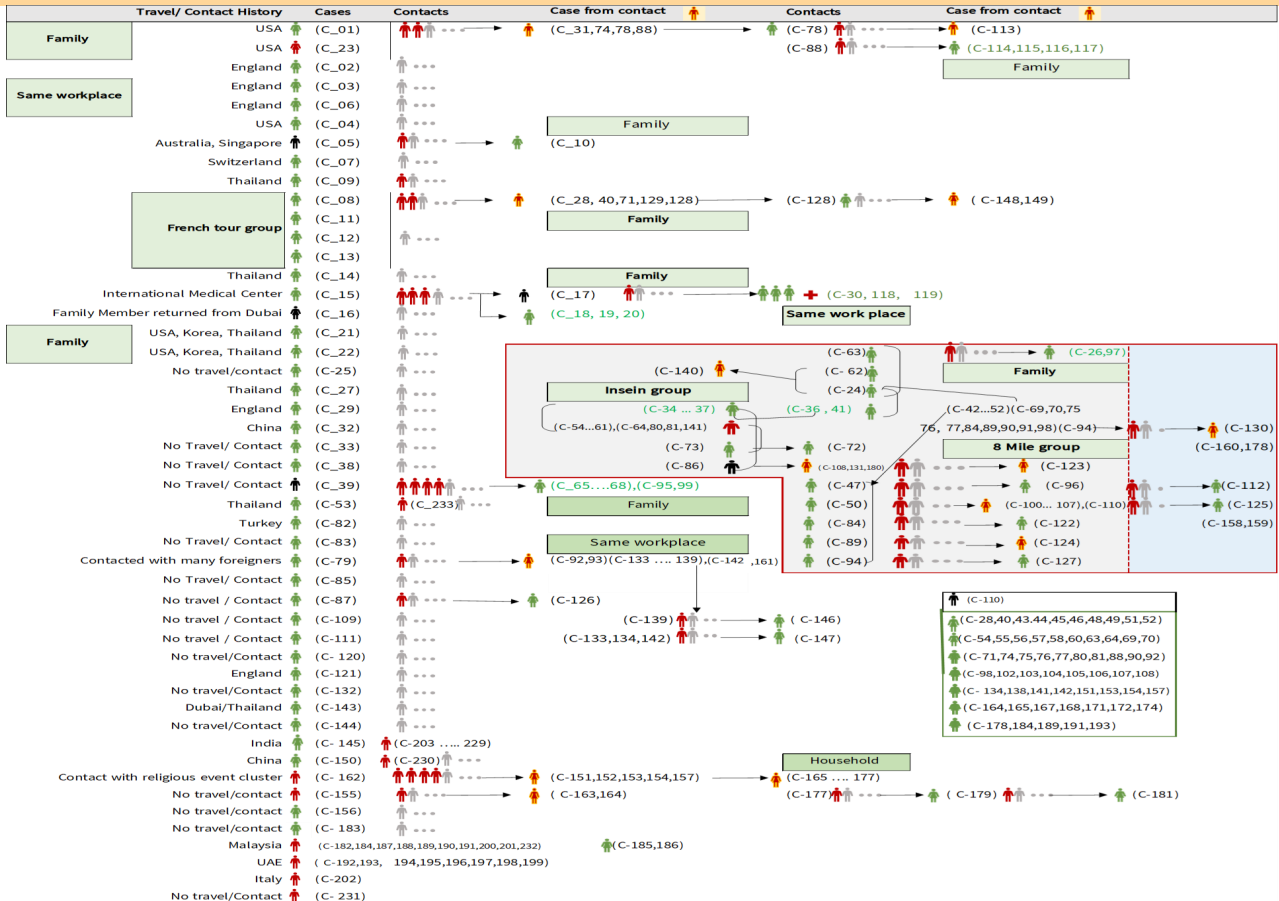
Total laboratory confirmed cases by date (as of 2.6.2020, 11:30 pm), n= 233



Cumulative Number of active confirmed cases, recovered and death (23.3.2020 – 2-6-2020), n (cumulative)=233



Summary of COVID-19 confirmed cases (as of 2-6-2020) , n (contacts)= 4,767

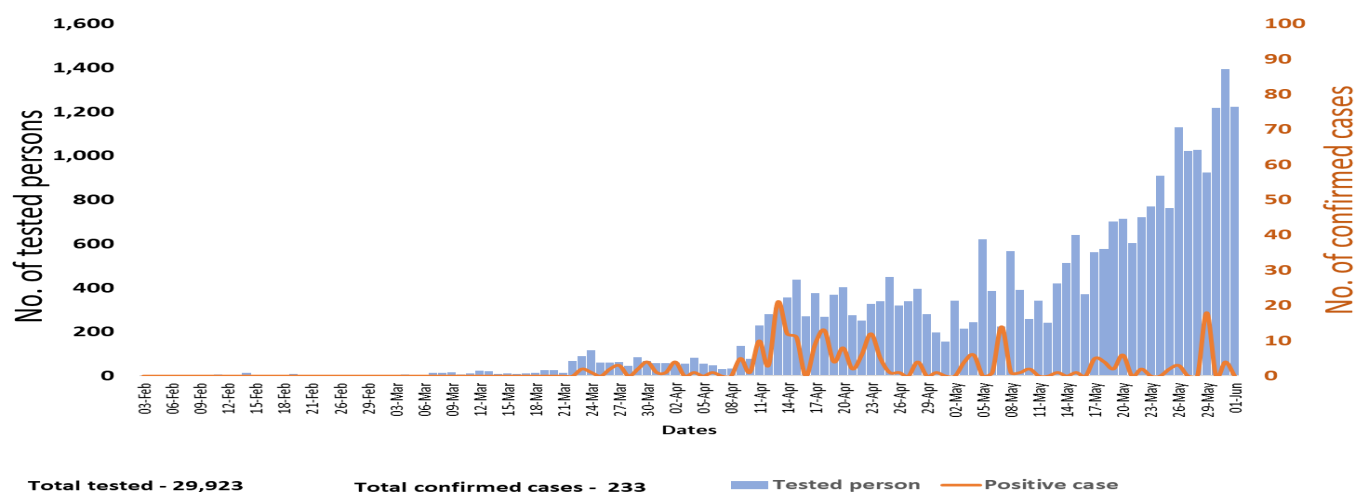


Summary of current situation

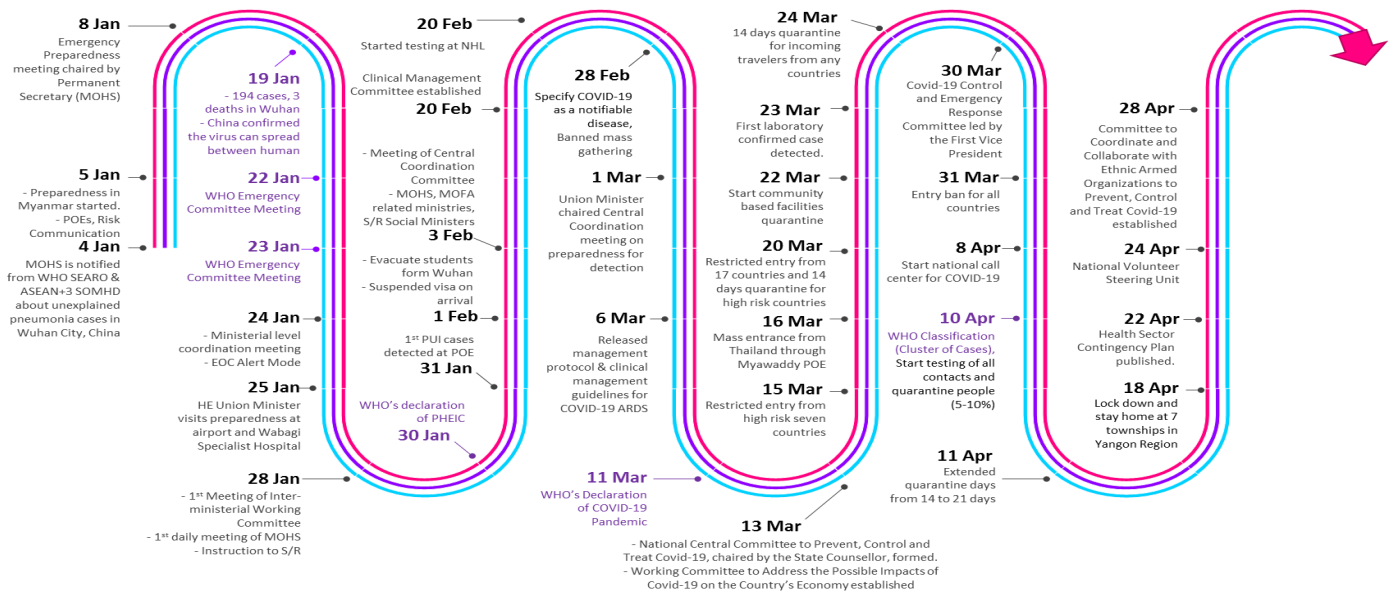
Type	New (31.5.2020-2.6.2020)	Total (on 2.6.2020)
Suspected and Person Under Investigation (PUI)	42	276
Hospital Quarantine	8	114
Facility Quarantine	2,441	49,493

Person under Investigation (PUI) by State/Region hospitals (31.1.2020 – 2.6.2020) n= 5,064			No. of Facility Quarantine sites and Quarantined people on 2.6.2020			
No.	State/Region	PUI	No.	State/Region	No. of facilities	Total no. of quarantine people
1.	Yangon	2,637	1.	Magway	2,866	10,861
2.	Mandalay	906	2.	Kachin	696	5,165
3.	Bago	187	3.	Bago	514	5049
4.	Kayin	176	4.	Sagaing	1856	4909
5.	Shan (N)	171	5.	Mandalay	636	4355
6.	Tanintharyi	168	6.	Rakhine	684	3289
7.	Shan (S)	166	7.	Ayeyarwaddy	865	2864
8.	Mon	105	8.	Yangon	68	2572
9.	Rakhine	99	9.	Kayin	328	2264
10.	Shan (E)	88	10.	Shan North	429	2149
11.	Ayeyarwaddy	74	11.	Mon	23	1424
12.	Magway	74	12.	Shan S	139	1388
13.	Sagaing	60	13.	Naypyitaw	19	1233
14.	Kayah	54	14.	Tanintharyi	189	1057
15.	Chin	50	15.	Shan East	11	405
16.	Naypyitaw	27	16.	Chin	45	312
17.	Kachin	22	17.	Kayah	18	197
Total		5,064	Total		9,386	49,493

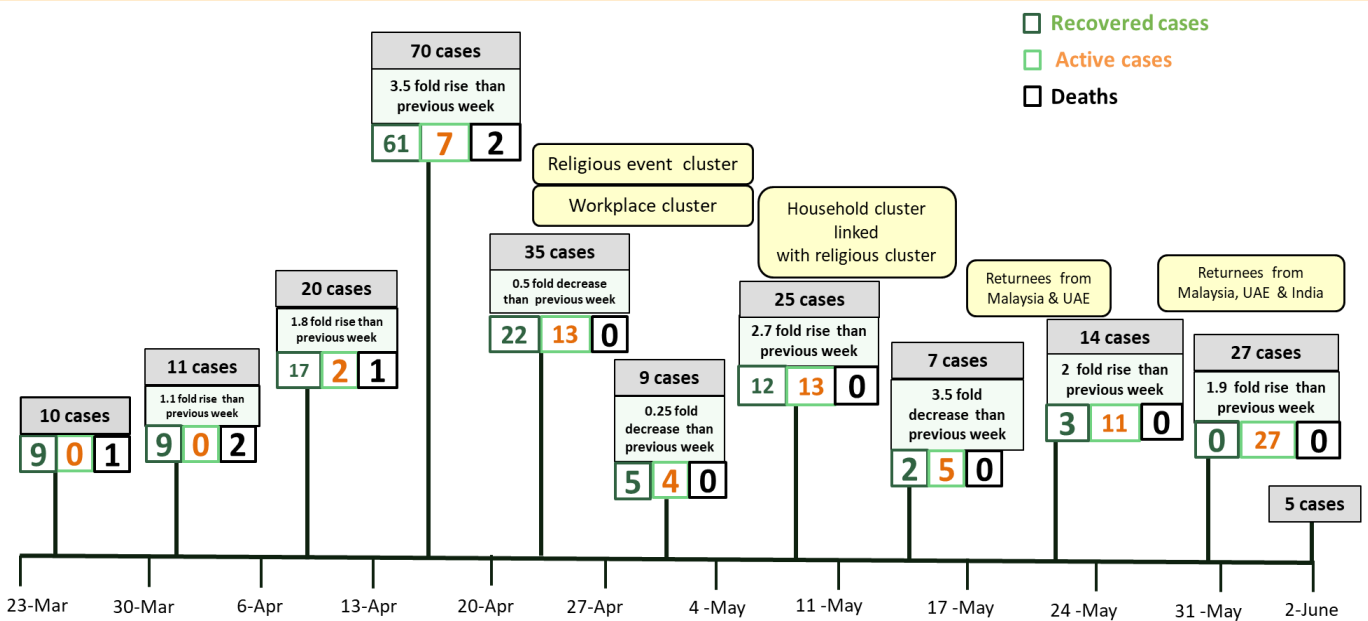
COVID-19 confirmed cases among tested by date (as of 2.6.2020)



Timeline of Preparedness and Response to COVID-19 in Myanmar (as of 3.6.2020)



Summary of new confirmed cases detection after first two cases (as of 2.6.2020)



- Confirmed cases were detected as peak in the 4th week after first confirmed cases due to religious event cluster.
- Confirmed cases were decreased but still raised than the first 3 weeks due to religious event cluster and workplace cluster.
- There was an increased in numbers of cases in the 7th week after the first two cases due to household cluster linked with religious cluster.
- Confirmed cases were detected by nearly two fold rise in the 9th and 10th weeks after first two cases because of returnees coming back by relief flights.