



Economic &

Social Affairs



# The World's Cities in 2016



United Nations

Data Booklet

# The World's Cities in 2016

In 2016, an estimated 54.5 per cent of the world's population lived in urban settlements. By 2030, urban areas are projected to house 60 per cent of people globally and one in every three people will live in cities with at least half a million inhabitants. Understanding the key trends in urbanization likely to unfold over the coming years is crucial to the implementation of the 2030 Agenda for Sustainable Development and for efforts to forge a new framework of urban development during the Habitat III conference scheduled to be held in Quito, Ecuador in October 2016.

This data booklet highlights current and future trajectories of populations in cities around the globe, drawing on population estimates and projections published in *World Urbanization Prospects: The 2014 Revision*. All information is available at [www.unpopulation.org](http://www.unpopulation.org).

**Suggested citation:** United Nations, Department of Economic and Social Affairs, Population Division (2016). *The World's Cities in 2016 – Data Booklet (ST/ESA/SER.A/392)*.

Cover photo: Copyright © UN Photo/Kibae Park



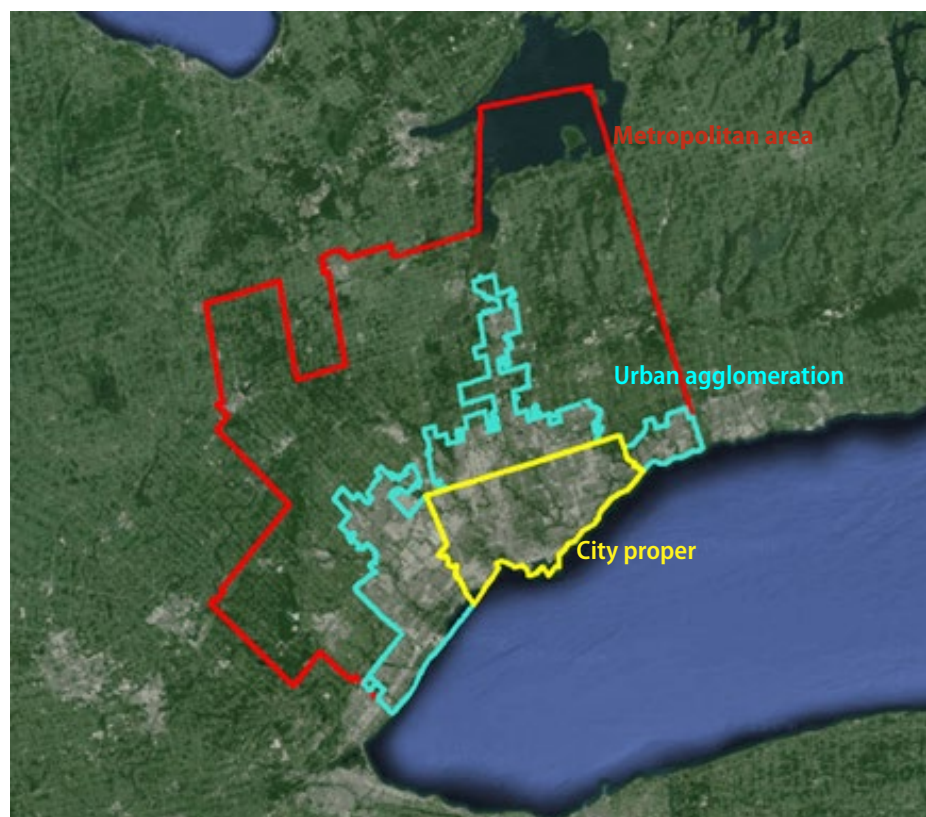
# What is a City?

Most people can agree that cities are places where large numbers of people live and work; they are hubs of government, commerce and transportation. But how best to define the geographical limits of a city is a matter of some debate. So far, no standardized international criteria exist for determining the boundaries of a city and often multiple different boundary definitions are available for any given city.

One type of definition, sometimes referred to as the “city proper”, describes a city according to an administrative boundary. A second approach, termed the “urban agglomeration”, considers the extent of the contiguous urban area, or built-up area, to delineate the city’s boundaries. A third concept of the city, the “metropolitan area”, defines its boundaries according to the degree of economic and social interconnectedness of nearby areas, identified by interlinked commerce or commuting patterns, for example.

The choice of how to define a city’s boundaries is consequential for assessing the size of its population. In Toronto, Canada, for example, approximately 2.6 million people resided within the “city proper” according to the 2011 census, but the population of the surrounding “urban agglomeration” was almost twice as large, at 5.1 million, and the population of the “metropolitan area” was larger still, at 5.6 million.\* Furthermore, rates of population growth differed across the three definitions. Between the 2006 and 2011 censuses, the population within Toronto’s “city proper” grew at an average annual rate of 0.9 per cent, compared to 1.5 per cent for the “urban agglomeration” and 1.8 per cent for the “metropolitan area”.

The 2014 revision of *World Urbanization Prospects* (WUP) endeavoured, wherever possible, given available data, to adhere to the “urban agglomeration” concept of cities. Very often, however, in order to compile a series of population estimates that was consistent for a city over time, the “city proper” or “metropolitan area” concepts were used instead. Of the 1,692 cities with at least 300,000 inhabitants in 2014 included in WUP, 55 per cent follow the “urban agglomeration” statistical concept, 35 per cent follow the “city proper” concept and the remaining 10 per cent refer to “metropolitan areas”.



\*The “city proper” described here corresponds to the Toronto “census subdivision – municipality” as defined in the 2011 Census of Canada; the “urban agglomeration” corresponds to the Toronto “population centre”; and the “metropolitan area” corresponds to the Toronto “census metropolitan area.” Population data and boundaries are from Statistics Canada (<http://www12.statcan.gc.ca/census-recensement/index-eng.cfm>). Satellite image is from Google Imagery TerraMetrics 2016.

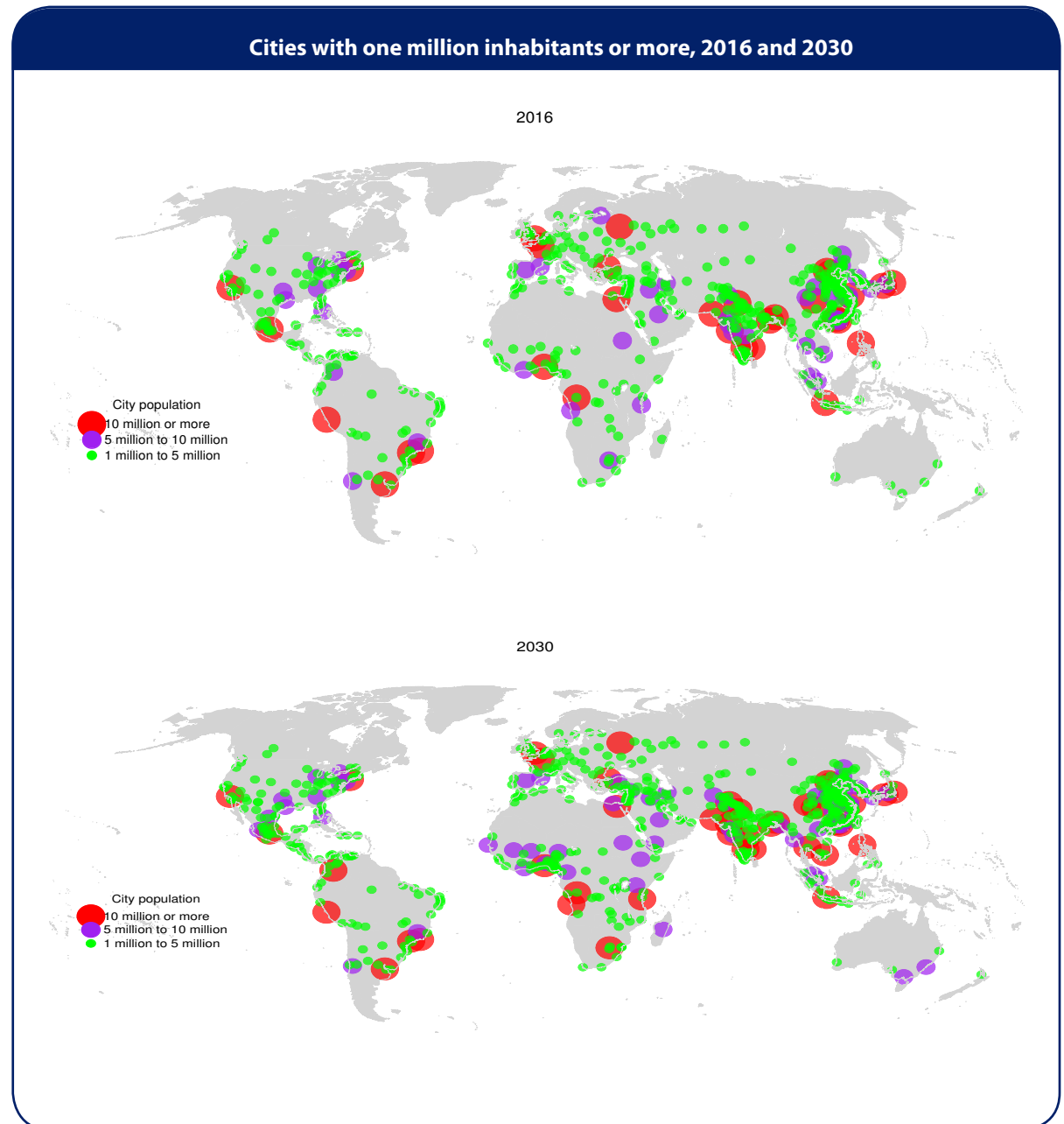
## The world's cities are growing in both size and number

In 2016, there were 512 cities with at least 1 million inhabitants globally. By 2030, a projected 662 cities will have at least 1 million residents.

Cities with more than 10 million inhabitants are often termed “megacities”. In 2016, there were 31 megacities globally and their number is projected to rise to 41 by 2030.

In 2016, 45 cities had populations between 5 and 10 million inhabitants. By 2030, 10 of these are projected to become megacities and the population of one (Saint Petersburg, Russian Federation) is expected to fall below 5 million. Projections indicate that 29 additional cities will cross the 5 million mark between 2016 and 2030, of which 15 are located in Asia and 10 in Africa. In 2030, 63 cities are projected to have between 5 and 10 million inhabitants.

An overwhelming majority of the world's cities have fewer than 5 million inhabitants. In 2016, there were 436 cities with between 1 and 5 million inhabitants and an additional 551 cities with between 500,000 and 1 million inhabitants. By 2030, the number of cities with 1 to 5 million inhabitants is projected to grow to 559 and 731 cities will have between 500,000 and 1 million inhabitants.



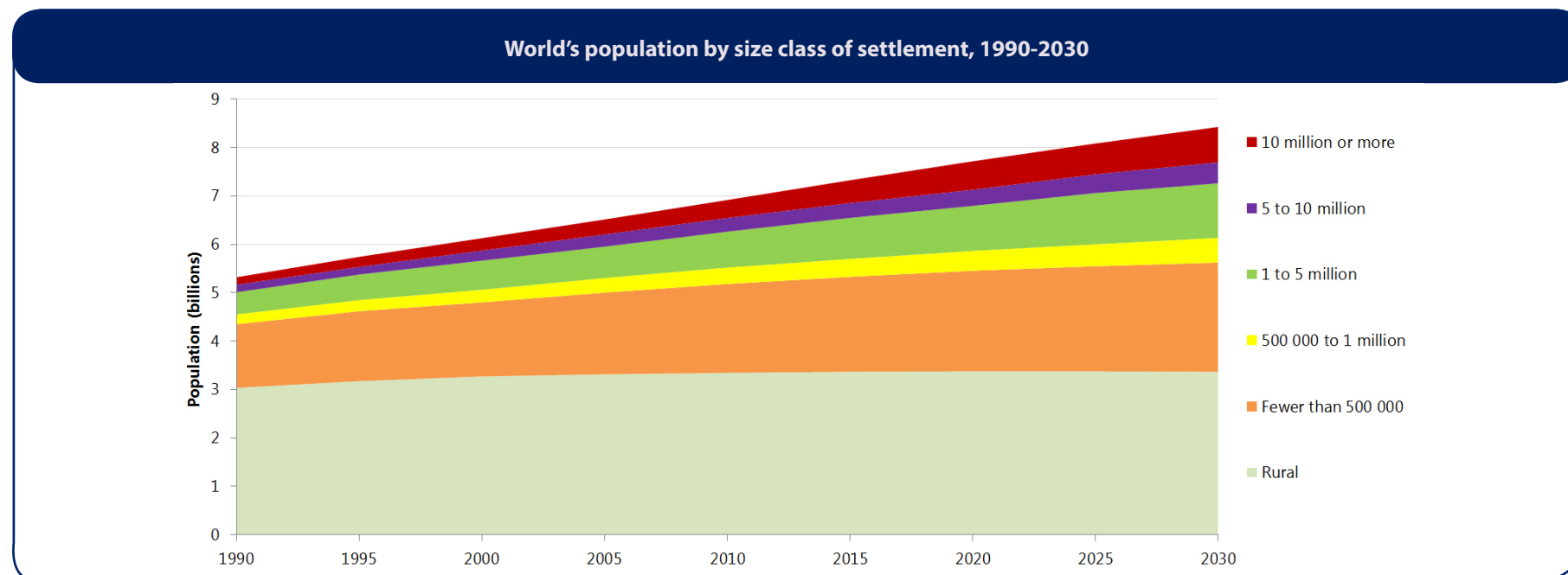
## One in five people worldwide lives in a city with more than 1 million inhabitants

In 2016, 1.7 billion people—23 per cent of the world’s population—lived in a city with at least 1 million inhabitants. By 2030, a projected 27 per cent of people worldwide will be concentrated in cities with at least 1 million inhabitants.

Between 2016 and 2030, the population in all city size classes is projected to increase, while the rural population is projected to decline slightly. While rural areas were home to more than 45 per cent of the world’s population in 2016, that proportion is expected to fall to 40 per cent by 2030.

A minority of people reside in megacities—500 million, representing 6.8 per cent of the global population in 2016. But, as these cities increase in both size and number, they will become home to a growing share of the population. By 2030, a projected 730 million people will live in cities with at least 10 million inhabitants, representing 8.7 per cent of people globally.

World's population by size class of settlement, 2016 and 2030						
	2016			2030		
	Number of settlements	Population (millions)	Percentage of world population	Number of settlements	Population (millions)	Percentage of world population
Urban	..	4 034	54.5	..	5 058	60.0
10 million or more	31	500	6.8	41	730	8.7
5 to 10 million	45	308	4.2	63	434	5.2
1 to 5 million	436	861	11.6	558	1 128	13.4
500 000 to 1 million	551	380	5.1	731	509	6.0
Fewer than 500 000	..	1 985	26.8	..	2 257	26.8
Rural	..	3 371	45.5	..	3 367	40.0



## Most megacities are located in the global South

Of the world's 31 megacities (that is, cities with 10 million inhabitants or more) in 2016, 24 are located in the less developed regions or the "global South". China alone was home to six megacities in 2016, while India had five.

The 10 cities that are projected to become megacities between 2016 and 2030 are all located in developing countries. They include:

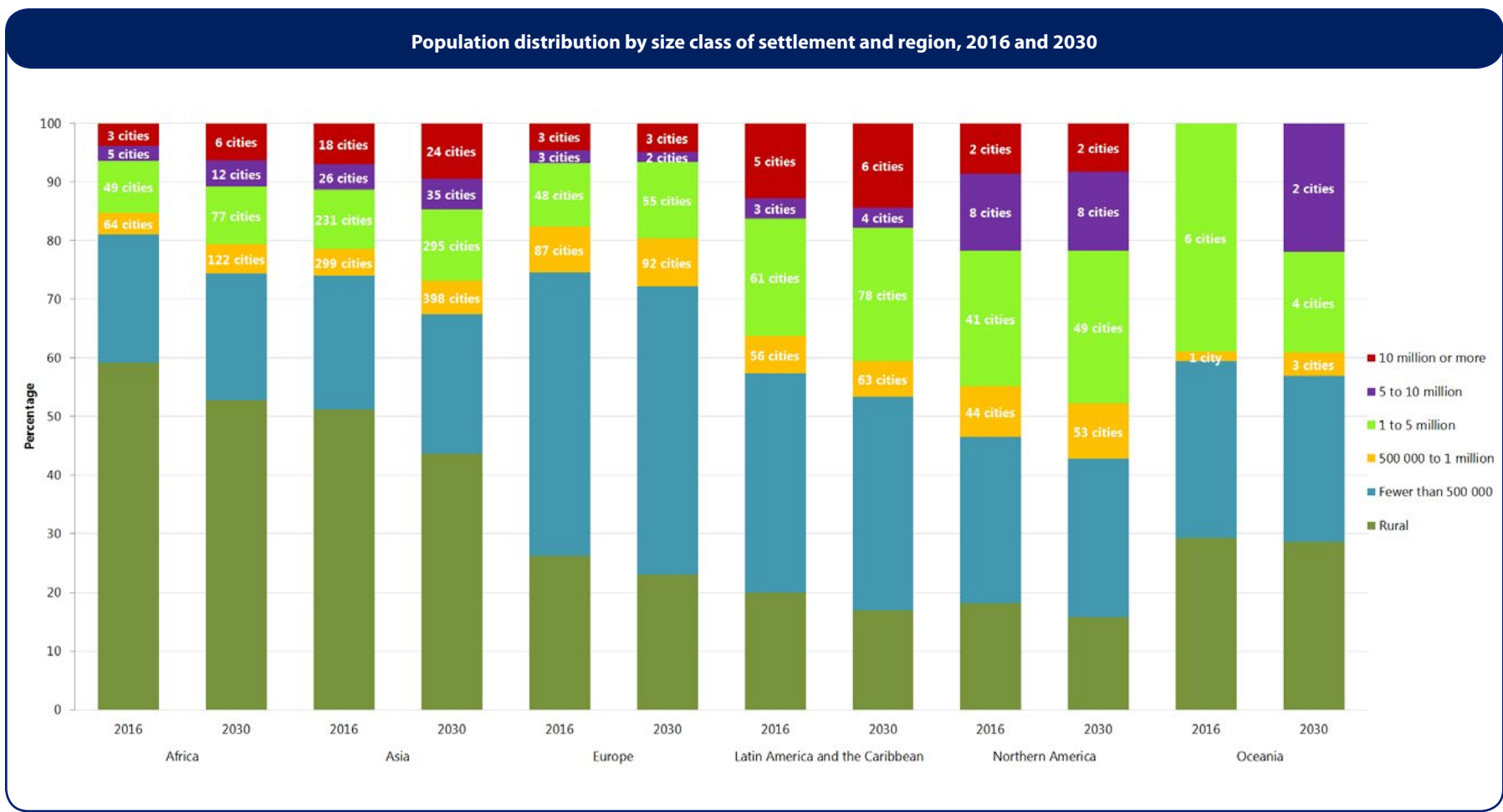
Lahore, Pakistan  
 Hyderabad, India  
 Bogotá, Colombia  
 Johannesburg, South Africa  
 Bangkok, Thailand  
 Dar es Salaam, Tanzania  
 Ahmanabad, India  
 Luanda, Angola  
 Ho Chi Minh City, Viet Nam  
 and Chungdu, China.

Despite a projected decline of nearly 1 million inhabitants, Tokyo is expected to remain the world's largest city in 2030, followed by Delhi, which is projected to add nearly 10 million people between 2016 and 2030.

Rank	City, Country	Population in 2016 (thousands)	City, Country	Population in 2030 (thousands)
1	Tokyo, Japan	38 140	Tokyo, Japan	37 190
2	Delhi, India	26 454	Delhi, India	36 060
3	Shanghai, China	24 484	Shanghai, China	30 751
4	Mumbai (Bombay), India	21 357	Mumbai (Bombay), India	27 797
5	São Paulo, Brazil	21 297	Beijing, China	27 706
6	Beijing, China	21 240	Dhaka, Bangladesh	27 374
7	Ciudad de México (Mexico City), Mexico	21 157	Karachi, Pakistan	24 838
8	Kinki M.M.A. (Osaka), Japan	20 337	Al-Qahirah (Cairo), Egypt	24 502
9	Al-Qahirah (Cairo), Egypt	19 128	Lagos, Nigeria	24 239
10	New York-Newark, USA	18 604	Ciudad de México (Mexico City), Mexico	23 865
11	Dhaka, Bangladesh	18 237	São Paulo, Brazil	23 444
12	Karachi, Pakistan	17 121	Kinshasa, Democratic Republic of the Congo	19 996
13	Buenos Aires, Argentina	15 334	Kinki M.M.A. (Osaka), Japan	19 976
14	Kolkata (Calcutta), India	14 980	New York-Newark, USA	19 885
15	Istanbul, Turkey	14 365	Kolkata (Calcutta), India	19 092
16	Chongqing, China	13 744	Guangzhou, Guangdong, China	17 574
17	Lagos, Nigeria	13 661	Chongqing, China	17 380
18	Manila, Philippines	13 131	Buenos Aires, Argentina	16 956
19	Guangzhou, Guangdong, China	13 070	Manila, Philippines	16 756
20	Rio de Janeiro, Brazil	12 981	Istanbul, Turkey	16 694
21	Los Angeles-Long Beach-Santa Ana, USA	12 317	Bangalore, India	14 762
22	Moskva (Moscow), Russian Federation	12 260	Tianjin, China	14 655
23	Kinshasa, Democratic Republic of the Congo	12 071	Rio de Janeiro, Brazil	14 174
24	Tianjin, China	11 558	Chennai (Madras), India	13 921
25	Paris, France	10 925	Jakarta, Indonesia	13 812
26	Shenzhen, China	10 828	Los Angeles-Long Beach-Santa Ana, USA	13 257
27	Jakarta, Indonesia	10 483	Lahore, Pakistan	13 033
28	Bangalore, India	10 456	Hyderabad, India	12 774
29	London, United Kingdom	10 434	Shenzhen, China	12 673
30	Chennai (Madras), India	10 163	Lima, Peru	12 221
31	Lima, Peru	10 072	Moskva (Moscow), Russian Federation	12 200
32			Bogotá, Colombia	11 966
33			Paris, France	11 803
34			Johannesburg, South Africa	11 573
35			Krung Thep (Bangkok), Thailand	11 528
36			London, United Kingdom	11 467
37			Dar es Salaam, United Republic of Tanzania	10 760
38			Ahmadabad, India	10 527
39			Luanda, Angola	10 429
40			Thành Phố Hồ Chí Minh (Ho Chi Minh City), Viet Nam	10 200
41			Chengdu, China	10 104

# The share of the population residing in cities is projected to increase in all regions

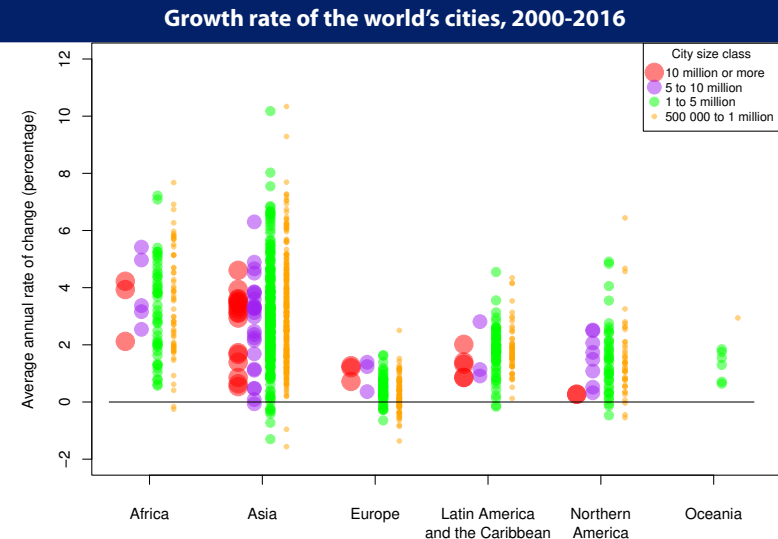
In Northern America, more than half of the population resided in cities with 500,000 inhabitants or more in 2016 and one in five people lived in a city of 5 million inhabitants or more. Latin America and the Caribbean is the region with the largest proportion of the population concentrated in megacities: of the total population of the region in 2016, 12.7 per cent resided in the five cities with 10 million inhabitants or more and the share in megacities is projected to rise to 14.3 per cent in 2030, as Bogotá crosses the 10 million threshold. In both Africa and Asia, more than half of the population lived in rural areas in 2016, but that share is declining. Between 2016 and 2030, the number of cities with 500,000 inhabitants or more is expected to grow by 80 per cent in Africa and by 30 per cent in Asia.



## Most of the world's fastest growing cities are located in Asia and Africa

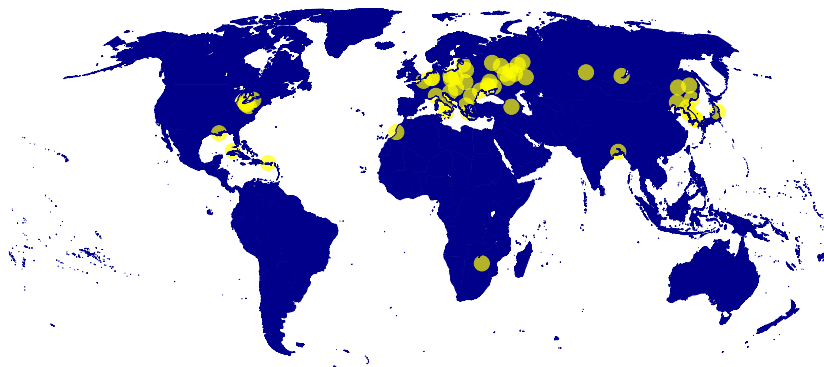
Between 2000 and 2016, the world's cities with 500,000 inhabitants or more grew at an average annual rate of 2.4 per cent. However, 47 of these cities grew more than twice as fast, with average growth in excess of 6 per cent per year. Of these, 6 are located in Africa, 40 in Asia (20 in China alone), and 1 in Northern America. Among the fastest growing cities, 31 (nearly two thirds) have a long history of rapid population growth, with average annual growth rates above 6 per cent for the period 1980-2000 as well.

None of the 47 fastest growing cities had a population greater than 5 million in 2000, only 4 had between 1 and 5 million inhabitants, and 43 had fewer than 1 million inhabitants.



## Fifty-five cities have experienced population decline since 2000\*

Cities where population declined between 2000 and 2016



\* Out of the 1,063 cities with 500,000 inhabitants or more in 2016.

Population decline in some cities occurred in response to a natural disaster. This has been the case in the United States city of New Orleans, which lost population after Hurricane Katrina in 2005, and in Sendai, Japan, following the 2011 earthquake and tsunami. Economic contraction has also contributed to population decline in places such as Buffalo and Detroit, concurrent with the loss of industry and jobs in those cities.

In most cases, however, city population decline has been associated not with crises, but rather with persistent low fertility rates, which have contributed to stagnating or declining total population sizes in some countries, particularly in Europe. The 55 cities with declining populations were home to 70 million people in 2016.



## In 28 countries or areas, more than 40 per cent of the urban population is concentrated in a single city of more than one million inhabitants

These “primate cities” include Hong Kong, Special Administrative Region (SAR) of China, with 7.4 million inhabitants in 2016, and Singapore, a city-state with 5.7 million inhabitants. An additional five cities concentrate more than 60 per cent of the urban population of their respective country or area, including Brazzaville (Congo), Kuwait City (Kuwait), Panama City (Panama), San Juan (Puerto Rico), and Ulaanbaatar (Mongolia).

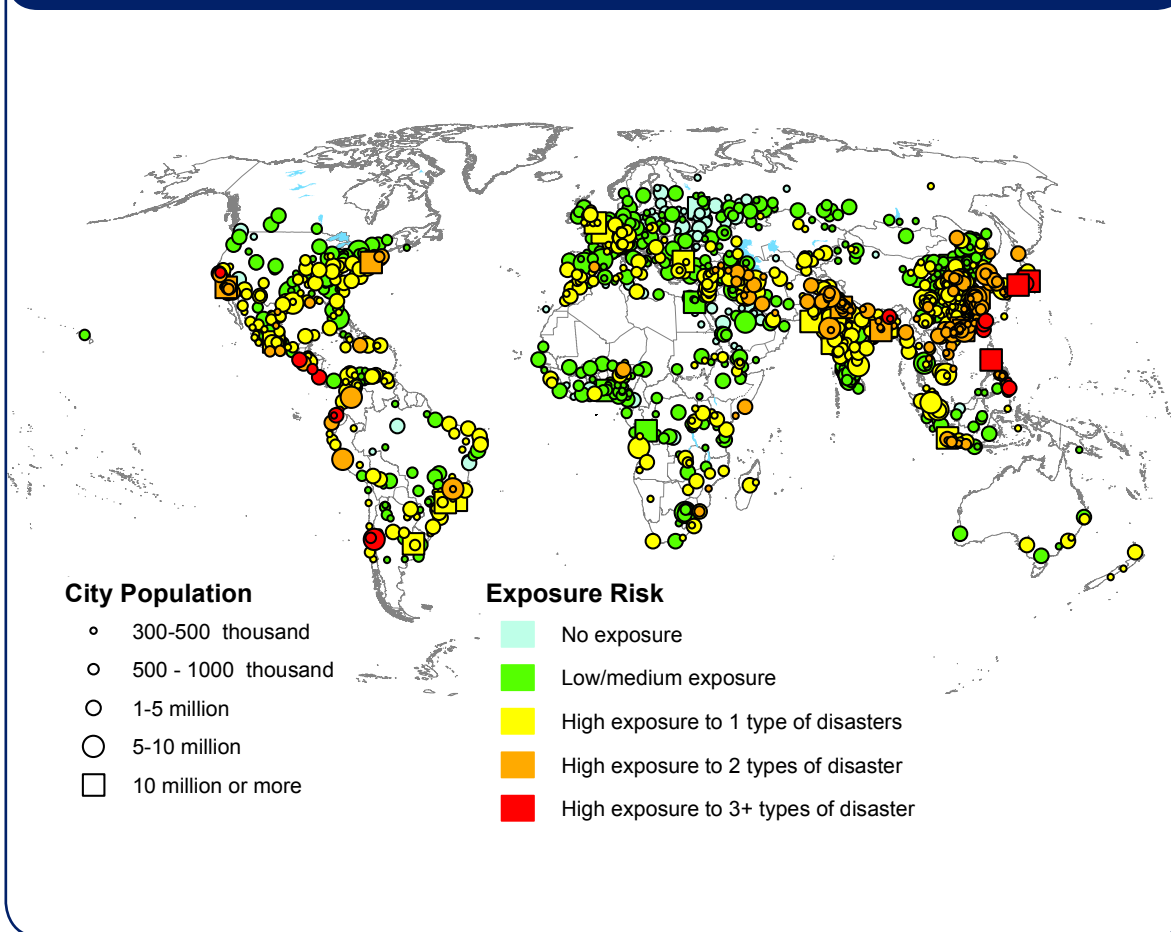
For just over half of primate cities, the share of the urban population concentrated in the city has increased over time. The proportion of Mongolia’s urban residents living in Ulaanbaatar, for example, rose from 56 per cent in 2000 to almost 66 per cent in 2016. The share of Georgia’s urban population residing in Tbilisi increased from 44 per cent in 2000 to nearly 50 per cent in 2016.

Some primate cities are experiencing a decline in their share of the urban population. Lisbon, for example, held close to 48 per cent of the urban population of Portugal in 2000, but 43 per cent in 2016. The proportion of Guinea’s urban dwellers residing in Conakry also declined from 45 per cent in 2000 to 42 per cent in 2016.

	Country or area	City	City population (thousands)		City population as a proportion of the urban population	
			2000	2016	2000	2016
1	China, Hong Kong SAR	Hong Kong	6 835	7 365	100	100
2	Singapore	Singapore	3 918	5 717	100	100
3	Kuwait	Al Kuwait (Kuwait City)	1 300	2 874	69.5	79.4
4	Puerto Rico	San Juan	2 508	2 460	70.0	71.5
5	Mongolia	Ulaanbaatar	765	1 421	55.9	65.8
6	Panama	Ciudad de Panamá (Panama City)	1 216	1 708	64.0	63.1
7	Congo	Brazzaville	1 022	1 949	55.7	61.9
8	Liberia	Monrovia	836	1 305	65.2	56.5
9	Paraguay	Asunción	1 499	2 406	50.6	56.2
10	Armenia	Yerevan	1 111	1 040	55.9	55.6
11	Afghanistan	Kabul	2 401	4 842	54.8	54.5
12	Angola	Luanda	2 591	5 737	57.4	54.4
13	Senegal	Dakar	2 029	3 653	51.0	53.9
14	Cambodia	Phnum Pénh (Phnom Penh)	1 149	1 779	50.6	53.3
15	Uruguay	Montevideo	1 600	1 716	52.4	52.2
16	Burkina Faso	Ouagadougou	921	2 923	44.5	51.7
17	Egypt	Al-Qahirah (Cairo)	13 626	19 128	48.1	51.5
18	Lebanon	Bayrut (Beirut)	1 487	2 263	53.4	50.7
19	Georgia	Tbilisi	1 100	1 145	44.0	49.7
20	Israel	Tel Aviv-Yafo (Tel Aviv-Jaffa)	2 739	3 661	49.9	49.5
21	Somalia	Muqdisho (Mogadishu)	1 201	2 265	48.9	49.4
22	Azerbaijan	Baku	1 806	2 429	43.3	45.6
23	Portugal	Lisboa (Lisbon)	2 672	2 902	47.7	42.7
24	Côte d’Ivoire	Abidjan	3 028	5 020	43.1	42.0
25	Guinea	Conakry	1 221	1 989	45.0	41.7
26	Chad	N’Djaména	703	1 310	39.2	41.3
27	Peru	Lima	7 293	10 072	38.4	40.4
28	Chile	Santiago	5 658	6 544	42.5	40.4

## Most cities are vulnerable to at least one type of natural disaster

Cities' risk of exposure to natural disasters



Of the 1,692 cities with at least 300,000 inhabitants in 2014, 944 (56 per cent) were at high risk of exposure to at least one of six types of natural disaster (cyclones, floods, droughts, earthquakes, landslides and volcano eruptions), based on evidence on the occurrence of natural disasters over the late twentieth century.\* Taken together, cities facing high risk of exposure to a natural disaster were home to 1.4 billion people in 2014.

Around 15 per cent of cities—most located along coastlines—were at high risk of exposure to two or more types of natural disaster; 27 cities—including the megacities Tokyo, Osaka and Manila—faced high risk of exposure to three or more types of disaster.

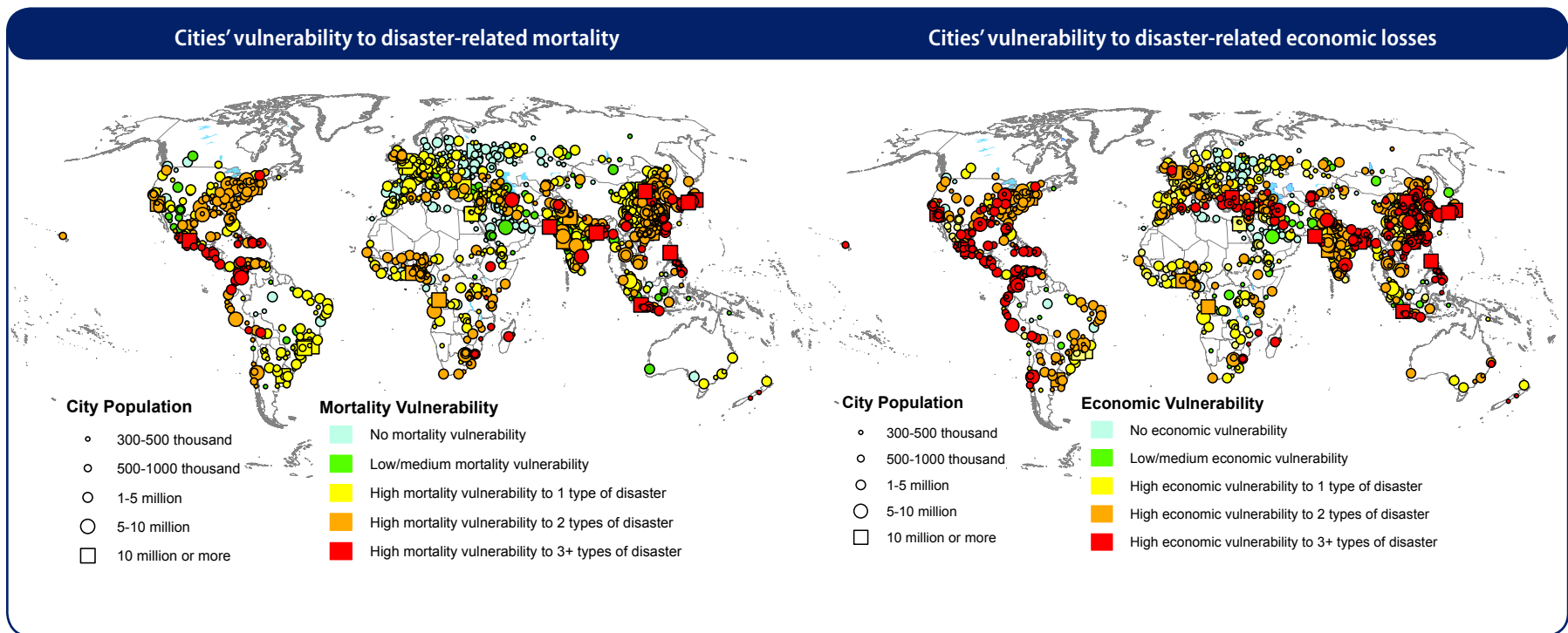
\* Results summarised here are from a 2015 United Nations technical paper that analysed city population estimates from the 2014 revision of World Urbanization Prospects together with spatial hotspot data on the risks of exposure and vulnerability to natural disasters produced by research institutes at Columbia University and the World Bank. The natural disaster data used in this analysis included historical information on the occurrence of six types of disaster, as well as their mortality and economic impacts. Data include cyclones occurring between 1980 and 2000; floods between 1985 and 2003; droughts between 1980 and 2000; earthquakes between 1976 and 2002; and landslides and volcano eruptions between 1979 and 2000. A city was classified as being at high risk of exposure or vulnerability to a particular type of natural disaster if its location intersected spatial grid cells ranking in the top three deciles of the global risk distribution in terms of the frequency of occurrence or mortality or economic impact of that specific type of natural disaster. For a complete description of the study and results see: Gu and others (2015) Risks of exposure and vulnerability to natural disasters at the city level: A global overview. Technical Paper No. 2015/2, Population Division, Department of Economic and Social Affairs, United Nations. Available from <http://esa.un.org/unpd/wup/Publications/Files/WUP2014-TechnicalPaper-NaturalDisaster.pdf>.

# A majority of city dwellers live in cities that face high risk of disaster-related mortality or economic losses

Some 82 per cent of cities—home to 1.9 billion people in 2014—were located in areas that faced high risk of mortality associated with natural disasters. Similarly, 89 per cent of cities—home to 2.1 billion people in 2014—were located in areas that were highly vulnerable to economic losses associated with at least one of the six types of natural disaster.

On average, cities in the less developed regions were at higher risk of exposure to natural disasters and were more vulnerable to disaster-related economic losses and mortality than those in the more developed regions. Moreover, larger cities tended to be at higher risk of exposure to disasters and more vulnerable to disaster-related economic losses and mortality compared to smaller cities.

Floods were the most common type of natural disaster affecting cities, followed by droughts and cyclones. These three types of disaster were also the most devastating for city dwellers globally in terms of the mortality and economic losses they caused.



The boundaries and names shown and the designations used on these maps do not imply official endorsement or acceptance by the United Nations. Dotted line represents approximately the Line of Control in Jammu and Kashmir agreed upon by India and Pakistan. The final status of Jammu and Kashmir has not yet been agreed upon by the parties. Final boundary between the Republic of Sudan and the Republic of South Sudan has not yet been determined.

Country or area	City	Statistical concept	City population (thousands)			Average annual rate of change (percentage)		City population as a proportion of the country or area's total or urban population in 2016 (percentage)	
			2000	2016	2030	2000-2016	2016-2030	Total population	Urban population
<b>Africa</b>									
<b>Eastern Africa</b>									
Ethiopia	Addis Ababa	City Proper	2 377	3 316	5 851	2.1	4.1	3.3	16.4
Kenya	Mombasa	City Proper	683	1 141	1 973	3.2	3.9	2.4	9.1
Kenya	Nairobi	City Proper	2 214	4 070	7 140	3.8	4.0	8.5	32.6
Madagascar	Antananarivo	Urban Agglomeration	1 361	2 739	5 073	4.4	4.4	11.0	30.8
Mozambique	Maputo	Urban Agglomeration	1 019	1 203	1 893	1.0	3.2	4.3	13.3
Rwanda	Kigali	Urban Agglomeration	578	1 293	2 268	5.0	4.0	10.1	34.0
Somalia	Muqdisho (Mogadishu)	Urban Agglomeration	1 201	2 265	4 176	4.0	4.4	19.8	49.4
Uganda	Kampala	Urban Agglomeration	1 097	2 012	3 939	3.8	4.8	4.9	29.5
United Republic of Tanzania	Dar es Salaam	Urban Agglomeration	2 272	5 409	10 760	5.4	4.9	10.0	31.1
Zambia	Lusaka	Urban Agglomeration	1 073	2 285	4 365	4.7	4.6	14.3	34.4
Zimbabwe	Harare	City Proper	1 379	1 511	2 048	0.6	2.2	9.8	30.2
<b>Middle Africa</b>									
Angola	Huambo	Urban Agglomeration	578	1 337	2 537	5.2	4.6	5.7	12.7
Angola	Luanda	Urban Agglomeration	2 591	5 737	10 429	5.0	4.3	24.4	54.4
Cameroon	Douala	Urban Agglomeration	1 490	3 051	4 774	4.5	3.2	12.7	23.2
Cameroon	Yaoundé	Urban Agglomeration	1 351	3 204	5 158	5.4	3.4	13.4	24.3
Chad	N'Djaména	City Proper	703	1 310	2 347	3.9	4.2	9.4	41.3
Congo	Brazzaville	City Proper	1 022	1 949	2 979	4.0	3.0	40.7	61.9
Dem. Republic of the Congo	Kananga	City Proper	604	1 219	2 053	4.4	3.7	1.7	3.9
Dem. Republic of the Congo	Kinshasa	Urban Agglomeration	6 140	12 071	19 996	4.2	3.6	16.5	38.4
Dem. Republic of the Congo	Kisangani	City Proper	586	1 079	1 786	3.8	3.6	1.5	3.4
Dem. Republic of the Congo	Lubumbashi	City Proper	1 089	2 097	3 489	4.1	3.6	2.9	6.7
Dem. Republic of the Congo	Mbuji-Mayi	City Proper	1 011	2 097	3 541	4.6	3.7	2.9	6.7
<b>Northern Africa</b>									
Algeria	El Djazaïr (Algiers)	Urban Agglomeration	2 141	2 632	3 405	1.3	1.8	6.4	8.9
Egypt	Al-Iskandariyah (Alexandria)	City Proper	3 546	4 863	6 313	2.0	1.9	5.7	13.1
Egypt	Al-Qahirah (Cairo)	Metropolitan area	13 626	19 128	24 502	2.1	1.8	22.2	51.5
Libya	Tarabulus (Tripoli)	City Proper	1 022	1 128	1 333	0.6	1.2	17.6	22.4

Country or area	City	Statistical Concepts	City population (thousands)			Average annual rate of change (percentage)		City population as a proportion of the total or urban population in 2016 (percentage)	
			2000	2016	2030	2000-2016	2016-2030	Total population	Urban population
Morocco	Dar-el-Beida (Casablanca)	Urban Agglomeration	3 134	3 544	4 361	0.8	1.5	10.3	17.0
Morocco	Fès	Urban Agglomeration	868	1 197	1 559	2.0	1.9	3.5	5.7
Morocco	Marrakech	City Proper	751	1 168	1 572	2.8	2.1	3.4	5.6
Morocco	Rabat	Urban Agglomeration	1 507	2 004	2 574	1.8	1.8	5.8	9.6
Morocco	Tanger	Urban Agglomeration	591	1 016	1 391	3.4	2.2	3.0	4.9
Sudan	Al-Khartum (Khartoum)	Urban Agglomeration	3 505	5 265	8 158	2.5	3.1	13.0	38.2
Tunisia	Tunis	Urban Agglomeration	1 769	2 010	2 347	0.8	1.1	17.7	26.4
<b>Southern Africa</b>									
South Africa	Cape Town	Urban Agglomeration	2 715	3 698	4 322	1.9	1.1	6.9	10.5
South Africa	Durban	Urban Agglomeration	2 370	2 914	3 349	1.3	1.0	5.4	8.3
South Africa	Johannesburg	Metropolitan area	5 605	9 616	11 573	3.4	1.3	17.9	27.4
South Africa	Port Elizabeth	Metropolitan area	958	1 186	1 390	1.3	1.1	2.2	3.4
South Africa	Pretoria	Urban Agglomeration	1 084	2 125	2 701	4.2	1.7	3.9	6.0
South Africa	Vereeniging	Urban Agglomeration	897	1 164	1 370	1.6	1.2	2.2	3.3
<b>Western Africa</b>									
Burkina Faso	Ouagadougou	City Proper	921	2 923	5 854	7.2	5.0	15.9	51.7
Côte d'Ivoire	Abidjan	Urban Agglomeration	3 028	5 020	7 773	3.2	3.1	23.0	42.0
Ghana	Accra	Metropolitan area	1 668	2 316	3 262	2.0	2.4	8.4	15.4
Ghana	Kumasi	Metropolitan area	1 187	2 718	4 215	5.2	3.1	9.9	18.1
Guinea	Conakry	Urban Agglomeration	1 221	1 989	3 134	3.0	3.2	15.7	41.7
Liberia	Monrovia	Urban Agglomeration	836	1 305	2 032	2.8	3.2	28.3	56.5
Mali	Bamako	City Proper	1 142	2 651	5 231	5.3	4.9	15.8	38.8
Niger	Niamey	City Proper	696	1 125	2 363	3.0	5.3	5.6	29.5
Nigeria	Abuja	Urban Agglomeration	833	2 586	4 913	7.1	4.6	1.4	2.8
Nigeria	Benin City	Urban Agglomeration	975	1 543	2 667	2.9	3.9	0.8	1.7
Nigeria	Ibadan	Urban Agglomeration	2 236	3 243	5 499	2.3	3.8	1.7	3.5
Nigeria	Kaduna	City Proper	881	1 064	1 748	1.2	3.5	0.6	1.2
Nigeria	Kano	Urban Agglomeration	2 602	3 676	6 198	2.2	3.7	1.9	4.0
Nigeria	Lagos	Urban Agglomeration	7 281	13 661	24 239	3.9	4.1	7.2	14.9
Nigeria	Onitsha	Urban Agglomeration	533	1 165	2 147	4.9	4.4	0.6	1.3

Country or area	City	Statistical Concepts	City population (thousands)			Average annual rate of change (percentage)		City population as a proportion of the country or area's total or urban population in 2016 (percentage)	
			2000	2016	2030	2000-2016	2016-2030	Total population	Urban population
Nigeria	Port Harcourt	Urban Agglomeration	1 091	2 465	4 562	5.1	4.4	1.3	2.7
Senegal	Dakar	Urban Agglomeration	2 029	3 653	6 046	3.7	3.6	23.7	53.9
Sierra Leone	Freetown	City Proper	690	1 029	1 470	2.5	2.5	16.0	39.7
Asia									
Eastern Asia									
China	Anshan	Urban Agglomeration	1 384	1 570	1 886	0.8	1.3	0.1	0.2
China	Anyang	Urban Agglomeration	548	1 191	1 633	4.9	2.2	0.1	0.1
China	Baoding	Urban Agglomeration	884	1 120	1 377	1.5	1.5	0.1	0.1
China	Baoji	Urban Agglomeration	638	1 028	1 329	3.0	1.8	0.1	0.1
China	Baotou	Urban Agglomeration	1 406	1 996	2 495	2.2	1.6	0.1	0.2
China	Beijing	Urban Agglomeration	10 162	21 240	27 706	4.6	1.9	1.5	2.7
China	Benxi	Urban Agglomeration	857	1 085	1 338	1.5	1.5	0.1	0.1
China	Changchun	Urban Agglomeration	2 730	3 835	4 742	2.1	1.5	0.3	0.5
China	Changsha	Urban Agglomeration	2 182	3 882	5 013	3.6	1.8	0.3	0.5
China	Changzhou, Jiangsu	Urban Agglomeration	1 478	2 653	3 381	3.7	1.7	0.2	0.3
China	Chaozhou	Urban Agglomeration	691	1 349	1 650	4.2	1.4	0.1	0.2
China	Chengdu	Urban Agglomeration	4 222	7 820	10 104	3.9	1.8	0.6	1.0
China	Chifeng	Urban Agglomeration	677	1 043	1 333	2.7	1.8	0.1	0.1
China	Chongqing	Urban Agglomeration	7 863	13 744	17 380	3.5	1.7	1.0	1.7
China	Cixi	Urban Agglomeration	650	1 356	1 829	4.6	2.1	0.1	0.2
China	Dalian	Urban Agglomeration	2 833	4 612	5 851	3.0	1.7	0.3	0.6
China	Daqing	Urban Agglomeration	1 082	1 661	2 113	2.7	1.7	0.1	0.2
China	Datong	Urban Agglomeration	1 049	1 567	1 988	2.5	1.7	0.1	0.2
China	Dongguan	Urban Agglomeration	3 631	7 469	8 701	4.5	1.1	0.5	0.9
China	Foshan	Urban Agglomeration	3 832	7 089	8 353	3.8	1.2	0.5	0.9
China	Fushun, Liaoning	Urban Agglomeration	1 358	1 295	1 508	-0.3	1.1	0.1	0.2
China	Fuzhou, Fujian	Urban Agglomeration	2 009	3 380	4 335	3.3	1.8	0.2	0.4
China	Guangzhou, Guangdong	Urban Agglomeration	7 330	13 070	17 574	3.6	2.1	0.9	1.6
China	Guilin	Urban Agglomeration	805	1 056	1 310	1.7	1.5	0.1	0.1
China	Guiyang	Urban Agglomeration	1 860	2 944	3 734	2.9	1.7	0.2	0.4
China	Guizhou	Urban Agglomeration	913	1 316	2 111	3.0	2.7	0.1	0.2

Country or area	City	Statistical Concepts	City population (thousands)			Average annual rate of change (percentage)		City population as a proportion of the total or urban population in 2016 (percentage)	
			2000	2016	2030	2000-2016	2016-2030	Total population	Urban population
China	Qingdao	Urban Agglomeration	2 940	4 686	5 920	2.9	1.7	0.3	0.6
China	Qinhuangdao	Urban Agglomeration	702	1 139	1 470	3.0	1.8	0.1	0.1
China	Qiqihaer	Urban Agglomeration	1 188	1 469	1 798	1.3	1.4	0.1	0.2
China	Quanzhou	Urban Agglomeration	728	1 447	1 928	4.3	2.0	0.1	0.2
China	Rizhao	Urban Agglomeration	613	1 096	1 441	3.6	2.0	0.1	0.1
China	Ruian	Urban Agglomeration	555	1 005	1 326	3.7	2.0	0.1	0.1
China	Shanghai	City Proper	13 959	24 484	30 751	3.5	1.6	1.7	3.1
China	Shantou	Urban Agglomeration	2 931	4 011	4 899	2.0	1.4	0.3	0.5
China	Shaoxing	Urban Agglomeration	1 124	2 151	2 841	4.1	2.0	0.2	0.3
China	Shenyang	Urban Agglomeration	4 562	6 438	7 911	2.2	1.5	0.5	0.8
China	Shenzhen	Urban Agglomeration	6 550	10 828	12 673	3.1	1.1	0.8	1.4
China	Shijiazhuang	Urban Agglomeration	1 914	3 370	4 362	3.5	1.8	0.2	0.4
China	Suqian	Urban Agglomeration	397	1 111	1 591	6.4	2.6	0.1	0.1
China	Suzhou, Jiangsu	Urban Agglomeration	2 112	5 788	8 098	6.3	2.4	0.4	0.7
China	Taian, Shandong	Urban Agglomeration	910	1 239	1 541	1.9	1.6	0.1	0.2
China	Taichung	Urban Agglomeration	978	1 241	1 528	1.5	1.5	0.1	0.2
China	Taipei	Urban Agglomeration	2 630	2 669	3 116	0.1	1.1	0.2	0.3
China	Taiyuan, Shanxi	Urban Agglomeration	2 503	3 549	4 396	2.2	1.5	0.3	0.4
China	Taizhou, Jiangsu	Urban Agglomeration	784	1 211	1 541	2.7	1.7	0.1	0.2
China	Taizhou, Zhejiang	City Proper	992	1 695	2 189	3.4	1.8	0.1	0.2
China	Tangshan, Hebei	Urban Agglomeration	1 418	2 853	3 801	4.4	2.0	0.2	0.4
China	Tianjin	Urban Agglomeration	6 670	11 558	14 655	3.4	1.7	0.8	1.4
China	Ürümqi (Wulumqi)	Urban Agglomeration	1 807	3 639	4 831	4.4	2.0	0.3	0.5
China	Weifang	Urban Agglomeration	1 235	2 269	2 973	3.8	1.9	0.2	0.3
China	Wenzhou	Urban Agglomeration	1 565	3 319	4 336	4.7	1.9	0.2	0.4
China	Wuhan	Urban Agglomeration	6 638	7 979	9 442	1.2	1.2	0.6	1.0
China	Wuhu, Anhui	Urban Agglomeration	634	1 495	2 074	5.4	2.3	0.1	0.2
China	Wuxi, Jiangsu	Urban Agglomeration	1 835	3 109	3 862	3.3	1.5	0.2	0.4
China	Xi'an, Shaanxi	Urban Agglomeration	3 690	6 220	7 904	3.3	1.7	0.4	0.8
China	Xiamen	Urban Agglomeration	1 416	4 738	6 911	7.5	2.7	0.3	0.6
China	Xiangtan, Hunan	Urban Agglomeration	698	1 032	1 311	2.4	1.7	0.1	0.1

Country or area	City	Statistical Concepts	City population (thousands)			Average annual rate of change (percentage)		City population as a proportion of the country or area's total or urban population in 2016 (percentage)	
			2000	2016	2030	2000-2016	2016-2030	Total population	Urban population
China	Xiangyang	Urban Agglomeration	1 202	1 554	1 907	1.6	1.5	0.1	0.2
China	Xining	Urban Agglomeration	844	1 359	1 750	3.0	1.8	0.1	0.2
China	Xinxiang	Urban Agglomeration	762	1 006	1 249	1.7	1.5	0.1	0.1
China	Xuzhou	Urban Agglomeration	1 367	1 956	2 445	2.2	1.6	0.1	0.2
China	Yancheng, Jiangsu	Urban Agglomeration	671	1 502	2 059	5.0	2.3	0.1	0.2
China	Yangzhou	Urban Agglomeration	1 217	1 803	2 269	2.5	1.6	0.1	0.2
China	Yantai	Urban Agglomeration	1 218	2 182	2 838	3.6	1.9	0.2	0.3
China	Yichang	Urban Agglomeration	692	1 310	1 743	4.0	2.0	0.1	0.2
China	Yinchuan	Urban Agglomeration	571	1 698	2 461	6.8	2.7	0.1	0.2
China	Yingkou	Urban Agglomeration	624	1 057	1 380	3.3	1.9	0.1	0.1
China	Yiwu	Urban Agglomeration	532	1 124	1 520	4.7	2.2	0.1	0.1
China	Zaozhuang	Urban Agglomeration	853	1 038	1 264	1.2	1.4	0.1	0.1
China	Zhanjiang	Urban Agglomeration	818	1 172	1 476	2.2	1.7	0.1	0.1
China	Zhengzhou	Urban Agglomeration	2 438	4 539	5 900	3.9	1.9	0.3	0.6
China	Zhenjiang, Jiangsu	Urban Agglomeration	743	1 070	1 349	2.3	1.7	0.1	0.1
China	Zhongshan	Urban Agglomeration	1 376	3 908	5 518	6.5	2.5	0.3	0.5
China	Zhuhai	Urban Agglomeration	1 004	1 578	2 003	2.8	1.7	0.1	0.2
China	Zhuzhou	Urban Agglomeration	819	1 100	1 369	1.8	1.6	0.1	0.1
China	Zibo	Urban Agglomeration	1 874	2 465	3 015	1.7	1.4	0.2	0.3
China, Hong Kong SAR	Hong Kong	Urban Agglomeration	6 835	7 365	7 885	0.5	0.5	100.0	100.0
Dem. People's Rep. of Korea	P'yongyang	City Proper	2 777	2 872	3 277	0.2	0.9	11.4	18.6
Japan	Chukyo M.M.A. (Nagoya)	Metropolitan area	8 740	9 434	9 304	0.5	-0.1	7.5	7.9
Japan	Hiroshima	Metropolitan area	2 044	2 180	2 213	0.4	0.1	1.7	1.8
Japan	Kinki M.M.A. (Osaka)	Metropolitan area	18 660	20 337	19 976	0.5	-0.1	16.1	17.1
Japan	Kitakyushu-Fukuoka M.M.A.	Metropolitan area	5 421	5 494	5 355	0.1	-0.2	4.3	4.6
Japan	Sapporo	Metropolitan area	2 508	2 564	2 542	0.1	-0.1	2.0	2.2
Japan	Sendai	Metropolitan area	2 184	2 071	2 012	-0.3	-0.2	1.6	1.7
Japan	Shizuoka-Hamamatsu M.M.A.	Metropolitan area	1 217	3 493	3 934	6.6	0.8	2.8	2.9
Japan	Tokyo	Metropolitan area	34 450	38 140	37 190	0.6	-0.2	30.1	32.1
Mongolia	Ulaanbaatar	City Proper	765	1 421	1 850	3.9	1.9	47.9	65.8
Republic of Korea	Busan	City Proper	3 594	3 200	3 264	-0.7	0.1	6.4	7.8



Country or area	City	Statistical Concepts	City population (thousands)			Average annual rate of change (percentage)		City population as a proportion of the country or area's total or urban population in 2016 (percentage)	
			2000	2016	2030	2000-2016	2016-2030	Total population	Urban population
Republic of Korea	Changwon	Urban Agglomeration	1 077	1 036	1 090	-0.2	0.4	2.1	2.5
Republic of Korea	Daegu	City Proper	2 323	2 241	2 328	-0.2	0.3	4.5	5.4
Republic of Korea	Daejeon	City Proper	1 354	1 578	1 711	1.0	0.6	3.2	3.8
Republic of Korea	Gwangju	City Proper	1 343	1 550	1 682	0.9	0.6	3.1	3.8
Republic of Korea	Incheon	City Proper	2 371	2 711	2 919	0.8	0.5	5.4	6.6
Republic of Korea	Seoul	City Proper	9 878	9 779	9 960	-0.1	0.1	19.6	23.7
Republic of Korea	Suwon	City Proper	932	1 106	1 195	1.1	0.6	2.2	2.7
Republic of Korea	Yongin	City Proper	376	1 090	1 325	6.7	1.4	2.2	2.6
<b>South-Central Asia</b>									
<b>Central Asia</b>									
Kazakhstan	Almaty	City Proper	1 160	1 535	1 730	1.8	0.9	9.1	17.0
Uzbekistan	Tashkent	City Proper	2 135	2 264	2 839	0.4	1.6	7.5	20.6
<b>Southern Asia</b>									
Afghanistan	Kabul	City Proper	2 401	4 842	8 280	4.4	3.8	14.8	54.5
Bangladesh	Chittagong	Metropolitan area	3 308	4 640	6 719	2.1	2.6	2.9	8.2
Bangladesh	Dhaka	Metropolitan area	10 285	18 237	27 374	3.6	2.9	11.2	32.1
Bangladesh	Khulna	Metropolitan area	1 247	1 013	1 336	-1.3	2.0	0.6	1.8
India	Agra	Urban Agglomeration	1 293	2 017	2 793	2.8	2.3	0.2	0.5
India	Ahmadabad	Urban Agglomeration	4 427	7 571	10 527	3.4	2.4	0.6	1.8
India	Aligarh	Urban Agglomeration	653	1 067	1 502	3.1	2.4	0.1	0.2
India	Allahabad	Urban Agglomeration	1 035	1 313	1 755	1.5	2.1	0.1	0.3
India	Amritsar	Urban Agglomeration	990	1 283	1 721	1.6	2.1	0.1	0.3
India	Asansol	Urban Agglomeration	1 065	1 330	1 768	1.4	2.0	0.1	0.3
India	Aurangabad	Urban Agglomeration	868	1 380	1 925	2.9	2.4	0.1	0.3
India	Bangalore	Urban Agglomeration	5 567	10 456	14 762	3.9	2.5	0.8	2.4
India	Bareilly	Urban Agglomeration	722	1 141	1 598	2.9	2.4	0.1	0.3
India	Bhopal	Urban Agglomeration	1 426	2 151	2 959	2.6	2.3	0.2	0.5
India	Bhubaneswar	Urban Agglomeration	637	1 026	1 439	3.0	2.4	0.1	0.2
India	Chandigarh	Urban Agglomeration	791	1 159	1 595	2.4	2.3	0.1	0.3
India	Chennai (Madras)	Urban Agglomeration	6 353	10 163	13 921	2.9	2.2	0.8	2.4

Country or area	City	Statistical Concepts	City population (thousands)			Average annual rate of change (percentage)		City population as a proportion of the country or area's total or urban population in 2016 (percentage)	
			2000	2016	2030	2000-2016	2016-2030	Total population	Urban population
India	Coimbatore	Urban Agglomeration	1 420	2 641	3 782	3.9	2.6	0.2	0.6
India	Delhi	Urban Agglomeration	15 732	26 454	36 060	3.2	2.2	2.0	6.2
India	Dhanbad	Urban Agglomeration	1 046	1 269	1 680	1.2	2.0	0.1	0.3
India	Durg-Bhilainagar	Urban Agglomeration	905	1 144	1 529	1.5	2.1	0.1	0.3
India	Guwahati (Gauhati)	Urban Agglomeration	797	1 059	1 430	1.8	2.1	0.1	0.2
India	Gwalior	Urban Agglomeration	855	1 248	1 718	2.4	2.3	0.1	0.3
India	Hubli-Dharwad	City Proper	776	1 037	1 405	1.8	2.2	0.1	0.2
India	Hyderabad	Urban Agglomeration	5 445	9 218	12 774	3.3	2.3	0.7	2.1
India	Indore	Urban Agglomeration	1 597	2 503	3 459	2.8	2.3	0.2	0.6
India	Jabalpur	Urban Agglomeration	1 100	1 352	1 795	1.3	2.0	0.1	0.3
India	Jaipur	Urban Agglomeration	2 259	3 549	4 885	2.8	2.3	0.3	0.8
India	Jamshedpur	Urban Agglomeration	1 081	1 477	2 000	2.0	2.2	0.1	0.3
India	Jodhpur	Urban Agglomeration	842	1 318	1 837	2.8	2.4	0.1	0.3
India	Kannur	Urban Agglomeration	837	2 278	3 513	6.3	3.1	0.2	0.5
India	Kanpur	Urban Agglomeration	2 641	3 044	3 950	0.9	1.9	0.2	0.7
India	Kochi (Cochin)	Urban Agglomeration	1 523	2 484	3 465	3.1	2.4	0.2	0.6
India	Kolkata (Calcutta)	Urban Agglomeration	13 058	14 980	19 092	0.9	1.7	1.2	3.5
India	Kollam	Urban Agglomeration	611	1 482	2 246	5.5	3.0	0.1	0.3
India	Kota	Urban Agglomeration	692	1 200	1 710	3.4	2.5	0.1	0.3
India	Kozhikode (Calicut)	Urban Agglomeration	1 237	2 582	3 776	4.6	2.7	0.2	0.6
India	Lucknow	Urban Agglomeration	2 221	3 295	4 493	2.5	2.2	0.3	0.8
India	Ludhiana	Urban Agglomeration	1 368	1 739	2 316	1.5	2.0	0.1	0.4
India	Madurai	Urban Agglomeration	1 187	1 623	2 201	2.0	2.2	0.1	0.4
India	Malappuram	Urban Agglomeration	875	2 342	3 600	6.2	3.1	0.2	0.5
India	Meerut	Urban Agglomeration	1 143	1 579	2 140	2.0	2.2	0.1	0.4
India	Moradabad	Urban Agglomeration	626	1 054	1 493	3.3	2.5	0.1	0.2
India	Mumbai (Bombay)	Urban Agglomeration	16 367	21 357	27 797	1.7	1.9	1.6	5.0
India	Mysore	Urban Agglomeration	776	1 105	1 515	2.2	2.3	0.1	0.3
India	Nagpur	Urban Agglomeration	2 089	2 715	3 616	1.6	2.0	0.2	0.6
India	Nashik	Urban Agglomeration	1 117	1 829	2 556	3.1	2.4	0.1	0.4
India	Patna	Urban Agglomeration	1 658	2 247	3 016	1.9	2.1	0.2	0.5

Country or area	City	Statistical Concepts	City population (thousands)			Average annual rate of change (percentage)		City population as a proportion of the total or urban population in 2016 (percentage)	
			2000	2016	2030	2000-2016	2016-2030	Total population	Urban population
India	Pune (Poona)	Urban Agglomeration	3 655	5 882	8 091	3.0	2.3	0.5	1.4
India	Raipur	Urban Agglomeration	680	1 433	2 116	4.7	2.8	0.1	0.3
India	Rajkot	Urban Agglomeration	974	1 647	2 322	3.3	2.5	0.1	0.4
India	Ranchi	Urban Agglomeration	844	1 293	1 793	2.7	2.3	0.1	0.3
India	Salem	Urban Agglomeration	736	1 022	1 394	2.1	2.2	0.1	0.2
India	Srinagar	Urban Agglomeration	954	1 464	2 030	2.7	2.3	0.1	0.3
India	Surat	Urban Agglomeration	2 699	5 902	8 616	4.9	2.7	0.5	1.4
India	Thiruvananthapuram	Urban Agglomeration	1 153	2 029	2 878	3.5	2.5	0.2	0.5
India	Thrissur	Urban Agglomeration	1 050	2 443	3 651	5.3	2.9	0.2	0.6
India	Tiruchirappalli	Urban Agglomeration	837	1 125	1 525	1.8	2.2	0.1	0.3
India	Tiruppur	Urban Agglomeration	523	1 295	1 974	5.7	3.0	0.1	0.3
India	Vadodara	Urban Agglomeration	1 465	2 011	2 716	2.0	2.1	0.2	0.5
India	Varanasi (Benares)	Urban Agglomeration	1 199	1 566	2 102	1.7	2.1	0.1	0.4
India	Vijayawada	Urban Agglomeration	999	1 822	2 614	3.8	2.6	0.1	0.4
India	Visakhapatnam	Urban Agglomeration	1 309	1 982	2 733	2.6	2.3	0.2	0.5
Iran (Islamic Republic of)	Ahvaz	City Proper	868	1 245	1 575	2.3	1.7	1.5	2.1
Iran (Islamic Republic of)	Esfahan	City Proper	1 382	1 915	2 364	2.0	1.5	2.4	3.2
Iran (Islamic Republic of)	Karaj	City Proper	1 087	1 861	2 386	3.4	1.8	2.3	3.1
Iran (Islamic Republic of)	Mashhad	City Proper	2 073	3 088	3 863	2.5	1.6	3.8	5.2
Iran (Islamic Republic of)	Qom	City Proper	843	1 234	1 568	2.4	1.7	1.5	2.1
Iran (Islamic Republic of)	Shiraz	City Proper	1 115	1 716	2 233	2.7	1.9	2.1	2.9
Iran (Islamic Republic of)	Tabriz	City Proper	1 264	1 594	1 943	1.4	1.4	2.0	2.7
Iran (Islamic Republic of)	Tehran	City Proper	7 128	8 516	9 990	1.1	1.1	10.6	14.3
Nepal	Kathmandu	City Proper	644	1 224	1 855	4.0	3.0	4.3	22.4
Pakistan	Faisalabad	Urban Agglomeration	2 142	3 677	5 419	3.4	2.8	1.9	4.9
Pakistan	Gujranwala	Urban Agglomeration	1 226	2 193	3 274	3.6	2.9	1.1	2.9
Pakistan	Hyderabad	Urban Agglomeration	1 221	1 812	2 613	2.5	2.6	0.9	2.4
Pakistan	Islamabad	City Proper	597	1 433	2 275	5.5	3.3	0.7	1.9
Pakistan	Karachi	Urban Agglomeration	10 032	17 121	24 838	3.3	2.7	9.0	22.8
Pakistan	Lahore	Urban Agglomeration	5 452	8 990	13 033	3.1	2.7	4.7	12.0

Country or area	City	Statistical Concepts	City population (thousands)			Average annual rate of change (percentage)		City population as a proportion of the country or area's total or urban population in 2016 (percentage)	
			2000	2016	2030	2000-2016	2016-2030	Total population	Urban population
Pakistan	Multan	Urban Agglomeration	1 263	1 969	2 866	2.8	2.7	1.0	2.6
Pakistan	Peshawar	Urban Agglomeration	1 066	1 787	2 640	3.2	2.8	0.9	2.4
Pakistan	Quetta	Urban Agglomeration	615	1 148	1 740	3.9	3.0	0.6	1.5
Pakistan	Rawalpindi	Urban Agglomeration	1 521	2 582	3 809	3.3	2.8	1.4	3.4
<b>South-Eastern Asia</b>									
Cambodia	Phnum Pénh (Phnom Penh)	Urban Agglomeration	1 149	1 779	2 584	2.7	2.7	11.2	53.3
Indonesia	Bandung	City Proper	2 138	2 578	3 433	1.2	2.0	1.0	1.8
Indonesia	Batam	City Proper	415	1 498	2 486	8.0	3.6	0.6	1.1
Indonesia	Bogor	City Proper	751	1 102	1 541	2.4	2.4	0.4	0.8
Indonesia	Denpasar	City Proper	409	1 177	1 870	6.6	3.3	0.5	0.8
Indonesia	Jakarta	City Proper	8 390	10 483	13 812	1.4	2.0	4.1	7.4
Indonesia	Makassar (Ujung Pandang)	City Proper	1 077	1 522	2 104	2.2	2.3	0.6	1.1
Indonesia	Medan	City Proper	1 912	2 230	2 955	1.0	2.0	0.9	1.6
Indonesia	Palembang	City Proper	1 459	1 460	1 888	0.0	1.8	0.6	1.0
Indonesia	Pekan Baru	City Proper	588	1 168	1 731	4.3	2.8	0.5	0.8
Indonesia	Semarang	City Proper	1 427	1 648	2 188	0.9	2.0	0.6	1.2
Indonesia	Surabaya	City Proper	2 611	2 878	3 760	0.6	1.9	1.1	2.0
Lao People's Dem. Republic	Vientiane	Urban Agglomeration	442	1 050	1 782	5.4	3.8	14.7	37.0
Malaysia	Kuala Lumpur	Metropolitan area	4 176	7 047	9 423	3.3	2.1	22.7	30.1
Myanmar	Mandalay	Urban Agglomeration	810	1 196	1 654	2.4	2.3	2.2	6.3
Myanmar	Nay Pyi Taw	City Proper	—	1 045	1 398	..	2.1	1.9	5.5
Myanmar	Yangon	Urban Agglomeration	3 553	4 904	6 578	2.0	2.1	9.0	25.9
Philippines	Davao City	City Proper	1 152	1 662	2 216	2.3	2.1	1.6	3.6
Philippines	Manila	Urban Agglomeration	9 962	13 131	16 756	1.7	1.7	12.7	28.6
Singapore	Singapore	Urban Agglomeration	3 918	5 717	6 578	2.4	1.0	100.0	100.0
Thailand	Krung Thep (Bangkok)	Metropolitan area	6 360	9 444	11 528	2.5	1.4	14.0	27.1
Thailand	Samut Prakan	City Proper	389	1 980	3 139	10.2	3.3	2.9	5.7
Viet Nam	Can Tho	City Proper	439	1 242	1 902	6.5	3.0	1.3	3.9
Viet Nam	Hà Nội	Urban Agglomeration	1 660	3 790	5 498	5.2	2.7	4.0	11.8
Viet Nam	Hai Phòng	Urban Agglomeration	599	1 110	1 569	3.9	2.5	1.2	3.4
Viet Nam	Thành Phố Hồ Chí Minh (Ho Chi Minh City)	Urban Agglomeration	4 389	7 498	10 200	3.3	2.2	8.0	23.3

Country or area	City	Statistical Concepts	City population (thousands)			Average annual rate of change (percentage)		City population as a proportion of the country or area's total or urban population in 2016 (percentage)	
			2000	2016	2030	2000-2016	2016-2030	Total population	Urban population
<b>Western Asia</b>									
Armenia	Yerevan	City Proper	1 111	1 040	1 057	-0.4	0.1	34.8	55.6
Azerbaijan	Baku	Urban Agglomeration	1 806	2 429	2 971	1.9	1.4	25.0	45.6
Georgia	Tbilisi	City Proper	1 100	1 145	1 119	0.3	-0.2	26.7	49.7
Iraq	Al-Basrah (Basra)	City Proper	759	1 041	1 491	2.0	2.6	2.8	4.1
Iraq	Al-Mawsil (Mosul)	Urban Agglomeration	1 056	1 749	2 586	3.2	2.8	4.8	6.8
Iraq	Baghdad	Metropolitan area	5 200	6 811	9 710	1.7	2.5	18.5	26.6
Iraq	Irbil (Erbil)	City Proper	757	1 200	1 766	2.9	2.8	3.3	4.7
Iraq	Sulaimaniya	Urban Agglomeration	580	1 041	1 571	3.7	2.9	2.8	4.1
Israel	Hefa (Haifa)	Metropolitan area	905	1 105	1 314	1.2	1.2	13.8	14.9
Israel	Tel Aviv-Yafo (Tel Aviv-Jaffa)	Metropolitan area	2 739	3 661	4 382	1.8	1.3	45.6	49.5
Jordan	Amman	City Proper	1 017	1 159	1 355	0.8	1.1	14.8	17.7
Kuwait	Al Kuwait (Kuwait City)	City Proper	1 300	2 874	3 915	5.0	2.2	78.1	79.4
Lebanon	Bayrut (Beirut)	Urban Agglomeration	1 487	2 263	2 437	2.6	0.5	44.6	50.7
Saudi Arabia	Ad-Dammam	City Proper	639	1 085	1 321	3.3	1.4	3.6	4.3
Saudi Arabia	Al-Madinah (Medina)	City Proper	795	1 303	1 570	3.1	1.3	4.3	5.1
Saudi Arabia	Ar-Riyadh (Riyadh)	City Proper	3 567	6 540	7 940	3.8	1.4	21.5	25.8
Saudi Arabia	Jiddah	City Proper	2 509	4 161	4 988	3.2	1.3	13.7	16.4
Saudi Arabia	Makkah (Mecca)	City Proper	1 168	1 799	2 146	2.7	1.3	5.9	7.1
Syrian Arab Republic	Dimashq (Damascus)	Urban Agglomeration	2 017	2 586	3 451	1.6	2.1	11.4	19.6
Syrian Arab Republic	Halab (Aleppo)	Urban Agglomeration	2 204	3 641	5 087	3.1	2.4	16.0	27.5
Syrian Arab Republic	Hamah	Urban Agglomeration	495	1 297	2 003	6.0	3.1	5.7	9.8
Syrian Arab Republic	Hims (Homs)	Urban Agglomeration	856	1 695	2 471	4.3	2.7	7.4	12.8
Turkey	Adana	Urban Agglomeration	1 123	1 879	2 351	3.2	1.6	2.4	3.3
Turkey	Ankara	Urban Agglomeration	3 179	4 852	5 875	2.6	1.4	6.3	8.5
Turkey	Antalya	City Proper	595	1 100	1 381	3.8	1.6	1.4	1.9
Turkey	Bursa	Urban Agglomeration	1 180	1 974	2 465	3.2	1.6	2.5	3.4
Turkey	Gaziantep	Urban Agglomeration	844	1 567	1 955	3.9	1.6	2.0	2.7
Turkey	Istanbul	Urban Agglomeration	8 744	14 365	16 694	3.1	1.1	18.5	25.1
Turkey	Izmir	Urban Agglomeration	2 216	3 090	3 701	2.1	1.3	4.0	5.4
Turkey	Konya	Urban Agglomeration	734	1 226	1 542	3.2	1.6	1.6	2.1

Country or area	City	Statistical Concepts	City population (thousands)			Average annual rate of change (percentage)		City population as a proportion of the country or area's total or urban population in 2016 (percentage)	
			2000	2016	2030	2000-2016	2016-2030	Total population	Urban population
United Arab Emirates	Abu Zaby (Abu Dhabi)	City Proper	505	1 179	1 608	5.3	2.2	12.1	14.1
United Arab Emirates	Dubayy (Dubai)	Urban Agglomeration	907	2 504	3 471	6.3	2.3	25.7	29.9
United Arab Emirates	Sharjah	City Proper	445	1 332	1 890	6.9	2.5	13.7	15.9
Yemen	Sana'a'	Urban Agglomeration	1 347	3 094	5 071	5.2	3.5	11.9	33.7
<b>Europe</b>									
<b>Eastern Europe</b>									
Belarus	Minsk	Urban Agglomeration	1 700	1 925	1 942	0.8	0.1	20.9	27.1
Bulgaria	Sofia	Urban Agglomeration	1 128	1 230	1 230	0.5	0.0	17.4	23.5
Czech Republic	Praha (Prague)	City Proper	1 172	1 324	1 437	0.8	0.6	12.2	16.8
Hungary	Budapest	City Proper	1 787	1 712	1 811	-0.3	0.4	17.3	24.2
Poland	Warszawa (Warsaw)	City Proper	1 666	1 727	1 791	0.2	0.3	4.5	7.5
Romania	Bucuresti (Bucharest)	City Proper	1 949	1 865	1 939	-0.3	0.3	8.7	15.8
Russian Federation	Chelyabinsk	City Proper	1 082	1 160	1 187	0.4	0.2	0.8	1.1
Russian Federation	Kazan	City Proper	1 096	1 163	1 185	0.4	0.1	0.8	1.1
Russian Federation	Krasnoyarsk	City Proper	911	1 013	1 047	0.7	0.2	0.7	1.0
Russian Federation	Moskva (Moscow)	City Proper	10 005	12 260	12 200	1.3	0.0	8.7	11.7
Russian Federation	Nizhniy Novgorod	City Proper	1 331	1 200	1 060	-0.6	-0.9	0.8	1.1
Russian Federation	Novosibirsk	City Proper	1 426	1 498	1 517	0.3	0.1	1.1	1.4
Russian Federation	Omsk	City Proper	1 136	1 161	1 175	0.1	0.1	0.8	1.1
Russian Federation	Rostov-na-Donu (Rostov-on-Don)	City Proper	1 061	1 095	1 110	0.2	0.1	0.8	1.0
Russian Federation	Samara	City Proper	1 173	1 162	1 171	-0.1	0.1	0.8	1.1
Russian Federation	Sankt Peterburg (Saint Petersburg)	City Proper	4 719	5 001	4 955	0.4	-0.1	3.5	4.8
Russian Federation	Ufa	City Proper	1 049	1 069	1 085	0.1	0.1	0.8	1.0
Russian Federation	Volgograd	City Proper	1 010	1 020	1 032	0.1	0.1	0.7	1.0
Russian Federation	Yekaterinburg	City Proper	1 303	1 381	1 407	0.4	0.1	1.0	1.3
Ukraine	Kharkiv	City Proper	1 484	1 438	1 393	-0.2	-0.2	3.2	4.6
Ukraine	Kyiv (Kiev)	City Proper	2 606	2 966	3 038	0.8	0.2	6.7	9.6
Ukraine	Odesa	City Proper	1 037	1 011	1 031	-0.2	0.1	2.3	3.3
<b>Northern Europe</b>									
Denmark	København (Copenhagen)	Urban Agglomeration	1 077	1 281	1 455	1.1	0.9	22.5	25.7

Country or area	City	Statistical Concepts	City population (thousands)			Average annual rate of change (percentage)		City population as a proportion of the country or area's total or urban population in 2016 (percentage)	
			2000	2016	2030	2000-2016	2016-2030	Total population	Urban population
Finland	Helsinki	Urban Agglomeration	1 019	1 190	1 293	1.0	0.6	21.7	25.7
Ireland	Dublin	Urban Agglomeration	989	1 185	1 467	1.1	1.5	24.8	39.0
Norway	Oslo	Urban Agglomeration	774	1 002	1 186	1.6	1.2	19.3	23.9
Sweden	Stockholm	Urban Agglomeration	1 206	1 507	1 757	1.4	1.1	15.4	18.0
United Kingdom	Birmingham (West Midlands)	Urban Agglomeration	2 280	2 533	2 808	0.7	0.7	3.9	4.8
United Kingdom	Glasgow	Urban Agglomeration	1 180	1 227	1 360	0.2	0.7	1.9	2.3
United Kingdom	London	Urban Agglomeration	8 613	10 434	11 467	1.2	0.7	16.3	19.6
United Kingdom	Manchester	Urban Agglomeration	2 345	2 668	2 968	0.8	0.8	4.2	5.0
United Kingdom	West Yorkshire	Urban Agglomeration	1 495	1 944	2 235	1.6	1.0	3.0	3.7
<b>Southern Europe</b>									
Greece	Athina (Athens)	Urban Agglomeration	3 179	3 046	3 169	-0.3	0.3	27.4	35.0
Italy	Milano (Milan)	Metropolitan area	2 985	3 104	3 162	0.2	0.1	5.1	7.3
Italy	Napoli (Naples)	Metropolitan area	2 232	2 198	2 226	-0.1	0.1	3.6	5.2
Italy	Roma (Rome)	Metropolitan area	3 385	3 738	3 842	0.6	0.2	6.1	8.8
Italy	Torino (Turin)	Metropolitan area	1 694	1 769	1 825	0.3	0.2	2.9	4.2
Portugal	Lisboa (Lisbon)	Metropolitan area	2 672	2 902	3 192	0.5	0.7	27.4	42.7
Portugal	Porto	Metropolitan area	1 254	1 304	1 443	0.2	0.7	12.3	19.2
Serbia	Beograd (Belgrade)	Urban Agglomeration	1 122	1 183	1 196	0.3	0.1	12.6	22.7
Spain	Barcelona	City Proper	4 355	5 309	5 685	1.2	0.5	11.2	14.1
Spain	Madrid	City Proper	5 014	6 264	6 707	1.4	0.5	13.2	16.6
<b>Western Europe</b>									
Austria	Wien (Vienna)	City Proper	1 549	1 763	1 959	0.8	0.8	20.5	31.1
Belgium	Bruxelles-Brussel	Metropolitan area	1 792	2 061	2 203	0.9	0.5	18.4	18.8
France	Lille	Urban Agglomeration	1 002	1 030	1 142	0.2	0.7	1.6	2.0
France	Lyon	Urban Agglomeration	1 443	1 622	1 814	0.7	0.8	2.5	3.1
France	Marseille-Aix-en-Provence	Urban Agglomeration	1 474	1 616	1 798	0.6	0.8	2.5	3.1
France	Paris	Urban Agglomeration	9 737	10 925	11 803	0.7	0.6	16.7	21.0
Germany	Berlin	City Proper	3 384	3 578	3 658	0.3	0.2	4.3	5.7
Germany	Hamburg	City Proper	1 710	1 839	1 906	0.5	0.3	2.2	3.0
Germany	Köln (Cologne)	City Proper	963	1 042	1 095	0.5	0.4	1.3	1.7
Germany	München (Munich)	City Proper	1 202	1 454	1 548	1.2	0.4	1.8	2.3

Country or area	City	Statistical Concepts	City population (thousands)			Average annual rate of change (percentage)		City population as a proportion of the country or area's total or urban population in 2016 (percentage)	
			2000	2016	2030	2000-2016	2016-2030	Total population	Urban population
Netherlands	Amsterdam	Urban Agglomeration	1 005	1 099	1 213	0.6	0.7	6.5	7.1
Switzerland	Zürich (Zurich)	Urban Agglomeration	1 078	1 259	1 494	1.0	1.2	15.1	20.5
<b>Latin America and the Caribbean</b>									
<b>Caribbean</b>									
Cuba	La Habana (Havana)	Metropolitan area	2 186	2 129	2 104	-0.2	-0.1	18.9	24.5
Dominican Republic	Santo Domingo	Urban Agglomeration	1 997	3 020	3 888	2.6	1.8	28.0	35.1
Haiti	Port-au-Prince	Urban Agglomeration	1 693	2 507	3 525	2.5	2.4	23.3	39.0
Puerto Rico	San Juan	Metropolitan area	2 508	2 460	2 468	-0.1	0.0	66.9	71.5
<b>Central America</b>									
Costa Rica	San José	Urban Agglomeration	1 032	1 183	1 501	0.9	1.7	23.4	30.1
El Salvador	San Salvador	Metropolitan area	1 062	1 102	1 254	0.2	0.9	17.0	25.4
Guatemala	Ciudad de Guatemala (Guatemala City)	Urban Agglomeration	1 973	2 994	4 650	2.6	3.1	18.0	34.6
Honduras	Tegucigalpa	City Proper	752	1 146	1 613	2.6	2.4	13.3	24.1
Mexico	Aguascalientes	Metropolitan area	763	1 050	1 287	2.0	1.5	0.8	1.0
Mexico	Ciudad de México (Mexico City)	Metropolitan area	18 457	21 157	23 865	0.9	0.9	16.7	21.0
Mexico	Ciudad Juárez	Metropolitan area	1 223	1 401	1 650	0.9	1.2	1.1	1.4
Mexico	Cuernavaca	Metropolitan area	803	1 006	1 211	1.4	1.3	0.8	1.0
Mexico	Guadalajara	Metropolitan area	3 724	4 920	5 837	1.7	1.2	3.9	4.9
Mexico	León de los Aldamas	Metropolitan area	1 280	1 845	2 260	2.3	1.5	1.5	1.8
Mexico	Mérida	Metropolitan area	810	1 086	1 323	1.8	1.4	0.9	1.1
Mexico	Mexicali	Metropolitan area	770	1 053	1 288	2.0	1.4	0.8	1.0
Mexico	Monterrey	Metropolitan area	3 405	4 589	5 471	1.9	1.3	3.6	4.6
Mexico	Puebla	Metropolitan area	2 285	3 032	3 628	1.8	1.3	2.4	3.0
Mexico	Querétaro	Metropolitan area	825	1 300	1 630	2.8	1.6	1.0	1.3
Mexico	San Luis Potosí	Metropolitan area	857	1 168	1 426	1.9	1.4	0.9	1.2
Mexico	Tijuana	Metropolitan area	1 365	2 032	2 502	2.5	1.5	1.6	2.0
Mexico	Toluca de Lerdo	Metropolitan area	1 553	2 207	2 690	2.2	1.4	1.7	2.2
Mexico	Torreón	Metropolitan area	1 014	1 354	1 643	1.8	1.4	1.1	1.3
Panama	Ciudad de Panamá (Panama City)	Urban Agglomeration	1 216	1 708	2 221	2.1	1.9	42.2	63.1
<b>South America</b>									



Country or area	City	Statistical Concepts	City population (thousands)			Average annual rate of change (percentage)		City population as a proportion of the country or area's total or urban population in 2016 (percentage)	
			2000	2016	2030	2000-2016	2016-2030	Total population	Urban population
Argentina	Buenos Aires	Urban Agglomeration	12 407	15 334	16 956	1.3	0.7	36.1	39.3
Argentina	Córdoba	Urban Agglomeration	1 348	1 519	1 718	0.7	0.9	3.6	3.9
Argentina	Mendoza	Urban Agglomeration	838	1 020	1 181	1.2	1.0	2.4	2.6
Argentina	Rosario	Urban Agglomeration	1 152	1 395	1 607	1.2	1.0	3.3	3.6
Bolivia (Plurinational State of)	Cochabamba	Metropolitan area	721	1 273	1 703	3.6	2.1	11.4	16.5
Bolivia (Plurinational State of)	La Paz	Urban Agglomeration	1 390	1 834	2 308	1.7	1.6	16.4	23.8
Bolivia (Plurinational State of)	Santa Cruz	City Proper	1 054	2 181	2 989	4.5	2.3	19.5	28.3
Brazil	Baixada Santista	Urban Agglomeration	1 309	1 551	1 769	1.1	0.9	0.8	0.9
Brazil	Belém	Metropolitan area	1 724	2 209	2 540	1.5	1.0	1.1	1.3
Brazil	Belo Horizonte	Metropolitan area	4 807	5 766	6 439	1.1	0.8	2.8	3.3
Brazil	Brasília	Metropolitan area	2 932	4 235	4 929	2.3	1.1	2.1	2.4
Brazil	Campinas	Metropolitan area	2 332	3 091	3 560	1.8	1.0	1.5	1.8
Brazil	Curitiba	Metropolitan area	2 494	3 537	4 116	2.2	1.1	1.7	2.0
Brazil	Florianópolis	Metropolitan area	734	1 212	1 481	3.1	1.4	0.6	0.7
Brazil	Fortaleza	Metropolitan area	2 875	3 944	4 551	2.0	1.0	1.9	2.2
Brazil	Goiânia	Metropolitan area	1 635	2 327	2 730	2.2	1.1	1.1	1.3
Brazil	Grande São Luís	Urban Agglomeration	1 064	1 460	1 714	2.0	1.1	0.7	0.8
Brazil	Grande Vitória	Urban Agglomeration	1 314	1 655	1 908	1.4	1.0	0.8	0.9
Brazil	João Pessoa	Urban Agglomeration	842	1 109	1 298	1.7	1.1	0.5	0.6
Brazil	Joinville	Metropolitan area	923	1 237	1 450	1.8	1.1	0.6	0.7
Brazil	Maceió	Metropolitan area	952	1 286	1 508	1.9	1.1	0.6	0.7
Brazil	Manaus	City Proper	1 392	2 069	2 454	2.5	1.2	1.0	1.2
Brazil	Natal	Urban Agglomeration	860	1 186	1 399	2.0	1.2	0.6	0.7
Brazil	Pôrto Alegre	Metropolitan area	3 216	3 621	4 028	0.7	0.8	1.8	2.1
Brazil	Recife	Metropolitan area	3 205	3 767	4 222	1.0	0.8	1.8	2.1
Brazil	Rio de Janeiro	Metropolitan area	11 307	12 981	14 174	0.9	0.6	6.3	7.4
Brazil	Salvador	Metropolitan area	2 891	3 623	4 115	1.4	0.9	1.8	2.1
Brazil	São Paulo	Metropolitan area	17 014	21 297	23 444	1.4	0.7	10.4	12.1
Chile	Santiago	Urban Agglomeration	5 658	6 544	7 122	0.9	0.6	36.2	40.4
Colombia	Barranquilla	Metropolitan area	1 531	2 009	2 370	1.7	1.2	4.0	5.2
Colombia	Bogotá	Urban Agglomeration	6 356	9 968	11 966	2.8	1.3	19.9	25.9

Country or area	City	Statistical Concepts	City population (thousands)			Average annual rate of change (percentage)		City population as a proportion of the country or area's total or urban population in 2016 (percentage)	
			2000	2016	2030	2000-2016	2016-2030	Total population	Urban population
Colombia	Bucaramanga	Urban Agglomeration	855	1 235	1 507	2.3	1.4	2.5	3.2
Colombia	Cali	Urban Agglomeration	1 950	2 682	3 203	2.0	1.3	5.4	7.0
Colombia	Cartagena	City Proper	737	1 113	1 372	2.6	1.5	2.2	2.9
Colombia	Medellín	Metropolitan area	2 724	3 972	4 747	2.4	1.3	7.9	10.3
Ecuador	Guayaquil	Urban Agglomeration	2 077	2 756	3 493	1.8	1.7	16.7	26.2
Ecuador	Quito	City Proper	1 357	1 754	2 228	1.6	1.7	10.7	16.6
Paraguay	Asunción	Urban Agglomeration	1 499	2 406	3 135	3.0	1.9	33.7	56.2
Peru	Lima	Metropolitan area	7 294	10 072	12 221	2.0	1.4	31.9	40.4
Uruguay	Montevideo	Metropolitan area	1 600	1 716	1 860	0.4	0.6	49.9	52.2
Venezuela (Bolivarian Republic of)	Barquisimeto	Metropolitan area	946	1 044	1 228	0.6	1.2	3.3	3.7
Venezuela (Bolivarian Republic of)	Caracas	Metropolitan area	2 864	2 923	3 347	0.1	1.0	9.2	10.3
Venezuela (Bolivarian Republic of)	Maracaibo	Metropolitan area	1 724	2 229	2 677	1.6	1.3	7.0	7.9
Venezuela (Bolivarian Republic of)	Maracay	Metropolitan area	898	1 186	1 450	1.7	1.4	3.7	4.2
Venezuela (Bolivarian Republic of)	Valencia	Metropolitan area	1 392	1 757	2 107	1.5	1.3	5.5	6.2
<b>Northern America</b>									
Canada	Calgary	Metropolitan area	927	1 365	1 630	2.4	1.3	3.8	4.6
Canada	Edmonton	Metropolitan area	924	1 298	1 547	2.1	1.3	3.6	4.4
Canada	Montréal	Metropolitan area	3 429	4 014	4 517	1.0	0.8	11.1	13.5
Canada	Ottawa-Gatineau	Metropolitan area	1 055	1 346	1 577	1.5	1.1	3.7	4.5
Canada	Toronto	Metropolitan area	4 607	6 083	6 957	1.7	1.0	16.8	20.5
Canada	Vancouver	Metropolitan area	1 959	2 523	2 930	1.6	1.1	7.0	8.5
United States of America	Atlanta	Urban Agglomeration	3 522	5 249	6 140	2.5	1.1	1.6	2.0
United States of America	Austin	Urban Agglomeration	911	1 744	2 182	4.1	1.6	0.5	0.7
United States of America	Baltimore	Urban Agglomeration	2 079	2 275	2 543	0.6	0.8	0.7	0.8
United States of America	Boston	Urban Agglomeration	4 036	4 255	4 671	0.3	0.7	1.3	1.6
United States of America	Charlotte	Urban Agglomeration	768	1 685	2 166	4.9	1.8	0.5	0.6
United States of America	Chicago	Urban Agglomeration	8 315	8 755	9 493	0.3	0.6	2.7	3.3
United States of America	Cincinnati	Urban Agglomeration	1 506	1 696	1 916	0.7	0.9	0.5	0.6
United States of America	Cleveland	Urban Agglomeration	1 786	1 769	1 948	-0.1	0.7	0.5	0.7
United States of America	Columbus, Ohio	Urban Agglomeration	1 139	1 528	1 788	1.8	1.1	0.5	0.6
United States of America	Dallas-Fort Worth	Urban Agglomeration	4 168	5 799	6 683	2.1	1.0	1.8	2.2

Country or area	City	Statistical Concepts	City population (thousands)			Average annual rate of change (percentage)		City population as a proportion of the country or area's total or urban population in 2016 (percentage)	
			2000	2016	2030	2000-2016	2016-2030	Total population	Urban population
United States of America	Denver-Aurora	Urban Agglomeration	1 994	2 636	3 048	1.7	1.0	0.8	1.0
United States of America	Detroit	Urban Agglomeration	3 899	3 618	3 886	-0.5	0.5	1.1	1.4
United States of America	Houston	Urban Agglomeration	3 847	5 757	6 729	2.5	1.1	1.8	2.1
United States of America	Indianapolis	Urban Agglomeration	1 225	1 672	1 961	1.9	1.1	0.5	0.6
United States of America	Jacksonville, Florida	Urban Agglomeration	886	1 190	1 398	1.8	1.2	0.4	0.4
United States of America	Kansas City	Urban Agglomeration	1 365	1 617	1 846	1.1	0.9	0.5	0.6
United States of America	Las Vegas	Urban Agglomeration	1 326	2 340	2 867	3.5	1.5	0.7	0.9
United States of America	Los Angeles-Long Beach-Santa Ana	Urban Agglomeration	11 798	12 317	13 257	0.3	0.5	3.8	4.6
United States of America	Louisville	Urban Agglomeration	866	1 041	1 201	1.2	1.0	0.3	0.4
United States of America	Memphis	Urban Agglomeration	974	1 113	1 269	0.8	0.9	0.3	0.4
United States of America	Miami	Urban Agglomeration	4 933	5 864	6 554	1.1	0.8	1.8	2.2
United States of America	Milwaukee	Urban Agglomeration	1 311	1 413	1 588	0.5	0.8	0.4	0.5
United States of America	Minneapolis-St. Paul	Urban Agglomeration	2 395	2 812	3 175	1.0	0.9	0.9	1.0
United States of America	Nashville-Davidson	Urban Agglomeration	755	1 129	1 357	2.5	1.3	0.3	0.4
United States of America	New York-Newark	Urban Agglomeration	17 813	18 604	19 885	0.3	0.5	5.7	6.9
United States of America	Orlando	Urban Agglomeration	1 165	1 769	2 115	2.6	1.3	0.5	0.7
United States of America	Philadelphia	Urban Agglomeration	5 156	5 602	6 158	0.5	0.7	1.7	2.1
United States of America	Phoenix-Mesa	Urban Agglomeration	2 923	4 135	4 808	2.2	1.1	1.3	1.5
United States of America	Pittsburgh	Urban Agglomeration	1 753	1 715	1 884	-0.1	0.7	0.5	0.6
United States of America	Portland	Urban Agglomeration	1 589	2 025	2 336	1.5	1.0	0.6	0.8
United States of America	Providence	Urban Agglomeration	1 175	1 196	1 333	0.1	0.8	0.4	0.4
United States of America	Raleigh	Urban Agglomeration	548	1 188	1 533	4.8	1.8	0.4	0.4
United States of America	Richmond	Urban Agglomeration	822	1 042	1 214	1.5	1.1	0.3	0.4
United States of America	Riverside-San Bernardino	Urban Agglomeration	1 516	2 239	2 653	2.4	1.2	0.7	0.8
United States of America	Sacramento	Urban Agglomeration	1 401	1 953	2 294	2.1	1.1	0.6	0.7
United States of America	Salt Lake City	Urban Agglomeration	891	1 108	1 284	1.4	1.1	0.3	0.4
United States of America	San Antonio	Urban Agglomeration	1 337	2 077	2 488	2.8	1.3	0.6	0.8
United States of America	San Diego	Urban Agglomeration	2 681	3 129	3 522	1.0	0.8	1.0	1.2
United States of America	San Francisco-Oakland	Urban Agglomeration	3 230	3 299	3 615	0.1	0.7	1.0	1.2
United States of America	San Jose	Urban Agglomeration	1 541	1 739	1 964	0.8	0.9	0.5	0.6
United States of America	Seattle	Urban Agglomeration	2 720	3 278	3 709	1.2	0.9	1.0	1.2

Country or area	City	Statistical Concepts	City population (thousands)			Average annual rate of change (percentage)		City population as a proportion of the country or area's total or urban population in 2016 (percentage)	
			2000	2016	2030	2000-2016	2016-2030	Total population	Urban population
United States of America	St. Louis	Urban Agglomeration	2 079	2 187	2 427	0.3	0.7	0.7	0.8
United States of America	Tampa-St. Petersburg	Urban Agglomeration	2 071	2 694	3 105	1.6	1.0	0.8	1.0
United States of America	Virginia Beach	Urban Agglomeration	1 396	1 462	1 632	0.3	0.8	0.4	0.5
United States of America	Washington, D.C.	Urban Agglomeration	3 949	5 013	5 690	1.5	0.9	1.5	1.9
<b>Oceania</b>									
<b>Australia/New Zealand</b>									
Australia	Adelaide	Metropolitan area	1 142	1 265	1 505	0.6	1.2	5.2	5.8
Australia	Brisbane	Metropolitan area	1 666	2 238	2 721	1.8	1.4	9.2	10.3
Australia	Melbourne	Metropolitan area	3 461	4 258	5 071	1.3	1.2	17.6	19.6
Australia	Perth	Metropolitan area	1 432	1 896	2 329	1.8	1.5	7.8	8.7
Australia	Sydney	Metropolitan area	4 052	4 540	5 301	0.7	1.1	18.7	20.9
New Zealand	Auckland	Urban Agglomeration	1 063	1 360	1 574	1.5	1.0	29.3	34.0

Data source: United Nations, Department of Economic and Social Affairs, Population Division (2014). *World Urbanization Prospects: The 2014 Revision*.

#### Notes

This annex table includes only cities with 1 million inhabitants or more on 1 July 2016.

An em dash (—) indicates that the value is zero (magnitude zero).

Two dots (..) indicate that the item is not applicable.

A minus sign (-) before a figure indicates a decrease

A full stop is used to indicate decimals.

Use of en dash (–) between years, for example 2000-2016, signifies the full period involved, from 1 July of the beginning year to 1 July of the end year.

16-08874

ISBN 978-92-1-151549-7

