

Migratory fish important part of fisheries management and ecology



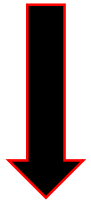
Loss of connectivity in river basins – Various Sources



Credit: T. Overheu



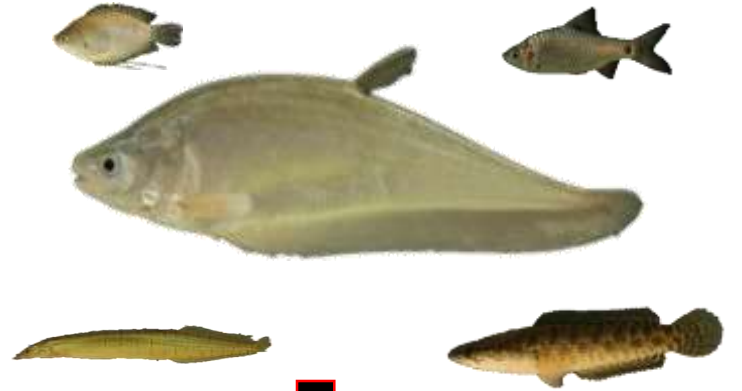
Myanmar Fish Barrier threats



Main Stem and Tributary Dams



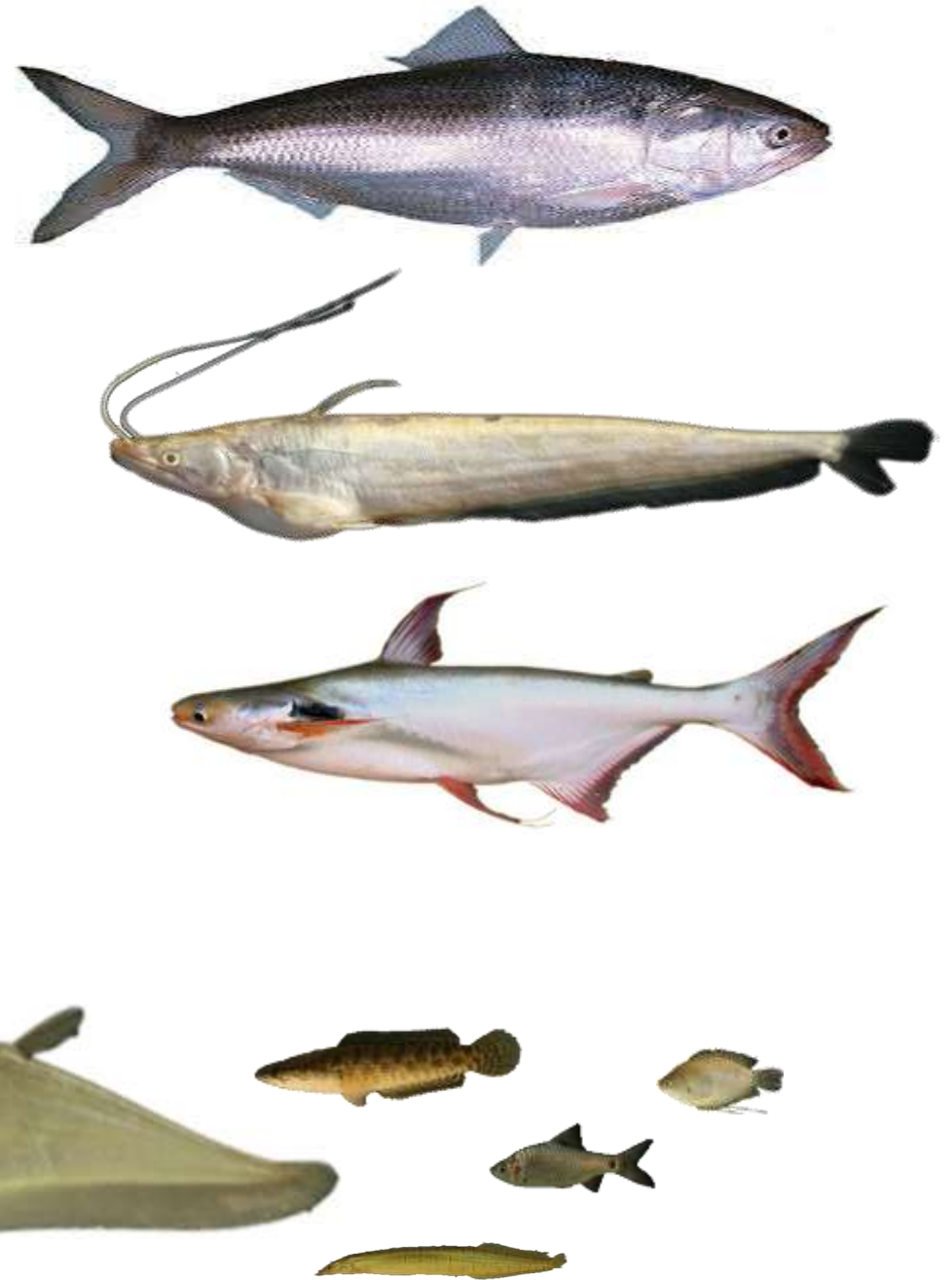
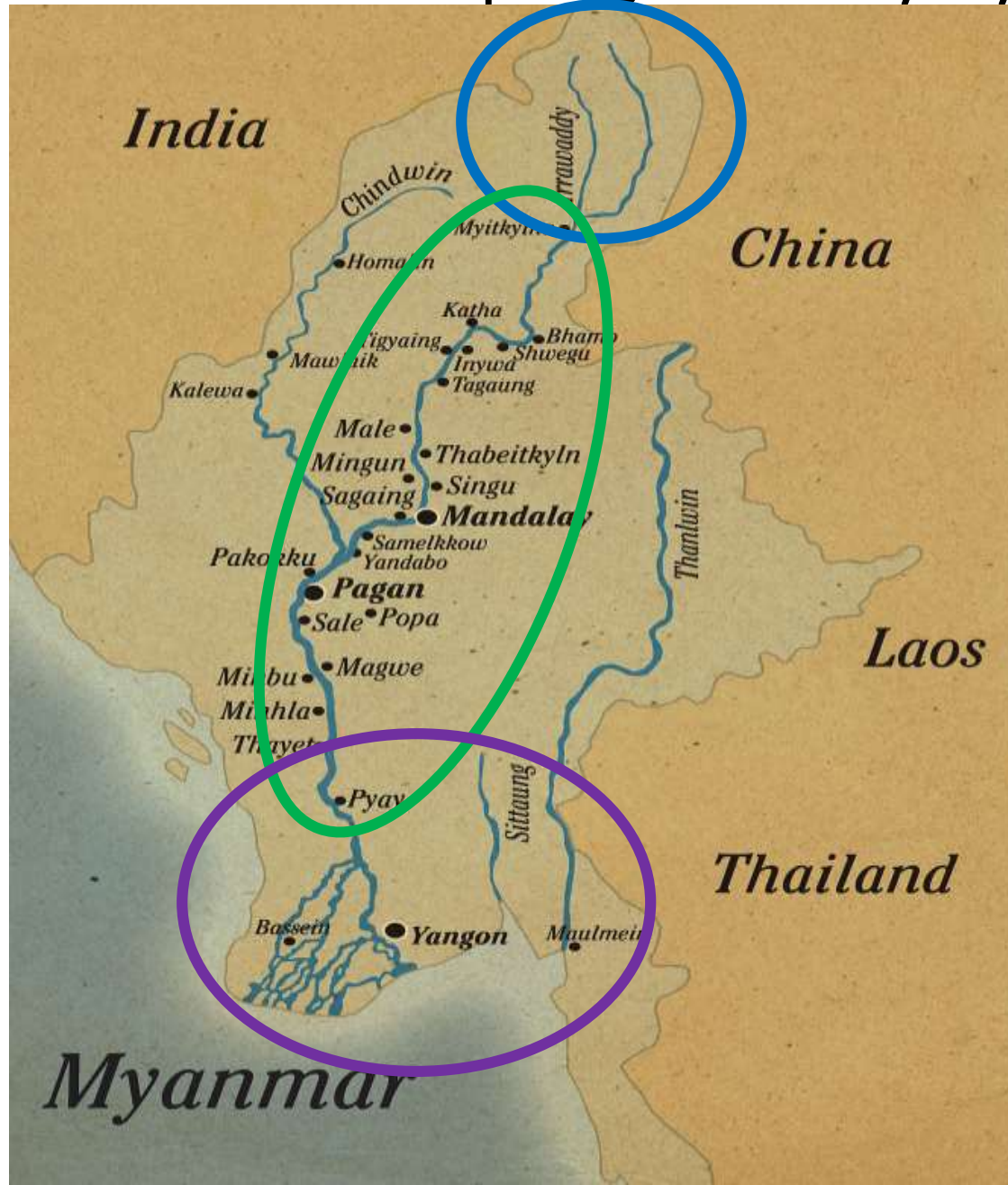
Sluices and Dams



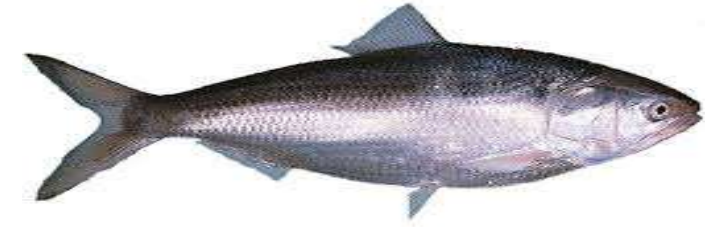
Irrigation Wetland Regulators



Delta flows project: Ayeyarwady



Delta flows project: Ayeyarwady



Freshwater: Rich in
Barium
If Barium high, time in
freshwater

Seawater: Rich in
Strontium
If strontium is high,
time spent in saltwater

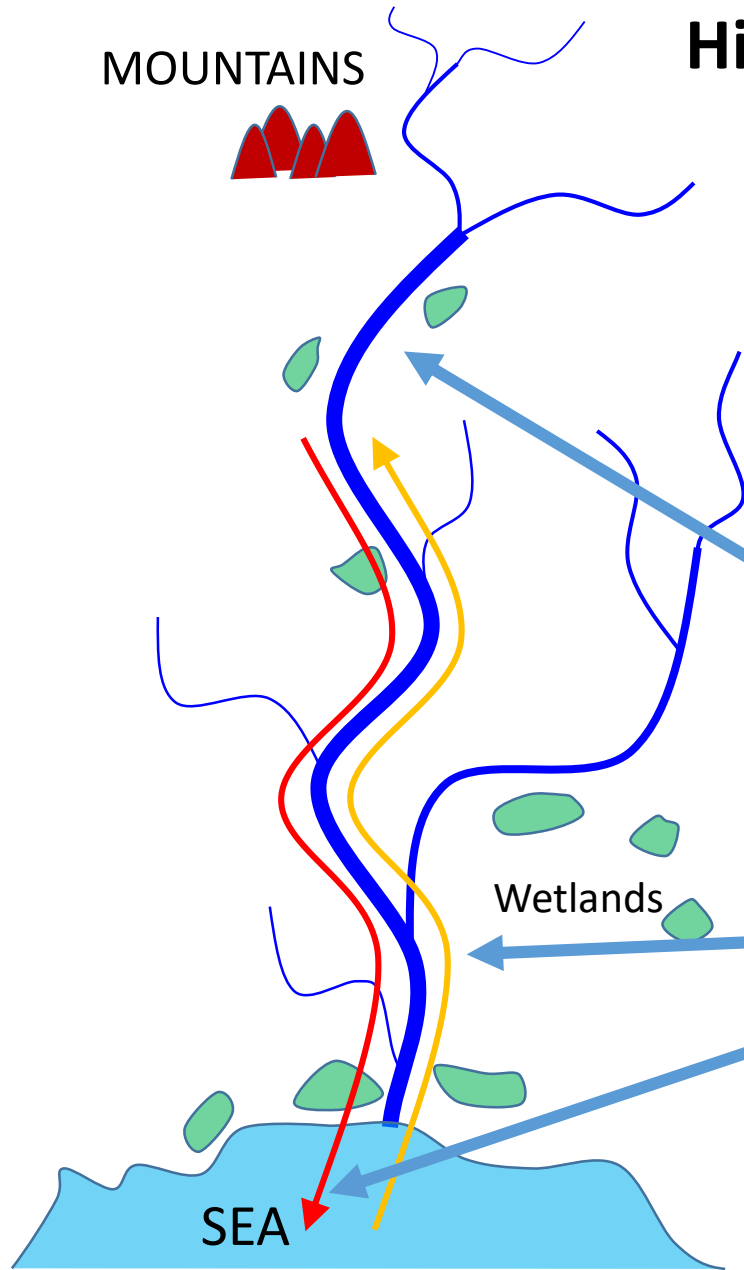


MOUNTAINS

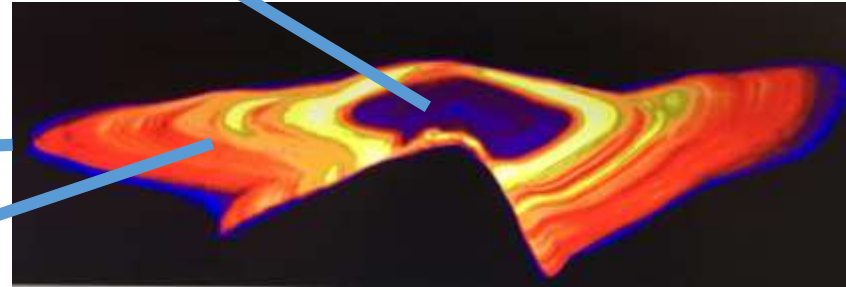


Hilsa (Nga Tha Lauk)

Freshwater – Sea - Freshwater



Wetlands



SEA

Catfish – Pangasias myanmar – Nga dan

MOUNTAINS

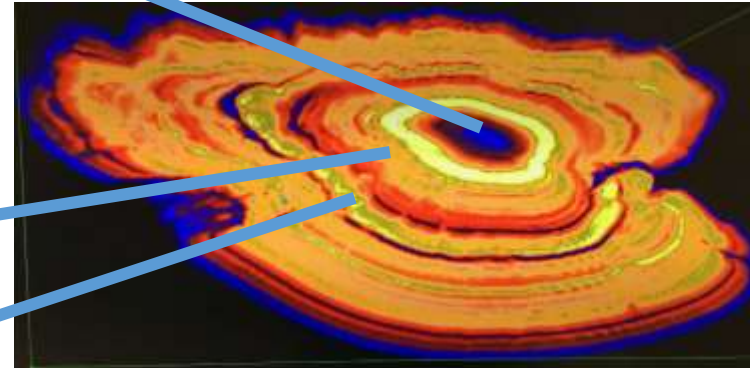


Sea–freshwater–Sea–Freshwater



Wetlands

SEA

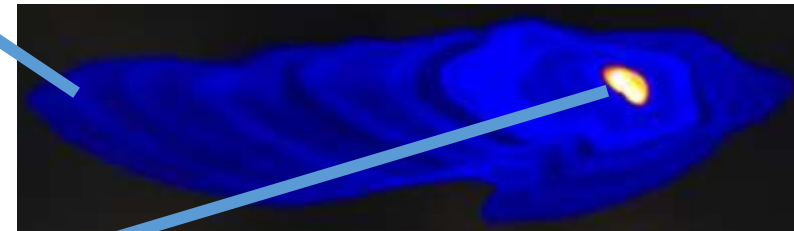
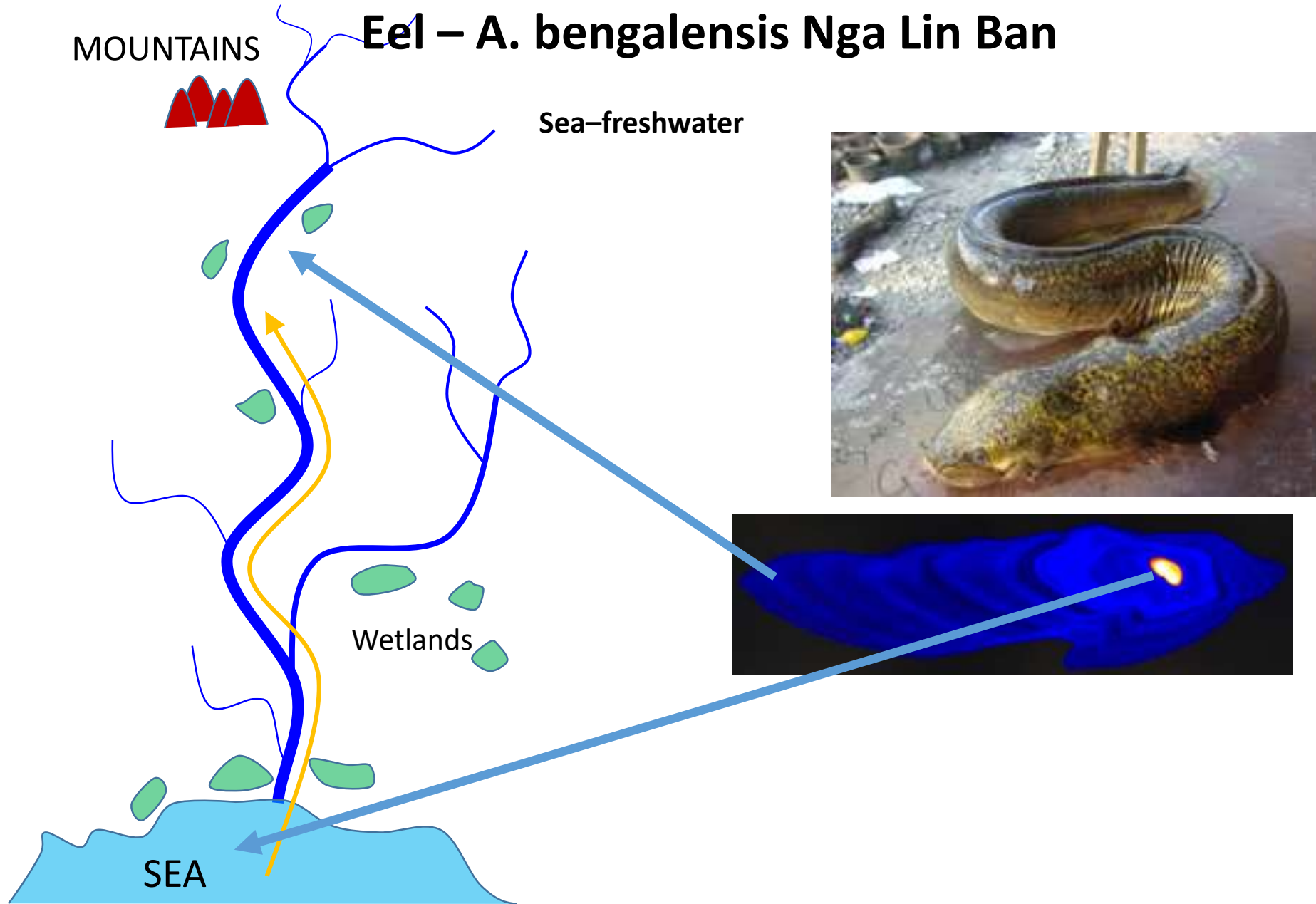


MOUNTAINS



Eel – *A. bengalensis* Nga Lin Ban

Sea–freshwater



Fish migration and fish passage are needed for maintaining productive fisheries and sustainable rice

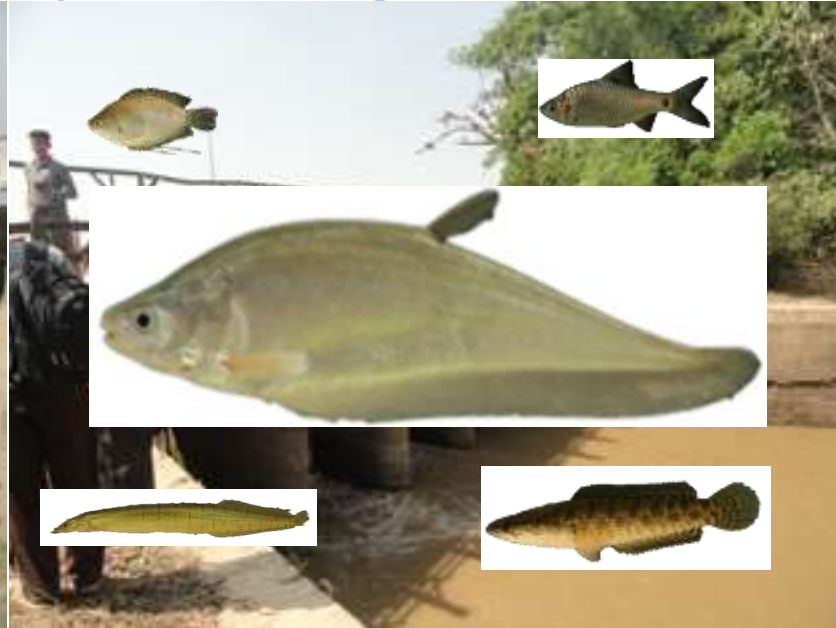
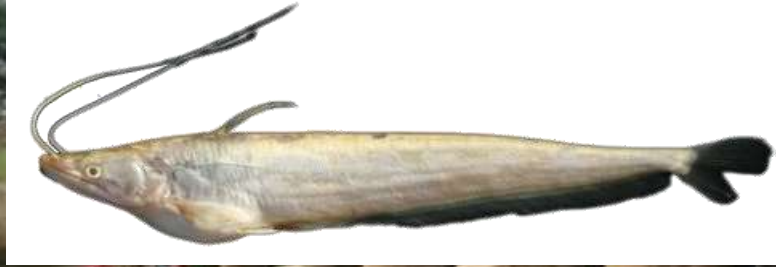


Project: Quantifying biophysical and community impacts of improved fish passage in Lao PDR and Myanmar

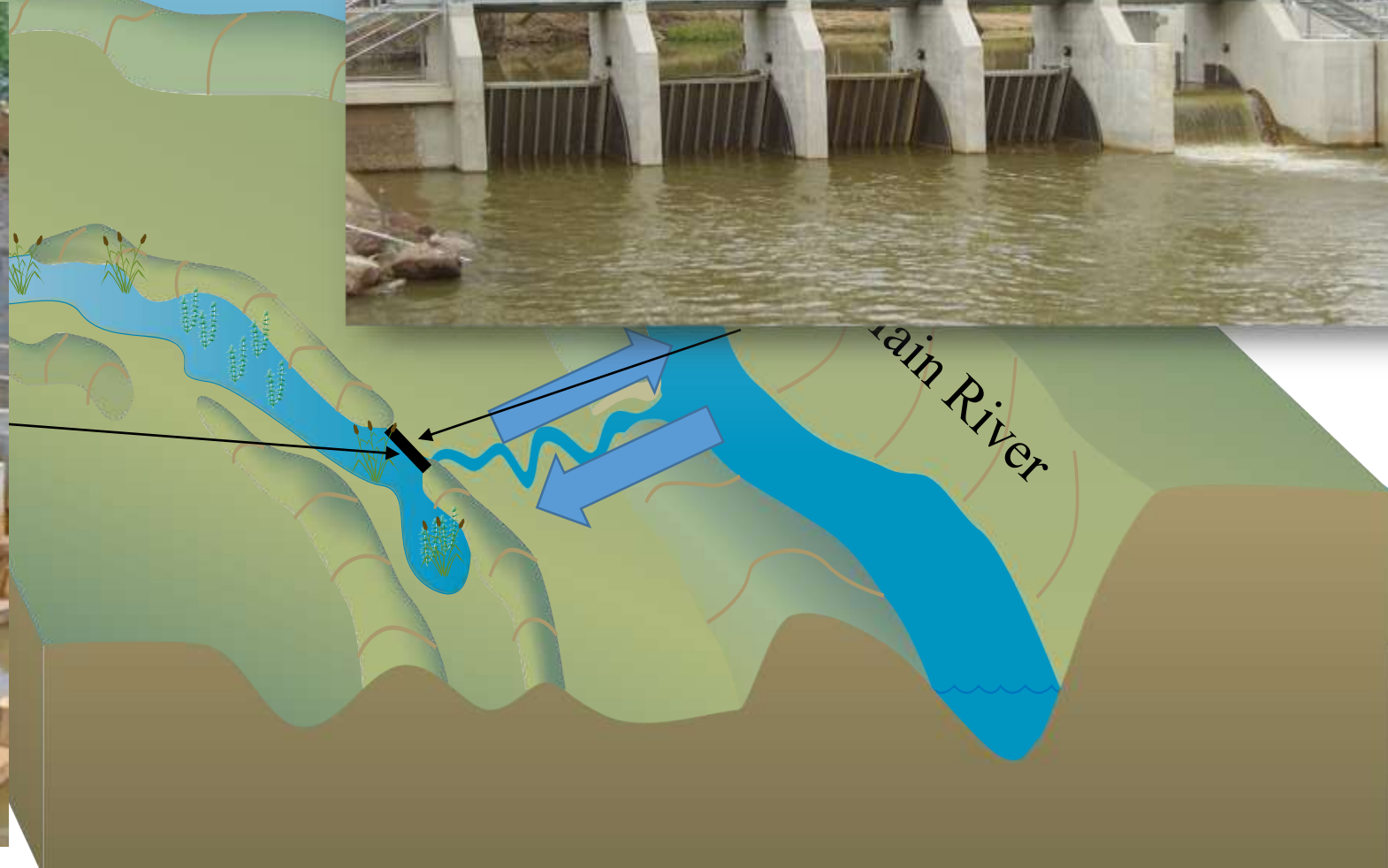
Myanmar Fish Passage Team



Loss of connectivity in Bago/Sittoung – Various Sources



How to use engineering to boost fisheries in agricultural landscapes



Fish passage design critical – locally adapted



Partnership Approach

Quantifying biophysical and community impacts of improved fish passage in Lao PDR and Myanmar

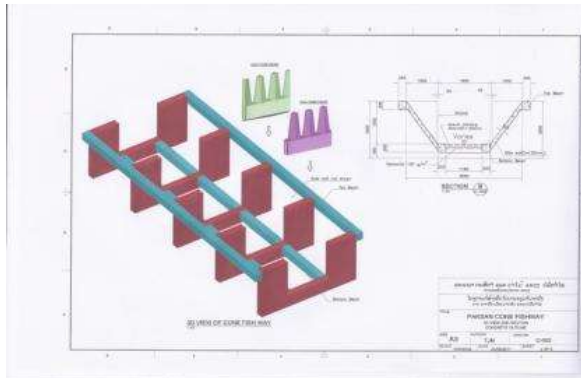
1. Identify barriers



2. Prioritise and inspect barriers



3. design process



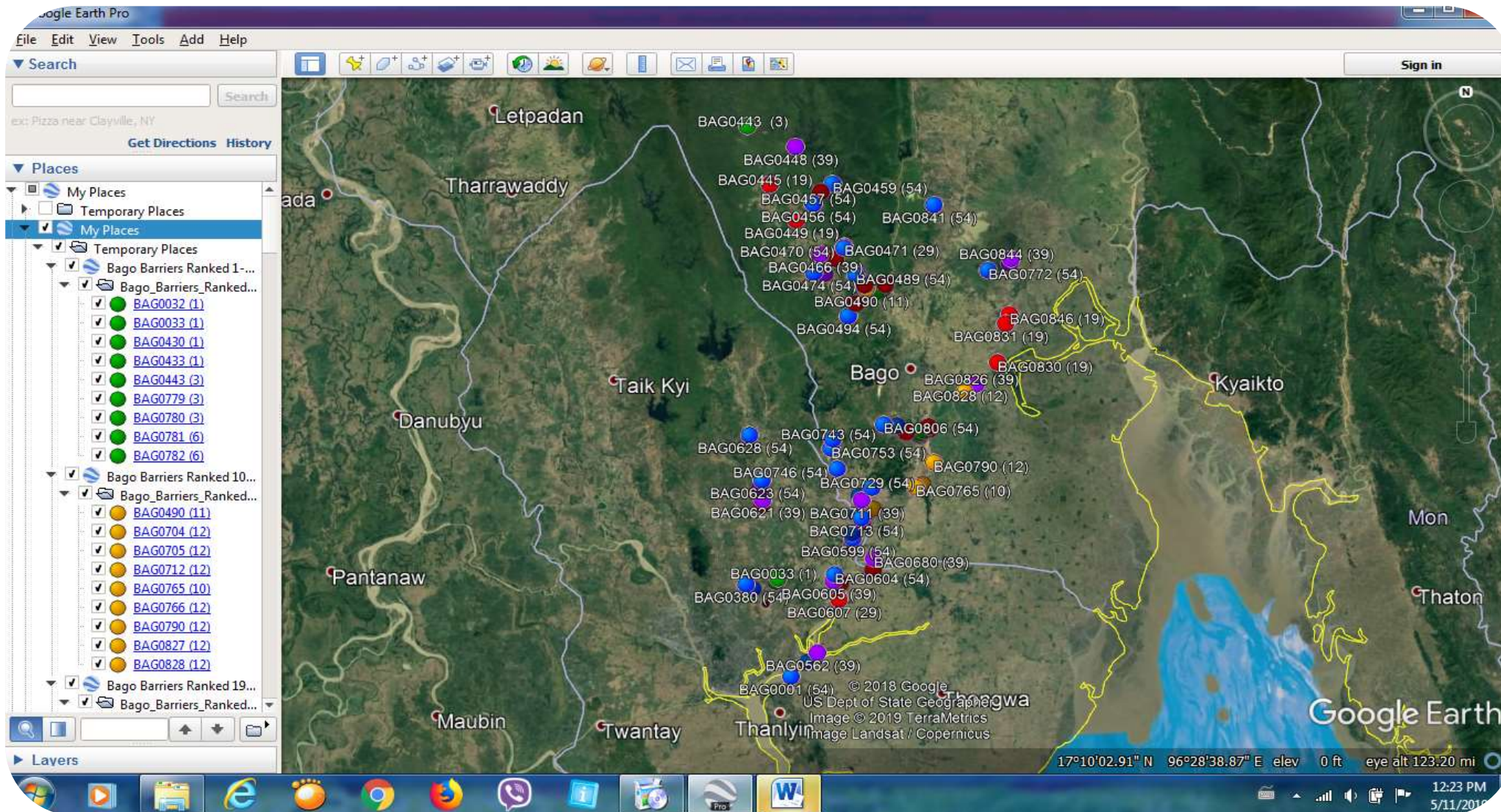
4. construction process



5. monitoring fisheries response



Desktop Survey Map Assessment



Site Investigations

- Use a standard protocol
- Measurements, fisheries data, hydrological data
- Irrigation and Fisheries Staff + Local communities + fishermen
- Need strong collaboration



Barriers Prioritization



Abyar Sluice Gate

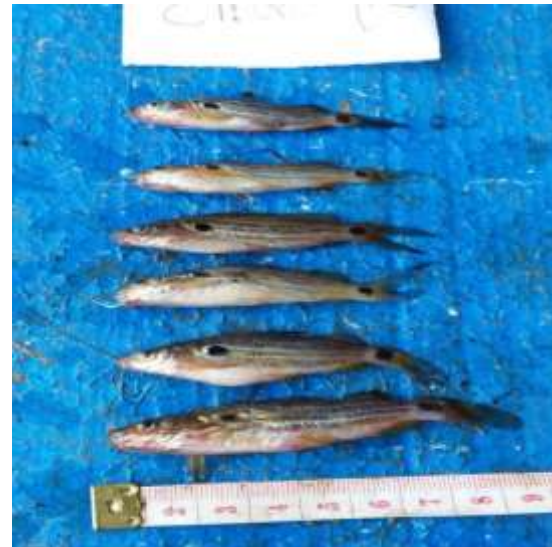
Zaung Tu Weir

Shangaing Sluice Gate

Nga Moe Yeik Sluice Gate in East Dagon

Fisheries data collection in Shangaing and Abyar

- Before Shangaing sluice gate , (37) fish species
- After Shangaing sluice gate , (22) fish species
- At present in survey , (25) fish species are found
- But The catch rate is low one third of of pre barrier



FISH SPECIES AROUND THE SHAN GAING GATE



Fish species around the barrier

- *Gibelion catla*
- *Osteobrama belangeri*
- *Puntius* sp.
- *Mystus* sp.
- *Sperata acicularis*
- *Belone* sp.
- *Macragnathus* sp.
- *Lates calcarifer*
- *Glossogobius* sp. etc...



Brief assessment

