

# WFP Myanmar Situation Report

September 2022

## Highlights

- In September, WFP reached close to **780,000 people** with food and cash assistance, including 26,000 internally displaced people (IDP) and other vulnerable people who received WFP assistance for the first time.
- In 2022, WFP has thus far assisted **2.7 million** crisis-affected people across Myanmar with emergency food, livelihoods, and nutrition support.

## In Numbers

**15.2 million** people are facing acute food insecurity

**1.38 million** people are displaced

**4 million** people are targeted for WFP assistance

**2.7 million** people assisted by WFP in 2022

## Situation Update

- **Food prices** continued to soar in September, with an increase of 14 percent compared to August. WFP's price monitoring showed a 62 percent year-on-year increase in the cost of a basic food basket. The cost of cooking oil was up by 137 percent, and rice was up by 53 percent. Fuel prices remained steady but nearly double (+94 percent) that of last year.
- **The temporary suspension of humanitarian assistance**, announced in mid-September, in six townships in Rakhine State remains in place, currently affecting some 60,000 WFP beneficiaries. WFP is working with concerned authorities to resume cash and food deliveries to beneficiaries as soon as possible.
- **Financial situation:** The Financial Action Task Force (FATF) has [placed](#) Myanmar on its blacklist, on grounds of serious deficiencies in the country's ability to counter money laundering and terrorist financing. International financial transfers will be subject to increased monitoring and restrictions. The decision may affect WFP's ability to maintain cash flows into the country. Delays and additional costs are expected.
- **Humanitarian situation:** [UNHCR](#) estimates more than 1.38 million people are internally displaced by conflict in Myanmar as of 10 October. Of whom, more than 1 million have been displaced since February 2021, with 734,000 displaced in 2022 alone. This comes on top of a further 330,000 protracted IDPs before February 2021.

## WFP Response

- **In September, WFP reached 779,000 people** across Myanmar with food, nutrition, and livelihoods support. In October, WFP plans to assist 734,000 people with food and cash assistance.
- **Rising food and fuel prices** have led to challenges with some WFP contractors who receive payments in Myanmar kyat. Contractual values were no longer commensurate with market rates, making it difficult for contractors to cover their costs. WFP is making contract revisions to ensure distributions are maintained and contractors can cover costs. WFP is closely monitoring the situation and periodically adjusts the value of cash-based transfers (CBT) based on prevailing market rates.
- **WFP has been able to reach 110,000 beneficiaries in areas of Rakhine State** affected by the suspension to date in October. However access to some 35,000 people in northern Rakhine remains challenging, especially in Maungdaw Township which has been under lockdown since August due to active conflict in the area.



An elderly women IDP in Kayah State prepares lunch with pulses provided by WFP ©WFP/Htet Oo Linn

A group of children attending a nutrition and hygiene awareness session conducted by WFP in Maungdaw Township, Rakhine State. © WFP/Nant Hnin Hnin Chan

## WFP Response – by State/Region

### Rakhine State

- WFP was able to reach around 90 percent of the planned 169,000 beneficiaries in central Rakhine State in September, despite access restrictions in place. In October, WFP plans to reach up to 170,000 beneficiaries.
- In northern Rakhine State, despite challenging access constraints, WFP has managed to gradually increase its access to beneficiaries. In September, only 2,000 of a planned 100,000 beneficiaries were reached. So far in October, WFP has reached 40,000 beneficiaries, mostly in Buthidaung Township, which is less affected by the ongoing conflict.

### Chin State

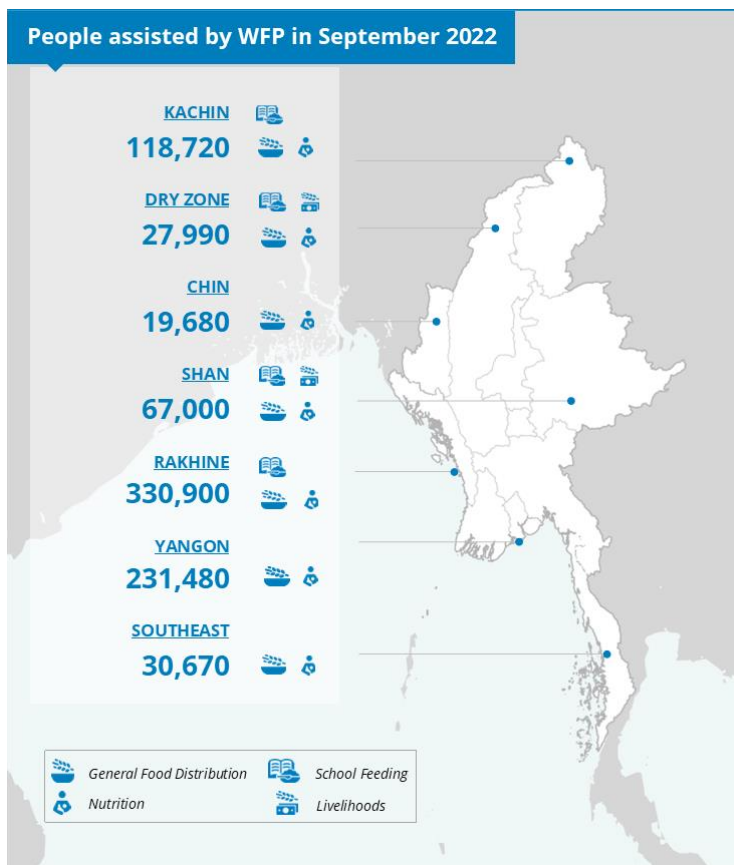
- **WFP reached almost 20,000 new IDPs** in four townships in Chin State in September, with plans to support them with food and nutrition assistance in October. These townships are Hakha, Meeza, Paletwa and Samee.

### Kayah State

- WFP completed a **beneficiary targeting data collection exercise** in Loikaw Township, covering 11,000 households. WFP reached around 80,000 beneficiaries through three rounds of blanket distributions, with the last full round completed in August.
- A fourth round of targeted distributions is planned to commence in early November, using the updated lists targeting vulnerable households.

### Peri-urban Yangon

- **WFP completed a third round** of food relief distributions in peri-urban Yangon in September, reaching 223,500 beneficiaries.
- Plans to transition fully to cash-based support for people using social protection criteria are in progress.



## Resourcing Update

WFP requires **US\$ 72 million** over the next six months (November 2022 – April 2023) to ensure uninterrupted support to beneficiaries. Of which, **US\$ 54 million** (75 percent) is for life-saving food assistance.

Without additional funds, cash-based operations in crisis-affected areas will face interruptions in December, affecting 419,000 IDPs and crisis-affected people; while in-kind food assistance will experience a break in February 2023, affecting 379,000 IDPs and crisis-affected people.

## WFP Response – by sector



### Food and Nutrition Assistance

#### General Food Assistance

- In 2022, **2.2 million** conflict and crisis-affected people have received WFP emergency food support, including **285,000 new IDPs and people affected by recent conflict**. In September, WFP assisted 269,800 people through CBT and 510,300 with food rations, while others received commodity vouchers or a mix of rice plus cash.
- In September, WFP distributed **3,377 mt of food** and **US\$ 2.5 million** in cash under the general food assistance programme.

#### Nutrition

- So far in 2022, WFP has provided **132,600 children aged 6-59 months** and **26,600 pregnant and lactating women (PLW)** with nutritious foods to prevent and treat acute malnutrition.
- In September, WFP reached **32,900 children** and **11,200 PLW**, as well as **7,100 people living with HIV/ Tuberculosis (TB)** with nutrition support. Meanwhile, nutrition support to 13,000 people in northern Rakhine is affected by the suspension of humanitarian assistance in the State.
- WFP plans to distribute a three-month ration for 1,900 people in Kachin State, to prevent a potential gap in support in the event of any delayed travel authorizations.
- WFP is leading the development of a set of new food-based dietary guidelines for school children, in coordination with UN Nutrition and other development partners.

#### School feeding

- WFP assisted **245,100 children** in September, with **2,245 mt** of high energy biscuits and **US\$ 2.2 million** in cash for school meals in **2,400 schools** across Tanintharyi Region and Rakhine, Kachin, Kayin, Shan and Mon states and Naga Self-Administered Zone in Sagaing Region. Of these, **5,600 students** in **73 schools** were reached for the first time with school meal support or high energy biscuits.
- More than **3,800 students** in **33 schools** in Mon, Kayin and Tanintharyi shifted back to receiving high energy biscuits from WFP in September, due to parents' security concerns.

#### Asset creation and livelihoods (ACL)

- In 2022, WFP ACL projects benefited **72,300** people. These enable vulnerable communities to meet their basic food needs while building resilience. In September, WFP assisted **1,230 people** through ACL projects in northern Shan State and Naga Self-Administered Zone in Sagaing Region.
- Between October and December, WFP plans to support **40 new projects** involving **3,800 participants** in Kachin and Shan states. The projects include road renovations, home gardening support, farmland development, dyke renovations and building fuel efficient stoves. There are also plans for 11 new projects in Naga, targeting 1,400 people through tree planting, water supply and road and canal construction projects, among others.



#### Supply Chain and Logistics

- Between January and September, WFP locally procured **49,395 mt** of food, worth **US\$ 18.3 million**.
- In September, WFP dispatched **3,598 mt** of mixed food commodities across Myanmar.
- Retail rice prices continue to be high, despite the availability of new crops in the market. WFP market monitoring showed September food prices were 62 per cent higher compared to the same time last year.
- WFP is working to transport food to Magway Region for some 4,500 IDPs in Saw and Kyauktu townships. WFP has been working to reach people in these areas since March.



#### Protection

- WFP received 8,700 cases reported through its Community Engagement Mechanism so far in 2022. More than half are related to requests to be included as WFP beneficiaries.
- WFP continued its six-month **cash top-up pilot for people with disabilities**. The pilot beneficiary list was expanded in September and will now cover **1,400 people** in vulnerable households in Kachin and Shan states. This is double the number reached when the pilot first started in August.
- WFP completed data collection for beneficiary targeting in Kayah State, with updated targeted lists to be used for distributions starting in November.

#### Contact Us:

OIM & Reports Officer: Melissa Hein: [melissa.hein@wfp.org](mailto:melissa.hein@wfp.org)

WFP Country Director: Stephen Anderson: [stephen.anderson@wfp.org](mailto:stephen.anderson@wfp.org)

WFP Myanmar Situation Report, 26 October 2022

[wfp.org/Myanmar](http://wfp.org/Myanmar)