



World Food Programme

SAVING LIVES  
CHANGING LIVES

# WFP Myanmar Situation Report #1 March 2021

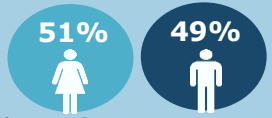


**WFP 6-Month Net Funding Requirement**  
(April 2021 – September 2021)

WFP Myanmar Country Strategic Plan (2018-2022)

**US\$ 40 million**

## In Numbers



**629,200** people assisted in **February 2021**

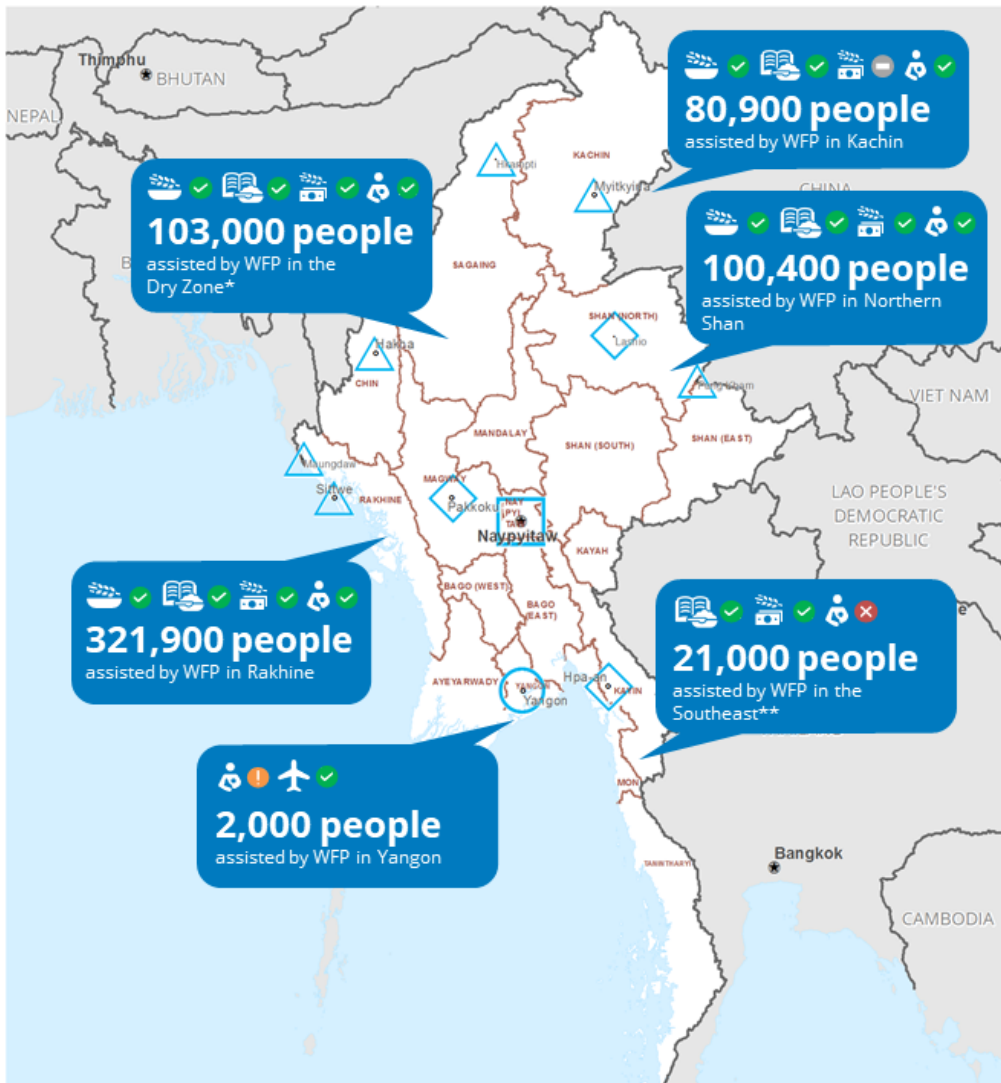
**3,058 mt** of food distributed

**US\$ 1.3 million** in cash-based transfers made



## Highlights

- **WFP is committed to stay and deliver** humanitarian assistance directly to the people of Myanmar.
- **Over half a million people** received WFP food and cash assistance in February 2021.
- WFP Market Monitor showed **increases in the prices of key staple food and fuel** since 1 February.
- **WFP bi-weekly humanitarian flights** (Kuala Lumpur-Yangon-Kuala Lumpur) transport humanitarian workers and essential cargo.



Contact info: [wfp.myanmar@wfp.org](mailto:wfp.myanmar@wfp.org)  
Country Director: Stephen Anderson  
Further information: <https://www.wfp.org/countries/myanmar>

## Situation Update

- Seven weeks following the military takeover on 1 February 2021, the situation in Myanmar is evolving rapidly, with a high risk of increasing food insecurity and malnutrition, particularly for the urban poor.
- Food and fuel prices in Myanmar are rising, according to [WFP price monitoring in February](#). The biggest increase was observed in northern Rakhine, while a 20 percent increase in the price of vegetable oil was recorded in Yangon. Fuel prices increased at least 20 percent across the country, which has an important knock-on effect on food prices.
- Demonstrations and the general strike throughout Myanmar are likely to exacerbate the socio-economic impact of COVID-19 lockdown measures, which saw 80 percent of households lose income.

## WFP Response

- In February, WFP assisted over half a million people in Myanmar with cash-based transfers and in-kind food assistance, through four activities: **Emergency Relief Assistance; Nutrition** (stunting prevention and support to persons living with HIV and tuberculosis (TB) patients); **School Feeding**; and **Livelihood Support**.

### Emergency Relief Assistance

- WFP's highest priority is to maintain its monthly life-saving assistance to internally displaced people and other vulnerable populations who fully rely on it.
- In February, WFP provided life-saving food and cash assistance to 349,200 people in conflict-affected states of southern Chin, Kachin, Rakhine and northern Shan.
- In view of current banking challenges or potential constrained market supply, WFP is building a contingency food stock, which would allow it to provide in-kind food assistance if needed.

### Nutrition

- WFP provided a comprehensive package of nutrition support for 80,300 children aged 6-59 months and pregnant and lactating women and girls; as well as some 1,350 people living with HIV and TB patients.
- Continuing WFP nutrition interventions is critical to avoid short- and long-term public health crises, on top of the pandemic.

## School Feeding

- In February (last cycle for the 2020/2021 academic year), WFP assisted 213,100 schoolchildren with take-home rations of nutritious high-energy biscuits or cash.
- To keep schoolchildren healthy and alleviate the financial burden on their families, WFP plans to continue the delivery of take-home rations while schools remain closed.
- In parallel, WFP works with partners towards a safe reopening of schools in Wa Self-Administered Division.

## Livelihood Support

- WFP delivered conditional cash or food assistance, coupled with health and nutrition education, to 43,800 people in exchange for building or rehabilitating community assets.

## Common Services Support

### WFP Humanitarian Flights

- In the first quarter of 2021, WFP humanitarian flights completed ten rotations connecting Yangon and Kuala Lumpur, transporting more than 400 passengers.

### Logistics Coordination

- WFP works closely with logistics partners to strengthen existing in-country coordination mechanisms to address logistics gaps and challenges encountered by partners.

## WFP commitment to stay and deliver

- Despite multiple challenges ahead, WFP remains committed to supporting the people of Myanmar. Building on its strong field presence and extensive partnership network, WFP also stands ready to respond to additional humanitarian needs.
- WFP closely coordinates its response with humanitarian and development partners in Myanmar, and provides common services to partners based on their priorities.
- WFP is closely monitoring the dynamic situation on the ground, including food and nutrition security situation, market price, supply chain, and banking services, especially in the peri-urban areas of Yangon.
- WFP continues to advocate for safe and uninterrupted access to all populations in need.

## Resourcing Update

- WFP requires US\$ 40 million to keep operations running at current levels through September 2021.

*WFP thanks all donors for their support to the CSP (2018-2022): Australia, Canada, Denmark, the European Union, Germany, Italy, Israel, Japan, Republic of Korea, Livelihoods and Food Security Fund, Luxembourg, Myanmar Humanitarian Fund, the Netherlands, New Zealand, Norway, Poland, private donors (including Japan Association for WFP), Russian Federation, Sweden, Switzerland, Thailand, Timor-Leste, Republic of Turkey, United Kingdom, United Nations Central Emergency Response Fund, United States of America.*