

# Central Cardamom Protected Forest Conservation Program

Forestry Administration/Conservation International

Ouk Kimsan

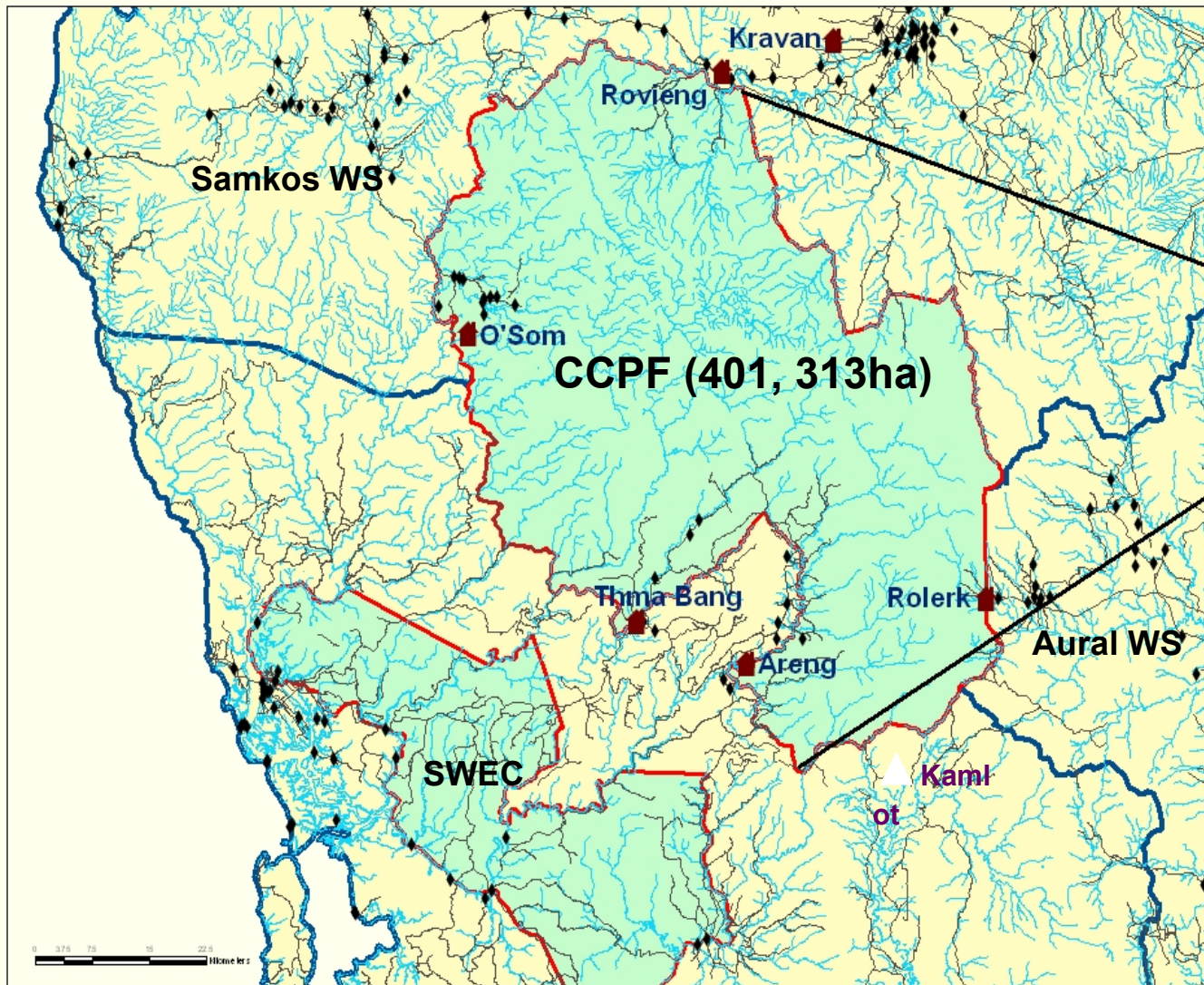
20<sup>th</sup> Nov. 07



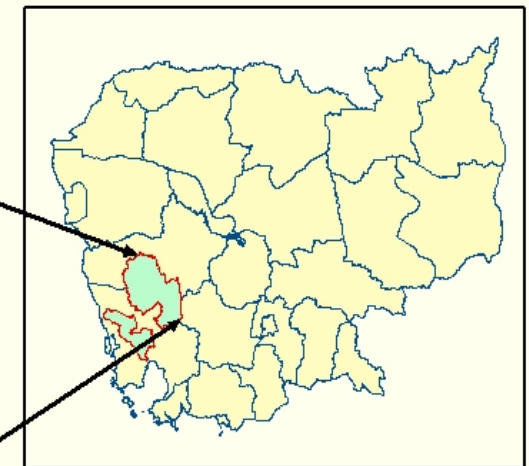


# Central Cardamom Protected Forest (CCPF)

## Map Of CCPF



## Cambodia\_Map



## Legend

- ◆ villages
- Road
- Rivers
- protected\_areas
- Land



0 40,000 80,000 120,000 160,000 200,000 240,000 280,000 320,000 360,000 Kilometers



# CCPF Geophysical Attributes

- Monsoon- six months dry and six months wet
- High rainfall, up to 3000mm per annum
- Steep-slide mountain plateau
  - CCPF, elevation 800-1300m
  - Cardamom range, elevation 200-1300m
- Temperatures between 25-30°C at low attitude and about 20°C at high attitude (above about 1000m)
- Mesozoic sandstone- rhyodacite and basalt; and small pocket of gemstone along valley and stream such as rubies, sapphires and zircons.
- Rich of natural hydrology- Areng, Tatai, Atai, Russei Chrum and so on.





# Biological features

	No. of Species	New records for Cards.	No. of GT Spp
Mammals	58	11	13
Birds	93	3	2
Reptiles	55	9	7
Amphib.	29	7	1
Fish	43	33	1





# History of CCPF

**2000 FFI/FA surveys**

**2001 on-the-ground  
management**

**MAFF-FA Program, CI  
support**

**July 2002 Prime  
Ministerial Decree**



# Threats to CCPPF

- Land mine, malaria and disease effected
- Poverty issue and conflicts of interest in and around CCPPF
- Immigration and land speculation → land grabbing, hunting and logging
- Weak of juridical system
- Bandits and crime offenders have gun
- Some local armforces involve in forest crimes
- Lack of human resource and budget
- Hydro-power development





# Institutional issues

- Poor communication between relevant conservation and involved institutions
- Weakness of legal system
- Low capacity of enforcement officers
- Management system for protection of CCPF is not yet well set up
- Lack of regulations, declaration and legal papers to support CCPF management.



# Project strategies



## MISSION

Maintain & enhance  
conservation values

Conduct research

Support livelihoods  
and reduce poverty

Cooperative  
management



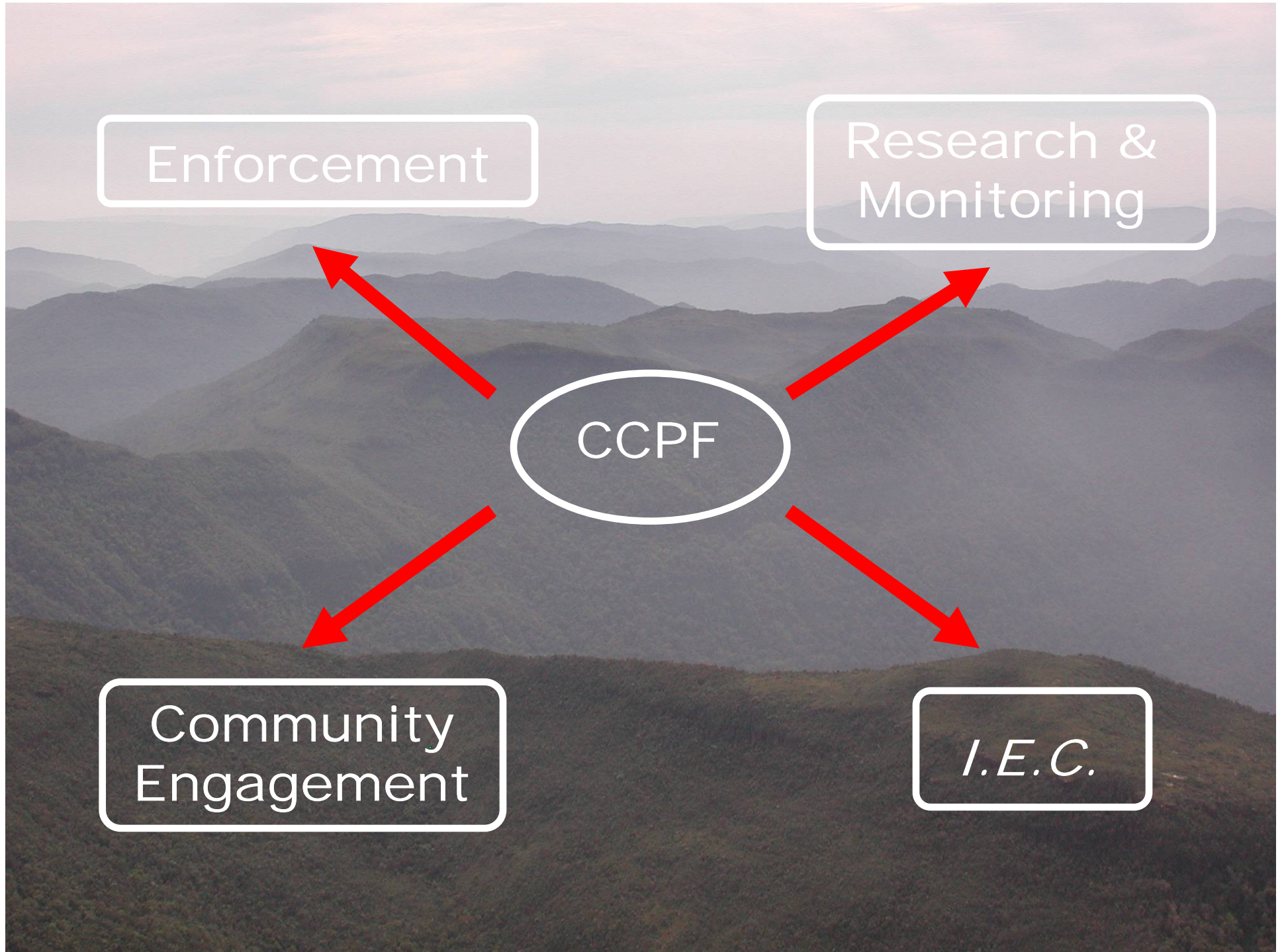
Enforcement

Research &  
Monitoring

CCPF

Community  
Engagement

*I.E.C.*





# Law Enforcement



## STAFF

FA Manager

13 FA Rangers

39 MP Rangers

4 Demobilized  
Military

12 local Rangers



# Ranger & Patrol system

## Rangers

- 2 teams of LE ranger in each station, team A and team B
- Each team consists of 6 people (FA, MPs and villagers)

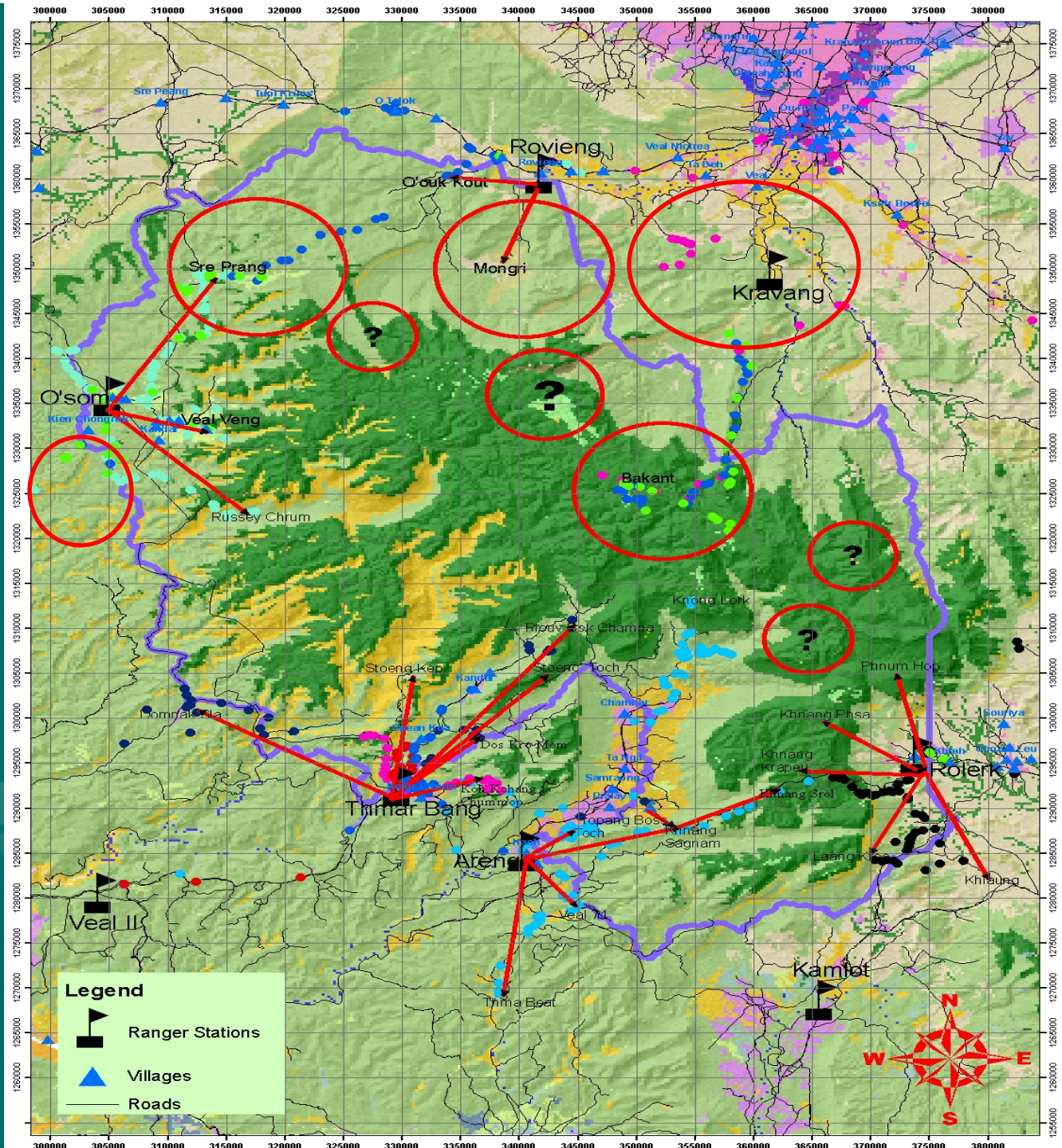
## Patrols

- Long-range patrol (up to 7days/trip, by foot mainly)
- Daily patrol and public work (road block, meeting with local authority, public awareness, checking crimes around villages)
- Patrol rotation (between team A and B)





# Ranger patrol route and sites of forestry crimes taken action by LE rangers



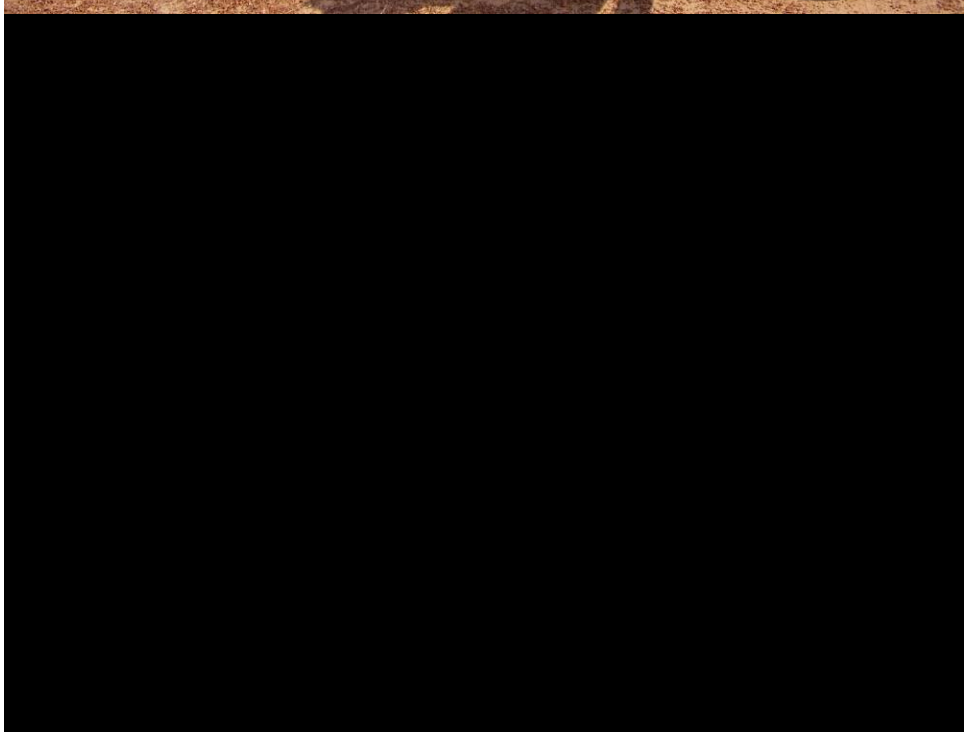


























## Community Engagement



## WHY?

People impact biodiversity and therefore locals need to be supporters of conservation

## HOW?

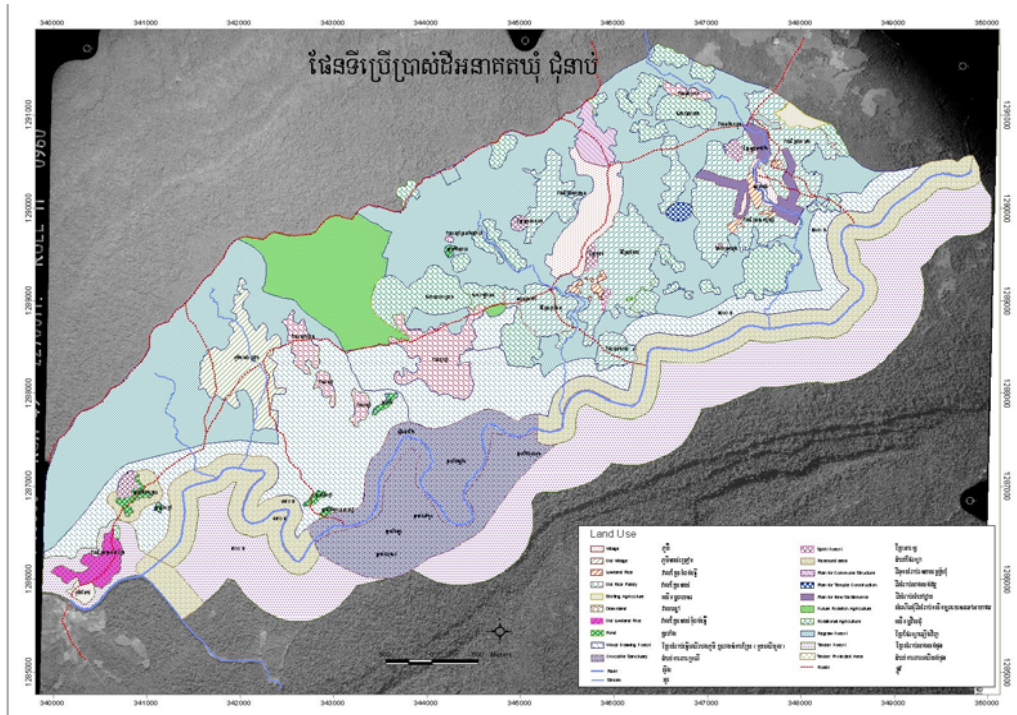
Enabling conditions

Education

Conservation Stewardship

Integration





# ENABLING CONDITIONS

Health Post  
(maternal,  
family planning,  
and general)

Land use planning

Livelihood activities





EDUCATION

Teachers

Story books

Posters

T-shirts

Film production

Kouprey Express

**\*\* Scaling up**



# Conservation Stewardship Project

- Signing conservation agreement with local community for species and forest protection







# INTEGRATION

District Govt.

Commune Councils

CNRMC

Community rangers

Villagers



# Research and Monitoring

Applied  
research to  
increase  
knowledge and  
strengthen  
decision-  
making

Government, CI,  
students, local  
community







# PROJECTS

Turtles and  
tortoises

Bears

Dragon fish

Otters

PA monitoring



# Information Education and Communication

- Informing local communities of the links between themselves, their well-being and the condition of the environment in which they live.
- Providing information on wildlife and forestry regulations and laws.
- Publicizing the work of the program to other organizations, government authorities and donors.
- Communicating the importance of the CCPF and the work of the program to a global audience.



# Project achievements

## Law Enforcement

- Establishing 7 ranger stations surrounding CC PF
- Integrated enforcement with local participation
- Turning hunters to be forest and wildlife protectors
- Protecting wildlife and forest and ecosystem in whole CC PF
- Permanent forest state demarcation in Thma Bang district
- Conducting public awareness on forestry law and others
- Effective patrol system established
- Significantly reducing forestry crimes, illegal logging, hunting, snaring, land grabbing, Yellow wine and Mreas Prov production, wildlife trade...so on



# Project achievements

## Community Engagement

- Completed PLUP in 5 communes @ Thmor Bang
- Set up Community Natural Resource Management Committees at 5 communes
- Provided one Health Care Centre and Clean Water Well at TB
- Supported local school teachers and provided fund for building two schools
- Restored of abandoned paddy fields of locals.
- Set up buffalo bank
- Set up CNRMC in 5 communes
- Set up community ranger and build up their capacity
- Removed thousand snares and traps in CCPF → reduced wildlife threats
- Several species of wildlife have been increased.



# Project achievements

## Research and Monitoring

- Publishing scientific papers of biological research at CCPF
- Supporting and helping university and graduate students.
- Setting monitoring team consisting of FA, local soldier, villagers.
- Setting up transect line for biodiversity monitoring
- Building local experts on species research



# Project achievements

## Information Education and Communication

- The Cardamoms: Cambodia's Last Wilderness Film
- Participatory photography
- Cambodia Environment Film Festival - 2007
- Buddhism, education and conservation
- Media relations



# Future vision and likely trends

- Continuing to build and upgrade ranger stations
- Continuing to provide skill and knowledge to LE rangers through class and field training
- Strengthening legal work to improve effective law enforcement
- Continuing to conduct law awareness
- Continuing forest demarcation in other places in CCPF
- Improving patrol system
- Strengthening good relationship with local people and authorities through formal meeting and discussion
- Improving communication with other relevant institutions
- Expending CSP to other conservation areas
- Developing Eco-tourism project
- Finding endowment fund for long-term conservation and management of CCPF





*Thank you very much for  
your attention*

